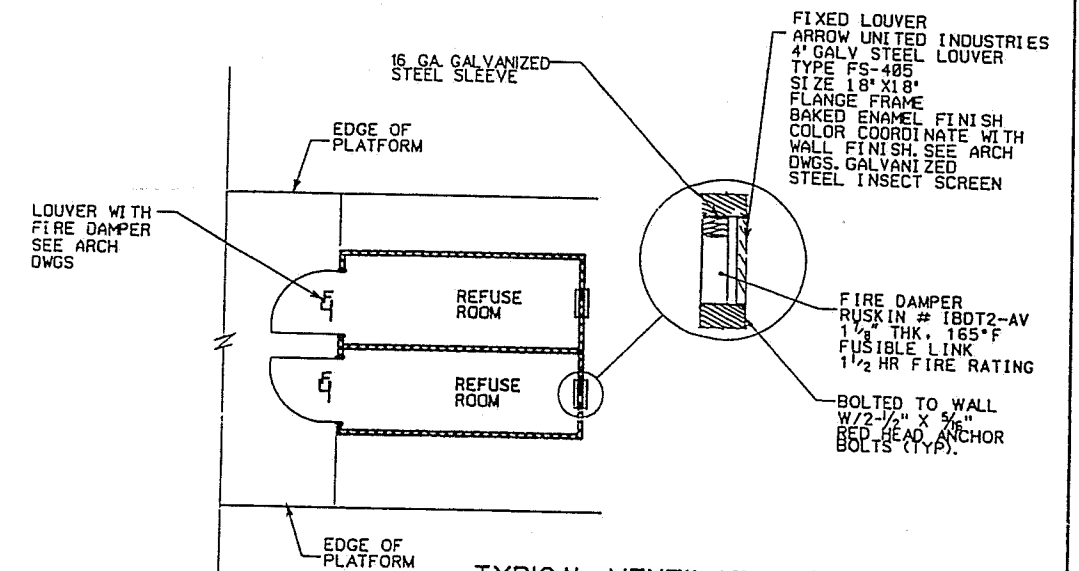
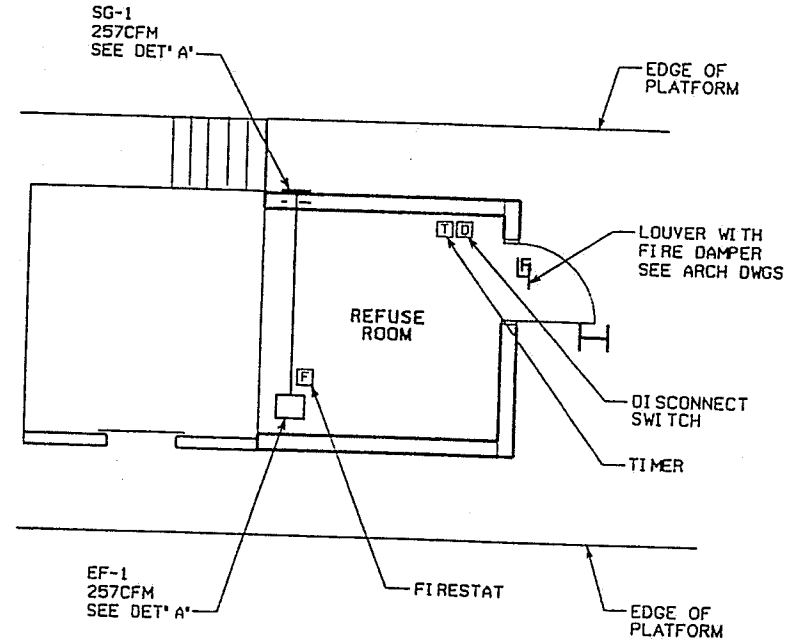


**NOTES**

- 1.1 EACH REFUSE ROOM IS TO BE PROVIDED WITH AN APPROPRIATE VENTILATION SYSTEM AS DESCRIBED HEREIN FOR EITHER A) SUBWAY STATION LOCATIONS B) ELEVATED STATION LOCATIONS.
- 1.2 ALL DRAWINGS ARE DIAGRAMMATIC. CONTRACTOR SHALL CHECK AND VERIFY ALL DIMENSIONS AND JOB CONDITIONS IN THE FIELD. HE SHALL NOTIFY THE DESIGNER OF ANY DISCREPANCIES PRIOR TO SUBMITTING SHOP DRAWINGS OR PLACING ORDERS FOR EQUIPMENT DURING THE COURSE OF THE CONTRACT.
- 1.3 CONTRACTOR SHALL PERFORM ALL CUTTING AND PATCHING OF THE EXISTING STRUCTURE AS REQUIRED. CONTRACTOR IS TO NOTIFY NYCT OF ANY DISCREPANCIES BEFORE PROCEEDING WITH THAT PORTION OF THE WORK. FAILURE TO NOTIFY NYCT WILL NOT RELIEVE THE CONTRACTOR OF RESPONSIBILITY TO PERFORM THE WORK INTENDED BY THE CONTRACT DOCUMENTS. THE CONTRACTOR IS TO CORRECT ANY AND ALL WORK ARISING FROM SUCH FAILURE TO COORDINATE DISCREPANCIES TO THE SATISFACTION OF NYCT.
- 1.4 ALL WORK SHALL BE PERFORMED IN A WORKMANLIKE MANNER EXECUTED IN ACCORDANCE WITH THE BEST ACCEPTED TRADES PRACTICES.
- 1.5 THE CONTRACTOR IS TO PROTECT AND PRESERVE ALL EXISTING ITEMS TO REMAIN AND IS TO REPAIR OR REPLACE ANY ITEM DAMAGED DURING THE COURSE OF WORK TO THE SATISFACTION AND APPROVAL OF NYCT WITHOUT ANY ADDITIONAL COST TO NYCT.
- 1.6 ALL SURFACES DAMAGED IN THE COURSE OF THE WORK SHALL BE RESTORED TO THEIR ORIGINAL CONDITION.
- 1.7 EQUIPMENT SCHEDULES DO NOT CONSTITUTE A COMPLETE IDENTIFICATION OF THE EQUIPMENT. REFER TO ALL DRAWINGS.
- 1.8 ALL EQUIPMENT SHALL BE INSTALLED AND ADJUSTED IN ACCORDANCE WITH THE MANUFACTURER'S RECOMMENDATIONS.
- 1.9 ALL EQUIPMENT SHALL BE ARRANGED TO PERMIT EASY ACCESS FOR MAINTENANCE.
- 1.10 ALL BRACKETS, PLATES, CHANNELS, ETC. SHALL BE GALVANIZED, UNLESS OTHERWISE SPECIFIED.



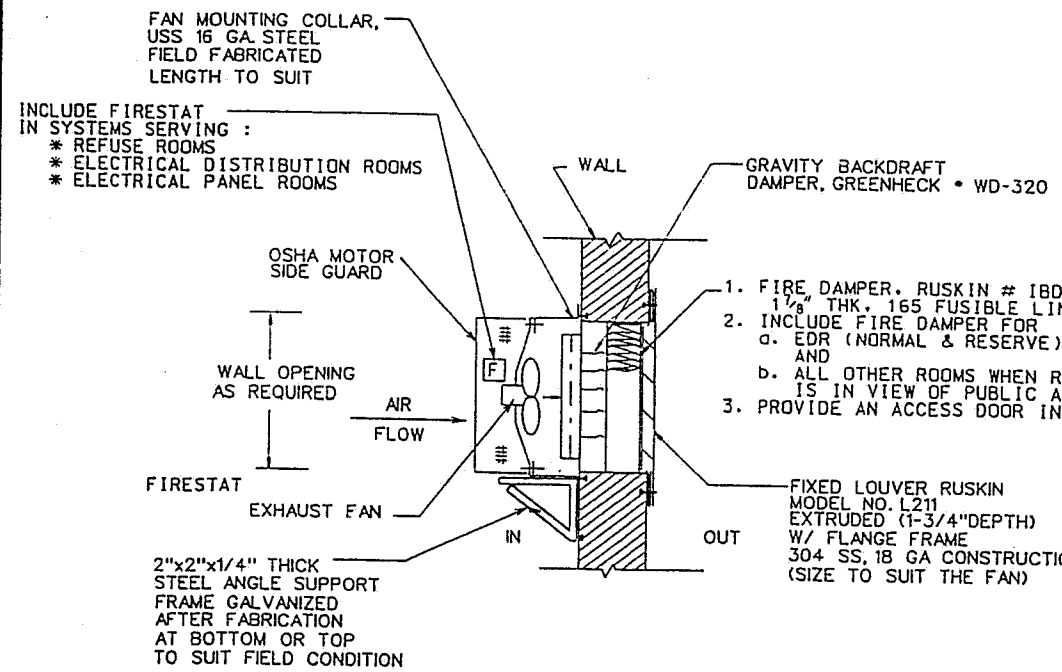
1. CONTRACTOR TO LOCATE FAN/EQUIPMENT IN EACH SUBWAY REFUSE ROOM USING ABOVE AS A MODEL.
2. GENERAL- LOCATE FAN IN WALL THAT IS MOST REMOTE FROM ENTRANCE TO ROOM.
  - LOCATE DISCONNECT SWITCH AND TIMER AT A MINIMUM HEIGHT OF 4'-6\"/>

EXHAUST FAN SCHEDULE										
DESIGNATION	ROOM SERVED	FAN LOCATION	CAPACITY			MOTOR DATA		GREENHECK MODEL NO.	CONTROL	ACCESSORIES
			CFM	S.P.(IN.)	WATTS	RPM	VOLT/PHASE			
EF-1	REFUSE	REFUSE ROOM (NORTHBOUND PLATFORM)	257	.25	81	1050	115/1	SP-226	1, 2	A, B

AIR DEVICE SCHEDULE			
DESIGNATION	DEVICE	KRUEGER MODEL NO.	REMARKS
SG-1	SECURITY GRILLE (12\"/>		

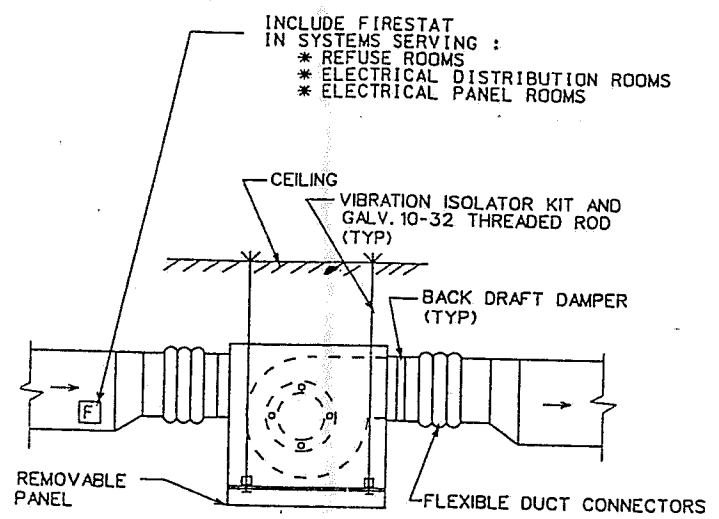
- FAN CONTROL EQUIPMENT & METHODS:**
1. TIMER MODEL : EAGLE SIGNAL CONTROLS, DA2018A301, 120 VAC ADJUSTABLE
  2. FIRESTAT MODEL : HONEYWELL: L4029E1052, SET AT T=145°F
- ACCESSORIES:**
- A. HANGING VIBRATION ISOLATORS
  - B. BACKDRAFT DAMPER

REVISION	DESCRIPTION	DATE	APPROVED
 New York City Transit OFFICE OF STATION DESIGN MECHANICAL ENGINEERING		<b>VENTILATION - REFUSE ROOM</b>	
DRAWN BY			DATE MARCH 3, 2003
DESIGNED BY			DRAWING NO.
CHECKED BY			PROJECT ENGINEER
APPROVED BY			PRINCIPAL ENGINEER

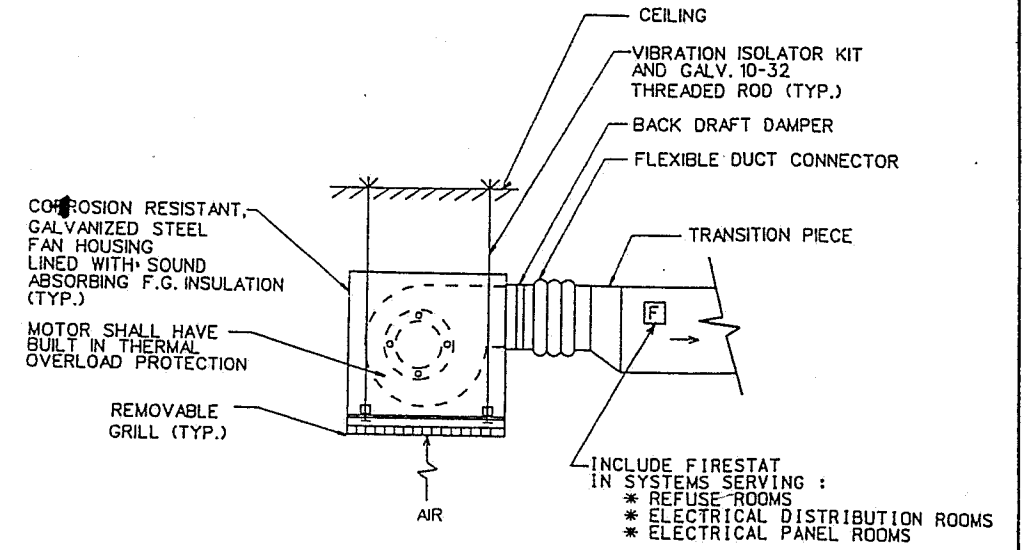


**DETAIL - A**  
**SIDE WALL EXHAUST FAN**

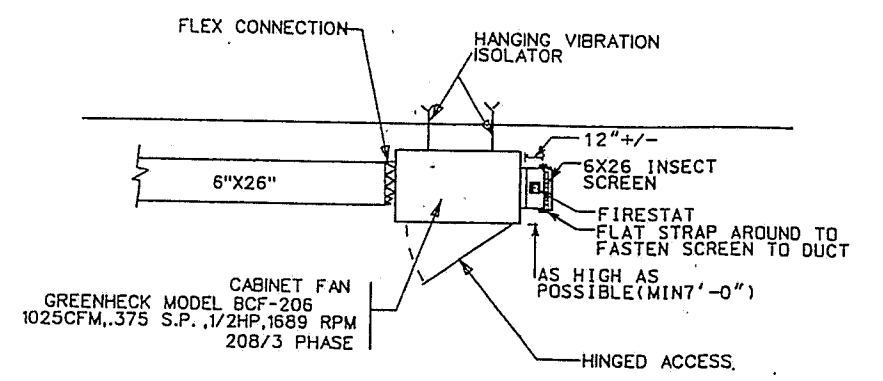
**DESIGNER NOTE :**  
DETAIL - A APPLIES TO UNDERGROUND LOCATIONS NOT VISIBLE TO PUBLIC



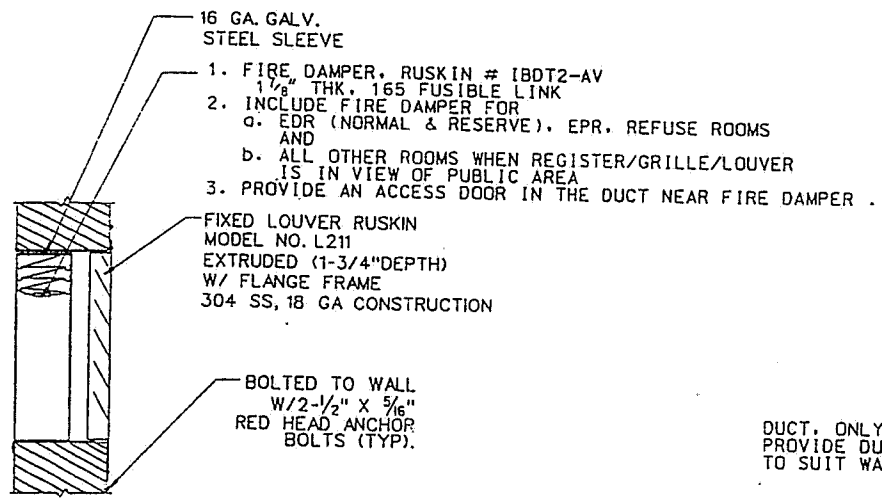
**DETAIL-B**  
**EXHAUST FAN**



**DETAIL-C**  
**EXHAUST FAN**

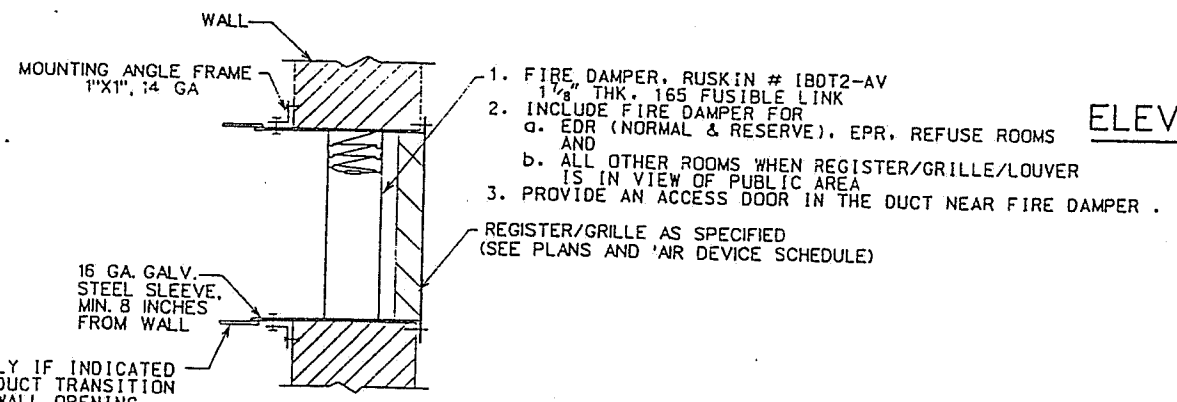


**DETAIL-F**  
**ELEVATOR MACHINE ROOM EXHAUST FAN**




**DETAIL-D**  
**EXHAUST/INTAKE LOUVER**

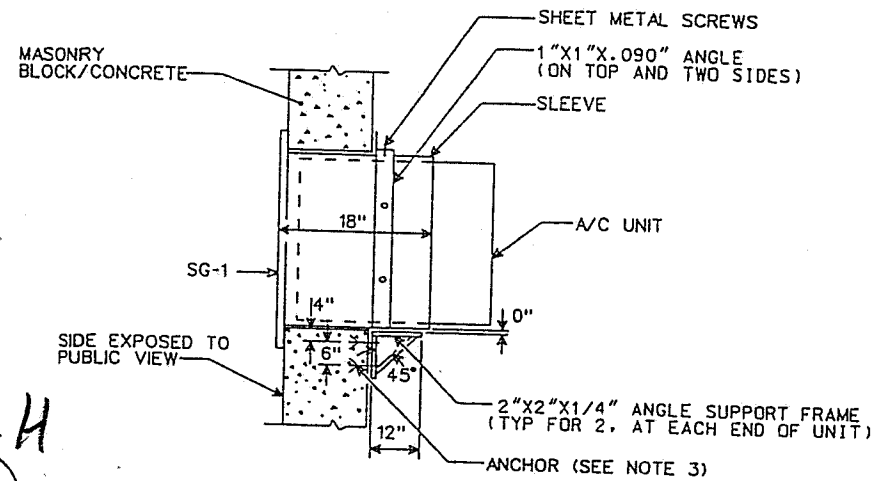
**DESIGNER NOTE :**  
DETAIL D & DETAIL E APPLIES TO UNDERGROUND LOCATIONS. EMPLOY 6\"/>



**DETAIL-E**  
**EXHAUST/INTAKE REGISTER/GRILLE**

**NOTES:**  
1. WHERE WALL IS FINISHED WITH TILE, TOP OF GRILLE TO BE AT THAT ELEVATION TO ALLOW A MINIMUM OF ONE FULL TILE TO BE EXPOSED BENEATH BOTTOM OF MOSAIC OR TILE BAND.  
2. IN LOCATIONS WITH NEITHER MOSAIC NOR TILE BAND, ELEVATION SHALL BE SIMILARLY ESTABLISHED.

REVISION	DESCRIPTION	DATE	APPROVED
 <b>New York City Transit</b> OFFICE OF STATION DESIGN <b>MECHANICAL ENGINEERING</b>			
<b>VENTILATION DETAILS</b>			
DRAWN BY			DATE MARCH 3, 2003
DESIGNED BY			DRAWING NO.
CHECKED BY		PROJECT ENGINEER	
APPROVED BY		PRINCIPAL ENGINEER	REVISION

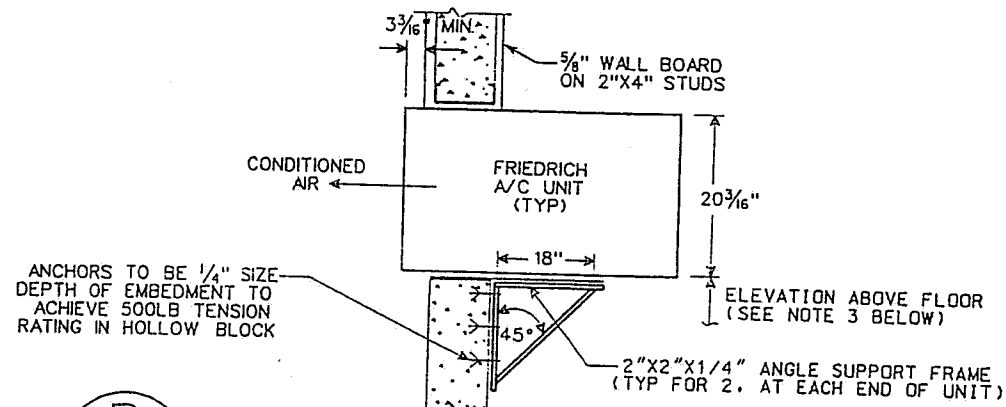


(TYP) THRU WALL A/C UNIT INSTALLATION

N.T.S.

NOTES:

1. SG-1 KRUEGER 1350, DUCT SIZE-16<sup>5</sup>/<sub>8</sub>"X25" WIDE SLEEVE LENGTH-18" ANGLE FRAME 1"x1"x.090" SHIPPED LOOSE WHITE FINISH 0" DEFLECTION
2. A/C UNIT- ISLANDAIRE EZ12E9ATA1A1PXX 12,000 BTU GROSS (NO SUBSTITUTE)
3. ANCHORS TO BE 1/4" SIZE DEPTH OF EMBEDMENT TO ACHIEVE 500LB TENSION RATING IN HOLLOW BLOCK

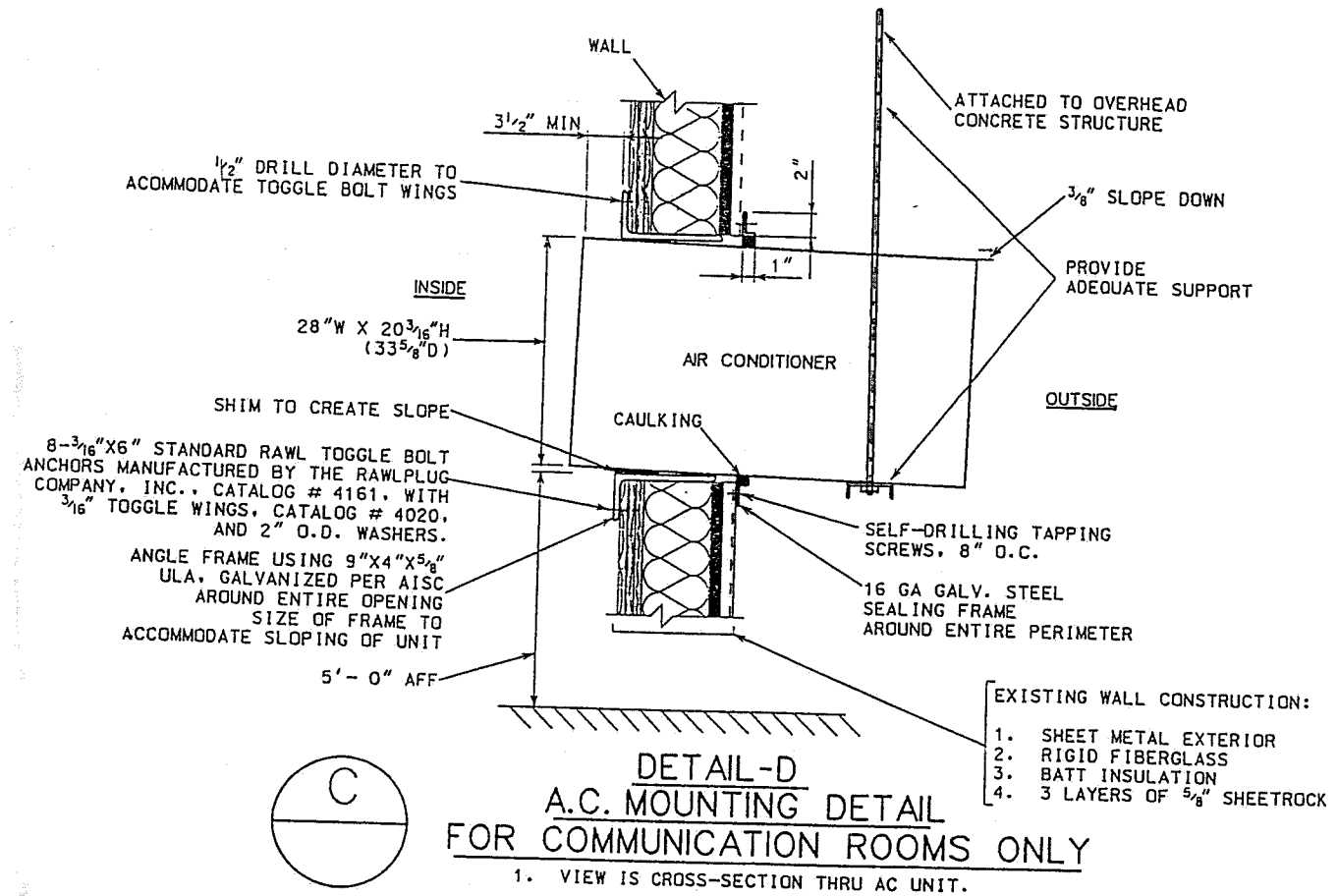


SUPPORT OF FRIEDRICH A/C UNITS

NOTES:

N.T.S.


1. DETAIL APPLIES TO UNITS AC-1, 2, 4.
2. ACCESS TO VENT STRUCTURE IS REQUIRED TO INSTALL SUPPORT FOR UNITS AC-1 & 2. (REMOVE & RESTORE STREET GRATING & CONCRETE)
3. MOUNTING HEIGHT FOR AC-1 & 2 - 7'-9" AC-4 - 5'-1"
4. ATTACH SLEEVE ASSEMBLY OF UNIT TO SUPPORT FRAME.



DETAIL-D  
A.C. MOUNTING DETAIL  
FOR COMMUNICATION ROOMS ONLY

1. VIEW IS CROSS-SECTION THRU AC UNIT.

- EXISTING WALL CONSTRUCTION:
1. SHEET METAL EXTERIOR
  2. RIGID FIBERGLASS
  3. BATT INSULATION
  4. 3 LAYERS OF 5/8" SHEETROCK

REVISION	DESCRIPTION	DATE	APPROVED
 <b>New York City Transit</b> OFFICE OF STATION DESIGN MECHANICAL ENGINEERING			
VENTILATION DETAILS -2			
DRAWN BY			DATE MARCH 3, 2003
DESIGNED BY			DRAWING NO.
CHECKED BY		PROJECT ENGINEER	
APPROVED BY		PRINCIPAL ENGINEER	REVISION