

THE EAST END GATEWAY & LIRR CONOURSE PROJECT



East End Gateway



LIRR Concourse Project

ABOUT THE PROJECT

MTA Construction & Development is continuing to transform Penn Station. Phase I of the LIRR Concourse Project, completed in December 2020, includes the iconic new East End Gateway entrance at 33rd Street & 7th Avenue. Phase II, now underway, is reclaiming underutilized space to widen the 33rd Street Corridor from 30 to 57 feet and raise the ceiling height to 18 feet.

In addition to adding more space, the Project is improving the station environment. New mechanical systems will allow for better air circulation and an expanded volume of fresh air. Natural light introduced by the new East End Gateway entrance is being complemented by a modern luminous ceiling in the LIRR Entry Hall, with programmable color-changing LED lights. To enhance the accessibility of Penn Station, the Project includes a new elevator entrance, replacement of four elevators, new elevator communication systems, and intuitive wayfinding.

The spacious new LIRR Concourse will provide a more comfortable station experience for the hundreds of thousands of daily Penn Station users. The Project will be complete in early 2023.


Visit Us Online

<https://new.mta.info/project/lirr-concourse-east-end-gateway>

PROJECT BENEFITS


- **Widen 33rd Street Corridor** from 30 to 57 feet
- **Raise ceiling height to 18 feet** across the entire concourse
- **Provide better lighting and intuitive wayfinding**
- **Upgrade air circulation** and expand volume of fresh air
- **Improve station access and elevator reliability**
- **Enhance retail and dining options**

FAST FACTS:

 **2X**
WIDER CORRIDORS
IN LIRR CONOURSE

 **18**
FOOT TALL CEILINGS
IN LIRR CONOURSE

 **22K**
SQUARE FEET IN
LIRR ENTRY HALL

 **9.5K**
SQUARE FEET OF
LUMINOUS CEILING

 **105K**
CUBIC FEET OF
FRESH AIR

 **3**
NEW ESCALATORS

 **1**
NEW ELEVATOR
ENTRANCE

 **4**
ELEVATOR
REPLACEMENTS

THE EAST END GATEWAY & LIRR CONOURSE PROJECT



2020

December 31, 2020
Grand opening of the
East End Gateway entrance

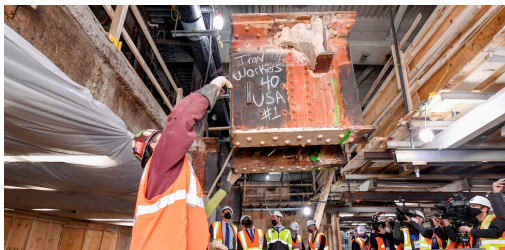


2021

Q1 - Q4 2021
Right-sizing sewer
boxes & relocation of
street-level utilities



Q4 2021 - Q1 2022
Construction of new
station structure at a
higher elevation

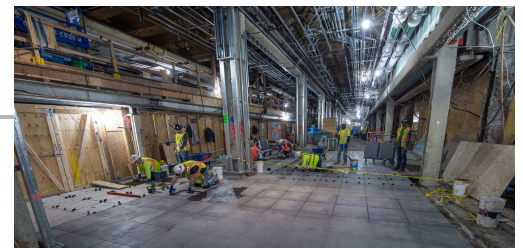


2022

Q1 2022
Successful removal
of original 6' 8" beams
known as headknockers



Q2 - Q3 2022
Installation of new
mechanical systems &
architectural finishes



Q3 2022
Public reveal of the
new ceiling height,
corridor width & station
finishes



2023

Q1 2023
Substantial project
completion

