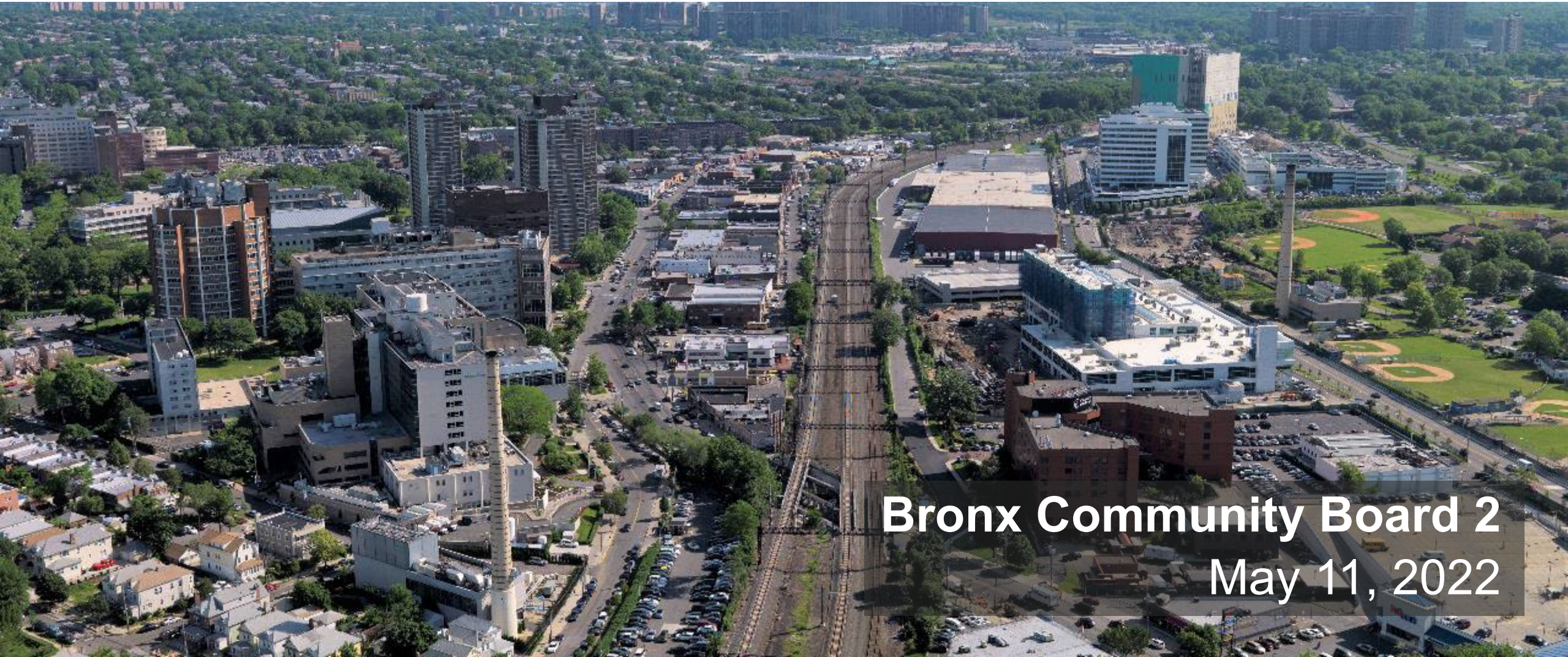




# Penn Station Access



**Metropolitan Transportation Authority**  
Construction & Development  
Metro-North Railroad



**Bronx Community Board 2**  
May 11, 2022





# What is Penn Station Access?

- Provide new Metro-North rail service to and from Penn Station
- Bring Amtrak's existing Hell Gate Line into a state of good repair, improving reliability, and on-time performance for intercity rail
- Construct four new ADA-accessible stations in the East Bronx, which is an underserved area
- Transform our regional transportation system by improving reliability, reducing travel time, and expanding mass transit options
- Bolster equity and regional connectivity by delivering a new transit option



# Penn Station Access Project Location



New Rochelle Station

THE BRONX

To New Haven

Co-op City Station

Morris Park Station

Parkchester / Van Nest Station

Hunts Point Station

MANHATTAN

Penn Station

QUEENS



# Key Elements

THE  
BRONX

Hudson River

New Rochelle AC Substation

New Rochelle Yard

Pelham Lane Bridge

Bronx Interlocking

Pelham Bay Bridge

Pelham Bay Interlocking

Co-Op City Station

Co-Op City AC Substation

Morris Park Station

Hell Gate Line New Track

Eastchester Road Bridge

Bronxdale Avenue Bridge

Van Nest AC Substation

Tremont Interlocking

Parkchester/Van Nest Station

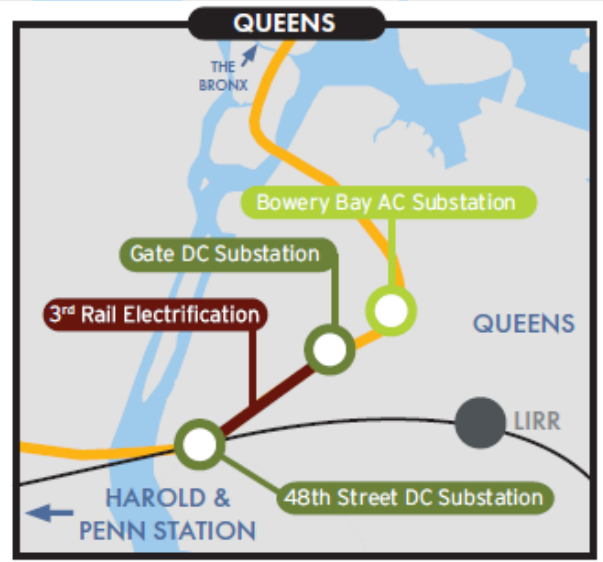
Bronx River Bridge

Hunts Point Station

Young Interlocking

Leggett Interlocking

Oak AC Substation



# Project Benefits



## Decreased Travel Times

Improves access to underserved neighborhoods and gets you to your destination faster



## Reverse Commuting Opportunities

Attracts new talent and broadens the job market



## Economic Vitality

Supports the local and regional economy



## Optimizing Existing Infrastructure

Delivers cost-effective transit solutions



## Bridging Communities

Connects you to several neighborhoods in the Bronx and throughout the region



## Regional Transportation Connectivity

Expands your travel opportunities



## Sustainability

Encourages drivers to switch to train travel, reducing traffic congestion and improving air quality



## Enhanced Network Reliability

Provides flexibility for Metro-North and improves on-time performance for intercity passengers

# Project Status



On December 29, 2021, MTA awarded the Design-Build contract to the joint venture of Halmar International, LLC and RailWorks.



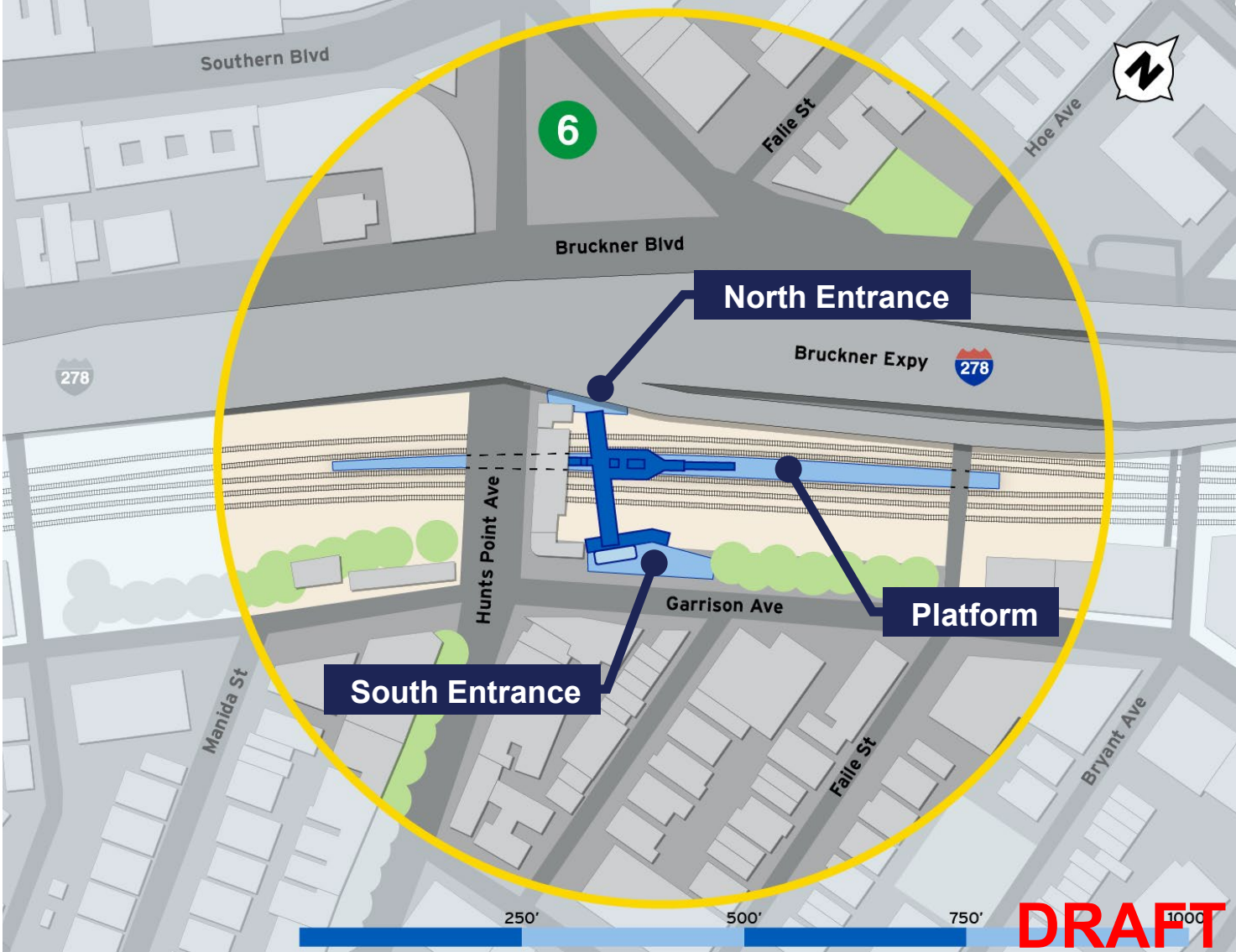
Notice to Proceed issued on January 3, 2022



The anticipated completion date for the Penn Station Access Project is 2027.

# Hunts Point Station Conceptual Site Plan

*(subject to change)*



# What to Expect in 2022

- Development of detailed design packages
- Site surveys, subsurface investigations, utility identification etc. for design progression
- Procurement of long lead items
- Geotech borings at bridges, stations, and substations
- Site mobilization, laydown areas, field trailers
- Clearing, utility relocations, access roads
- Retaining walls, OCS foundations, site grading
- Early work to focus on area of Hunts Point and Leggett Interlocking

*Hunts Point and Parkchester station construction anticipated to begin in 2023*



# Project Timeline *(subject to change)*

★ Substantial Completion

2022

2023

2024

2025

2026

2027

2028



# Construction Related Inquiries



Telephone Hotline: 347-263-7837



Email: [PSAOutreach@mtacd.org](mailto:PSAOutreach@mtacd.org)



Project Webpage: <https://new.mta.info/project/penn-station-access>



Sign-up for future updates: <https://pennstationaccess.info/contact-us>



An aerial photograph of a city, likely New York City, showing a dense urban landscape with numerous buildings, streets, and a large body of water in the background. A prominent white rectangular box with a thin black border is centered over the image, containing the text "Thank You!" in a large, white, sans-serif font. The background image is slightly blurred to make the text stand out.

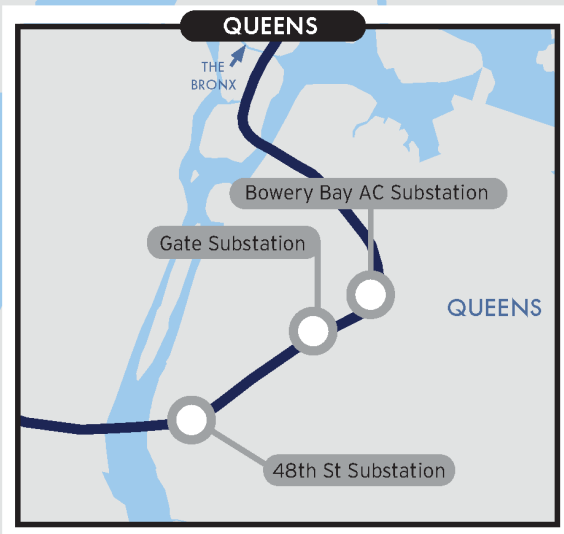
Thank You!

**NEXT SECTION: MAP  
TIMELINE**



2022

# THE BRONX



**LEGEND**

- Not Started
- In Progress
- Completed

\*All dates subject to change

2023

THE BRONX

Hudson River

New Rochelle AC Substation

Pelham Lane Bridge

To New Haven

Pelham Bay Bridge

Co-Op City Station

Co-Op City AC Substation

Morris Park Station

Eastchester Road Bridge

Bronxdale Avenue Bridge

Van Nest AC Substation

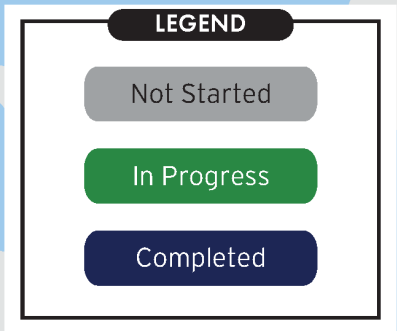
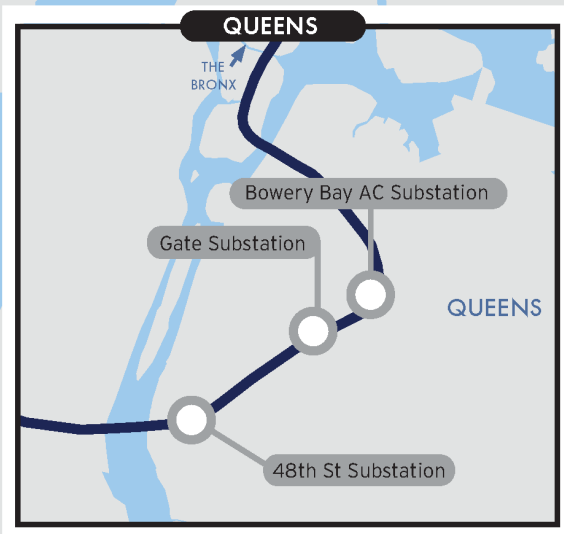
Parkchester/Van Nest Station

Bronx River Bridge

Hunts Point Station

Leggett Interlocking

Oak AC Substation



\*All dates subject to change



2024

THE BRONX

Hudson River

New Rochelle AC Substation

Pelham Lane Bridge

To New Haven

Pelham Bay Bridge

Co-Op City Station

Co-Op City AC Substation

Morris Park Station

Eastchester Road Bridge

Van Nest AC Substation

Bronxdale Avenue Bridge

Parkchester/Van Nest Station

Bronx River Bridge

Hunts Point Station

Leggett Interlocking

Oak AC Substation

LEGEND

Not Started

In Progress

Completed

QUEENS

THE BRONX

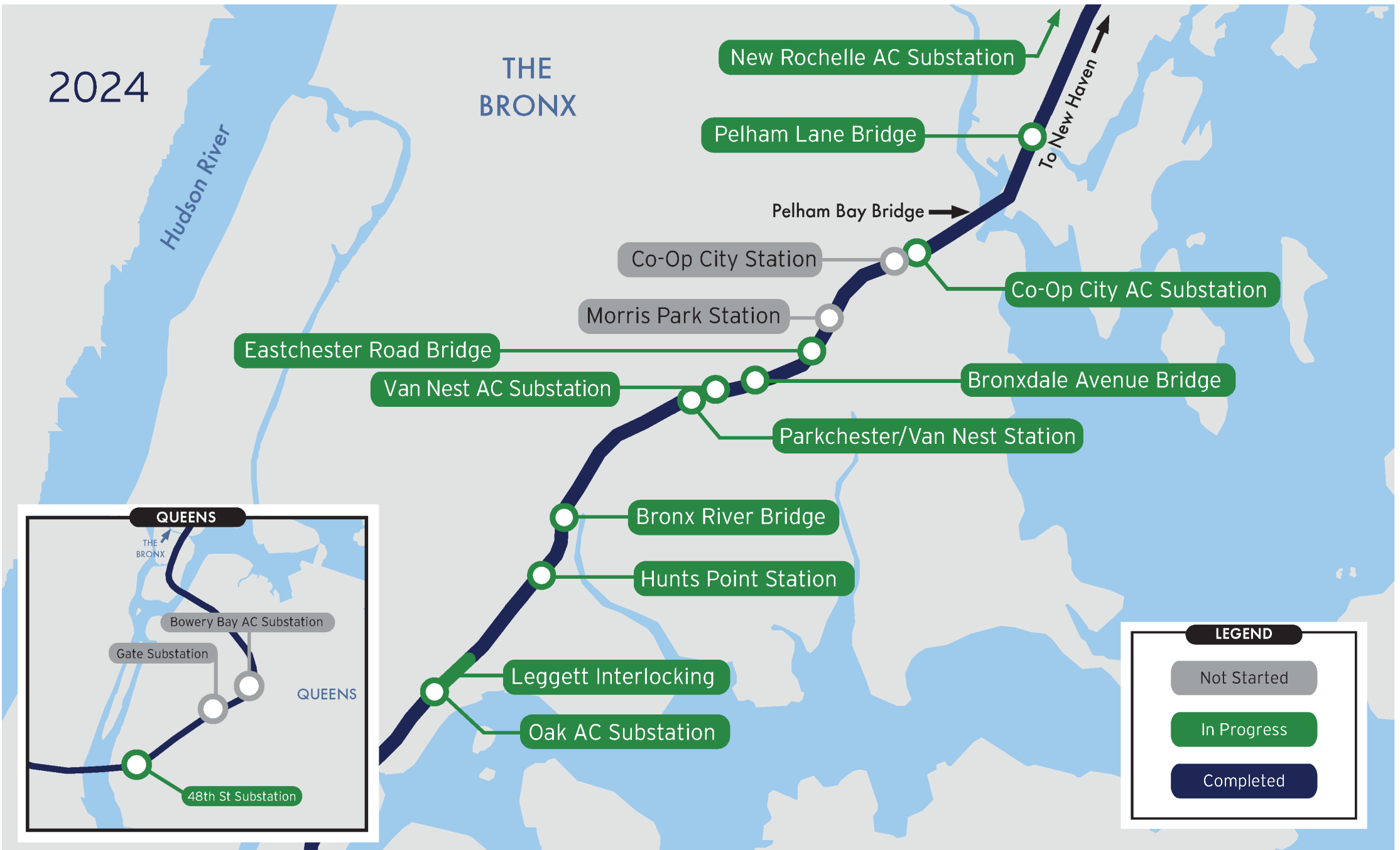
Bowery Bay AC Substation

Gate Substation

QUEENS

48th St Substation

\*All dates subject to change



2025

THE BRONX

Hudson River

New Rochelle AC Substation

Pelham Lane Bridge

To New Haven

Pelham Bay Bridge

Co-Op City Station

Co-Op City AC Substation

Morris Park Station

Eastchester Road Bridge

Bronxdale Avenue Bridge

Van Nest AC Substation

Parkchester/Van Nest Station

Bronx River Bridge

Hunts Point Station

Leggett Interlocking

Oak AC Substation

LEGEND

Not Started

In Progress

Completed

QUEENS

THE BRONX

Bowery Bay AC Substation

Gate Substation

QUEENS

48th St Substation

\*All dates subject to change





2026

THE BRONX

Hudson River

New Rochelle AC Substation

Pelham Lane Bridge

To New Haven

Pelham Bay Bridge

Co-Op City Station

Co-Op City AC Substation

Morris Park Station

Eastchester Road Bridge

Bronxdale Avenue Bridge

Van Nest AC Substation

Parkchester/Van Nest Station

Bronx River Bridge

Hunts Point Station

Leggett Interlocking

Oak AC Substation

**LEGEND**

- Not Started
- In Progress
- Completed

**QUEENS**

THE BRONX

Bowery Bay AC Substation

Gate Substation

QUEENS

48th St Substation

\*All dates subject to change

2027

THE BRONX

Hudson River

New Rochelle AC Substation

Pelham Lane Bridge

To New Haven

Pelham Bay Bridge

Co-Op City Station

Co-Op City AC Substation

Morris Park Station

Eastchester Road Bridge

Bronxdale Avenue Bridge

Van Nest AC Substation

Parkchester/Van Nest Station

Bronx River Bridge

Hunts Point Station

Leggett Interlocking

Oak AC Substation

LEGEND

Not Started

In Progress

Completed

QUEENS

THE BRONX

Bowery Bay AC Substation

Gate Substation

QUEENS

48th St Substation

\*All dates subject to change

