



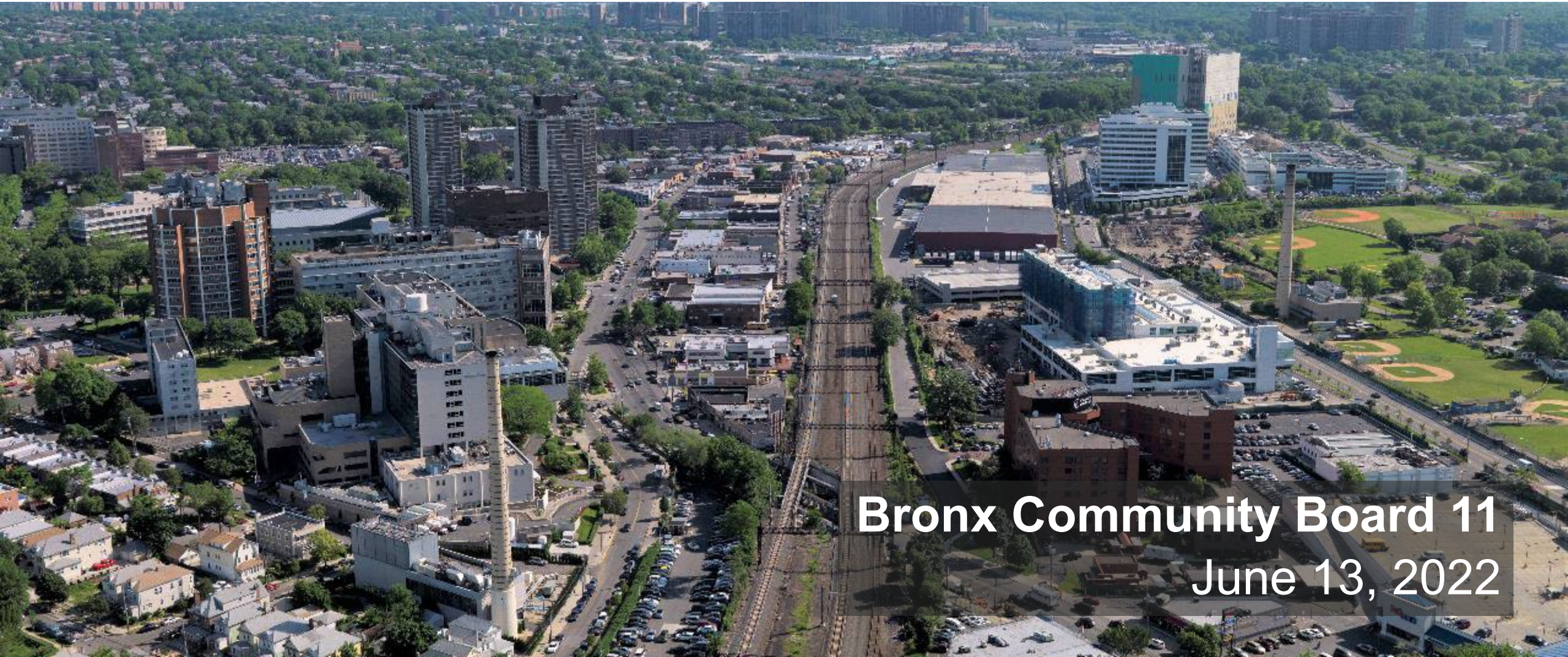
Penn Station Access



Metropolitan Transportation Authority

Construction & Development

Metro-North Railroad



Bronx Community Board 11

June 13, 2022



What is Penn Station Access?

- Provide new Metro-North rail service to and from Penn Station
- Bring Amtrak's existing Hell Gate Line into a state of good repair, improving reliability, and on-time performance for intercity rail
- Construct four new ADA-accessible stations in the East Bronx, which is an underserved area
- Transform our regional transportation system by improving reliability, reducing travel time, and expanding mass transit options
- Bolster equity and regional connectivity by delivering a new transit option

Penn Station Access Project Location



New Rochelle Station

THE BRONX

To New Haven

Co-op City Station

Morris Park Station

Parkchester / Van Nest Station

Hunts Point Station

MANHATTAN

Penn Station

QUEENS

Key Elements

THE
BRONX

Hudson River

New Rochelle AC Substation

New Rochelle Yard

Pelham Lane Bridge

Bronx Interlocking

Pelham Bay Bridge

Co-Op City Station

Pelham Bay Interlocking

Co-Op City AC Substation

Morris Park Station

Hell Gate Line New Track

Eastchester Road Bridge

Bronxdale Avenue Bridge

Van Nest AC Substation

Tremont Interlocking

Parkchester/Van Nest Station

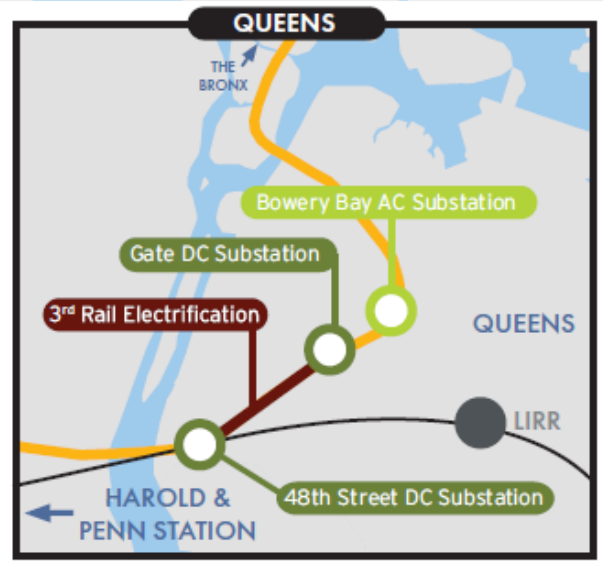
Bronx River Bridge

Hunts Point Station

Young Interlocking

Leggett Interlocking

Oak AC Substation



Project Benefits



Decreased Travel Times

Improves access to underserved neighborhoods and gets you to your destination faster



Reverse Commuting Opportunities

Attracts new talent and broadens the job market



Economic Vitality

Supports the local and regional economy



Optimizing Existing Infrastructure

Delivers cost-effective transit solutions



Bridging Communities

Connects you to several neighborhoods in the Bronx and throughout the region



Regional Transportation Connectivity

Expands your travel opportunities



Sustainability

Encourages drivers to switch to train travel, reducing traffic congestion and improving air quality



Enhanced Network Reliability

Provides flexibility for Metro-North and improves on-time performance for intercity passengers

Project Status



On December 29, 2021, MTA awarded the Design-Build contract to the joint venture of Halmar International, LLC and RailWorks.



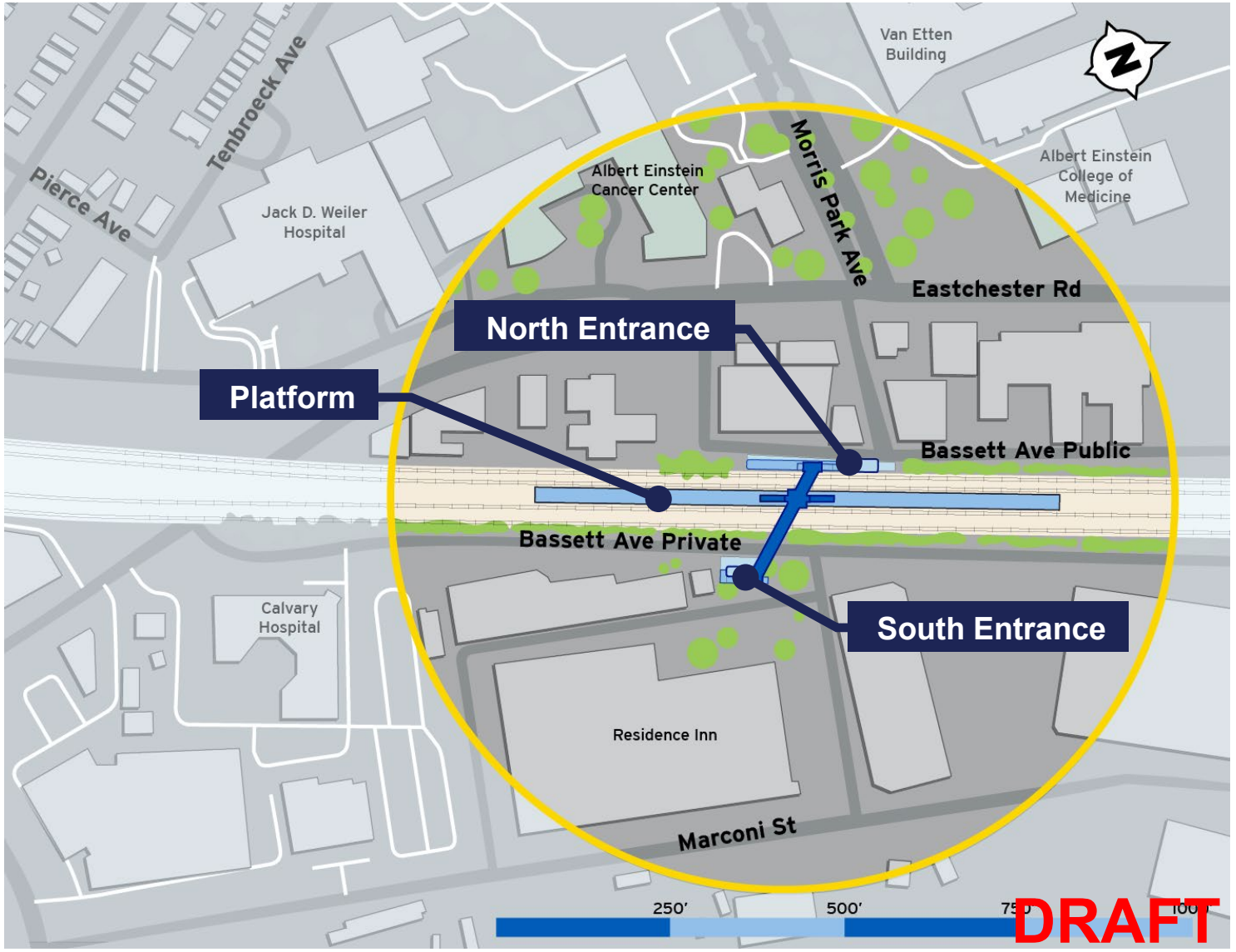
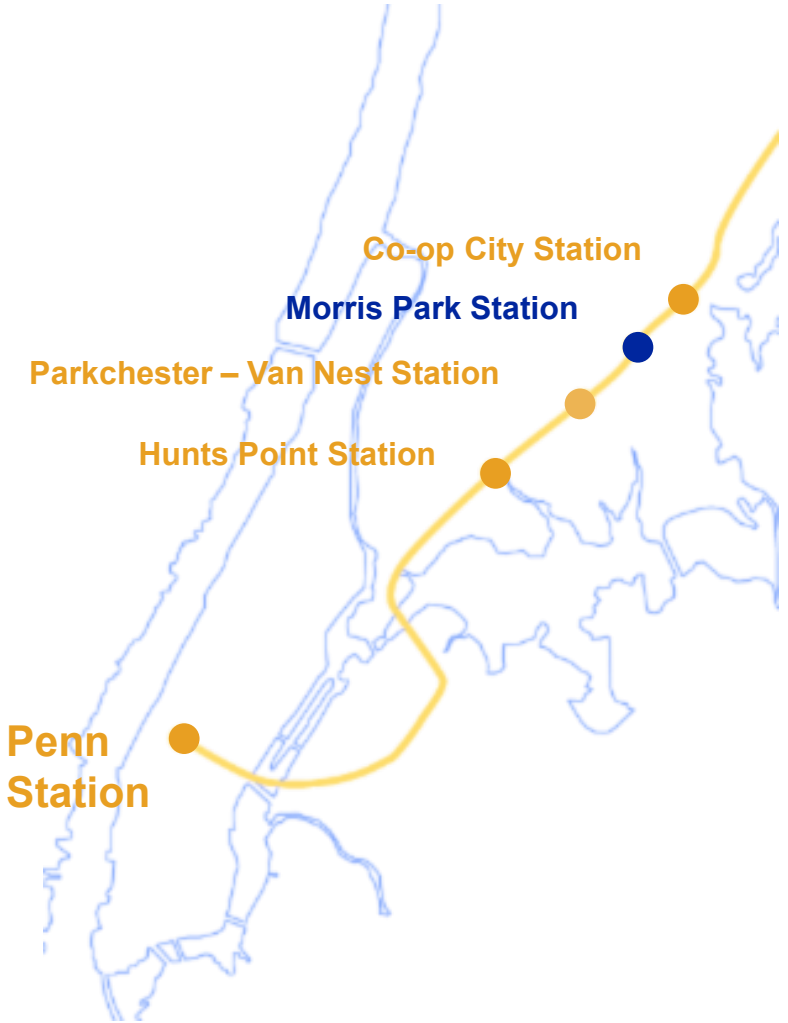
Notice to Proceed issued on January 3, 2022



The anticipated completion date for the Penn Station Access Project is 2027.

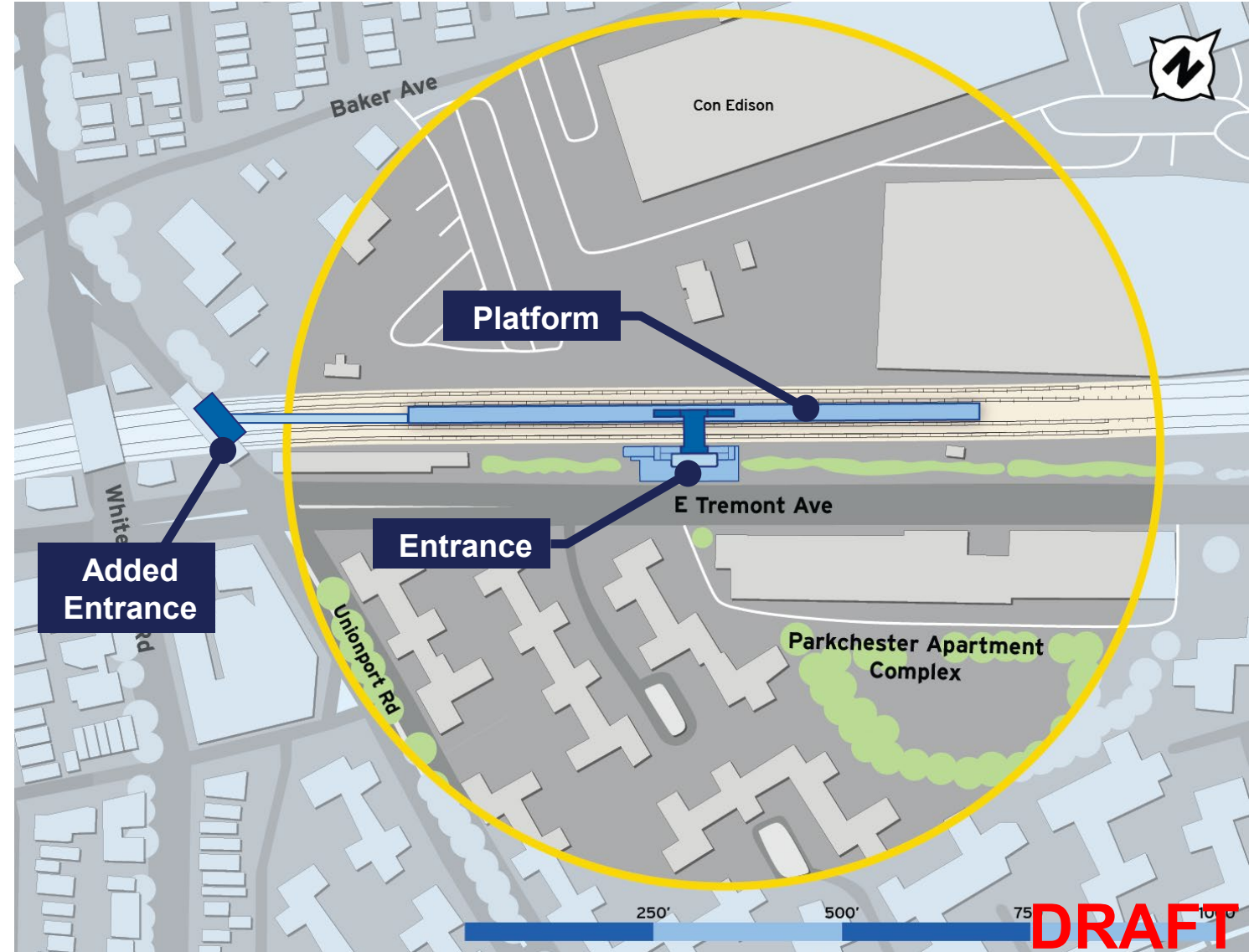
Morris Park Station Conceptual Site Plan

(subject to change)



Parkchester/Van Nest Station Conceptual Site Plan

(subject to change)



DRAFT

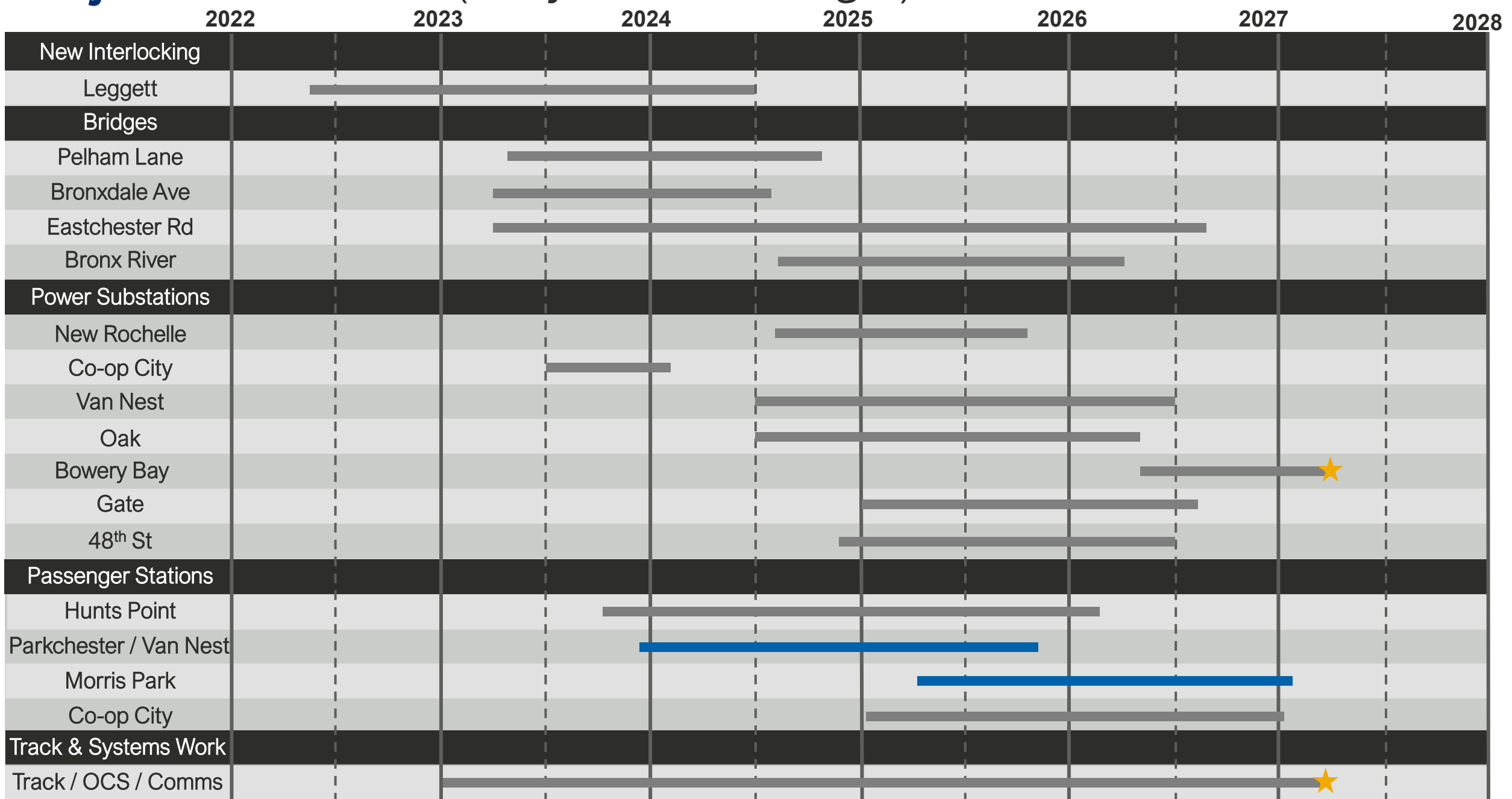
What to Expect in 2022

- Development of detailed design packages
- Site surveys, subsurface investigations, utility identification etc. for design progression
- Procurement of long lead items
- Geotech borings at bridges, stations, and substations
- Site Mobilization, Laydown areas, field trailers
- Clearing, utility relocations, access roads
- Retaining walls, OCS foundations, site grading
- Early work to focus on area of Hunts Point and Leggett Interlocking
- Public Hearing on Eminent Domain

Hunts Point and Parkchester station construction anticipated to begin in 2023

Project Timeline *(subject to change)*

★ Substantial Completion



MTA Job Information Event

June 7, 2022



Residence Inn New York the Bronx at Metro Center Atrium

Eminent Domain Hybrid Public Hearing

Date: Wednesday, June 22, 2022

Time: Begins at 6:00 P.M.

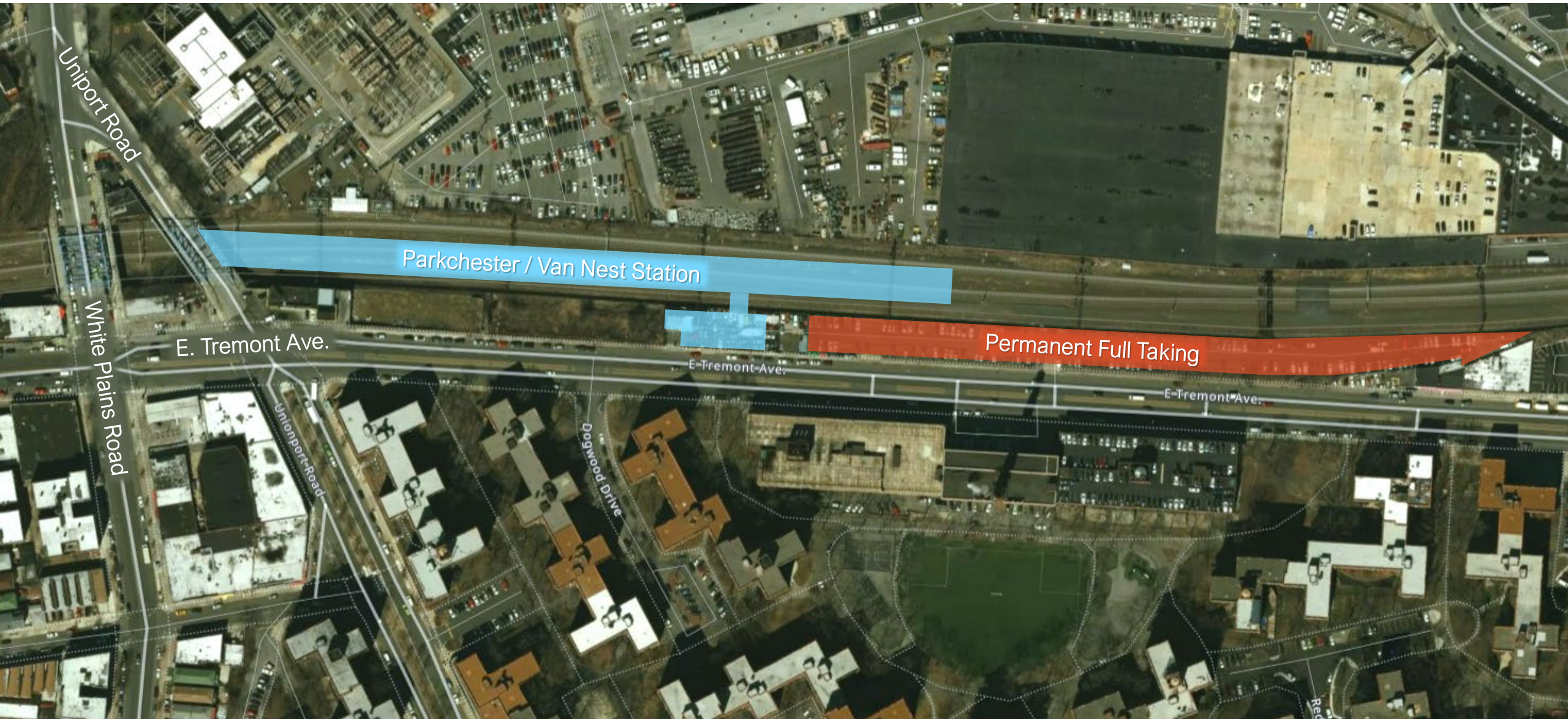
Place: Residence Inn New York the Bronx at Metro Center Atrium,
1776 Eastchester Road, Bronx, NY 10461

Virtual Options: Zoom Webinar

Speaker Registration: Registration closes at 6:30 P.M. on June 22, 2022

For full list of impacted properties, speaker registration, and Zoom information, visit: <https://new.mta.info/penn-access-hearing>

Parkchester-Tremont Parking Corp Easement



Parkchester / Van Nest Station

Permanent Full Taking

E. Tremont Ave.

E-Tremont-Ave.

E-Tremont-Ave.

Uniport Road

White Plains Road

Uniport Road

Dogwood Drive

Rec

Construction Related Inquiries



Telephone Hotline: 347-263-7837



Email: PSAOutreach@mtacd.org



Project Webpage: <https://new.mta.info/project/penn-station-access>



Sign-up for future updates: <https://pennstationaccess.info/contact-us>



Thank You!

**NEXT SECTION: MAP
TIMELINE**

2022

THE BRONX

Hudson River

New Rochelle AC Substation

Pelham Lane Bridge

To New Haven

Pelham Bay Bridge

Co-Op City Station

Co-Op City AC Substation

Morris Park Station

Eastchester Road Bridge

Van Nest AC Substation

Bronxdale Avenue Bridge

Parkchester/Van Nest Station

Bronx River Bridge

Hunts Point Station

Leggett Interlocking

Oak AC Substation

QUEENS

THE BRONX

Bowery Bay AC Substation

Gate Substation

QUEENS

48th St Substation

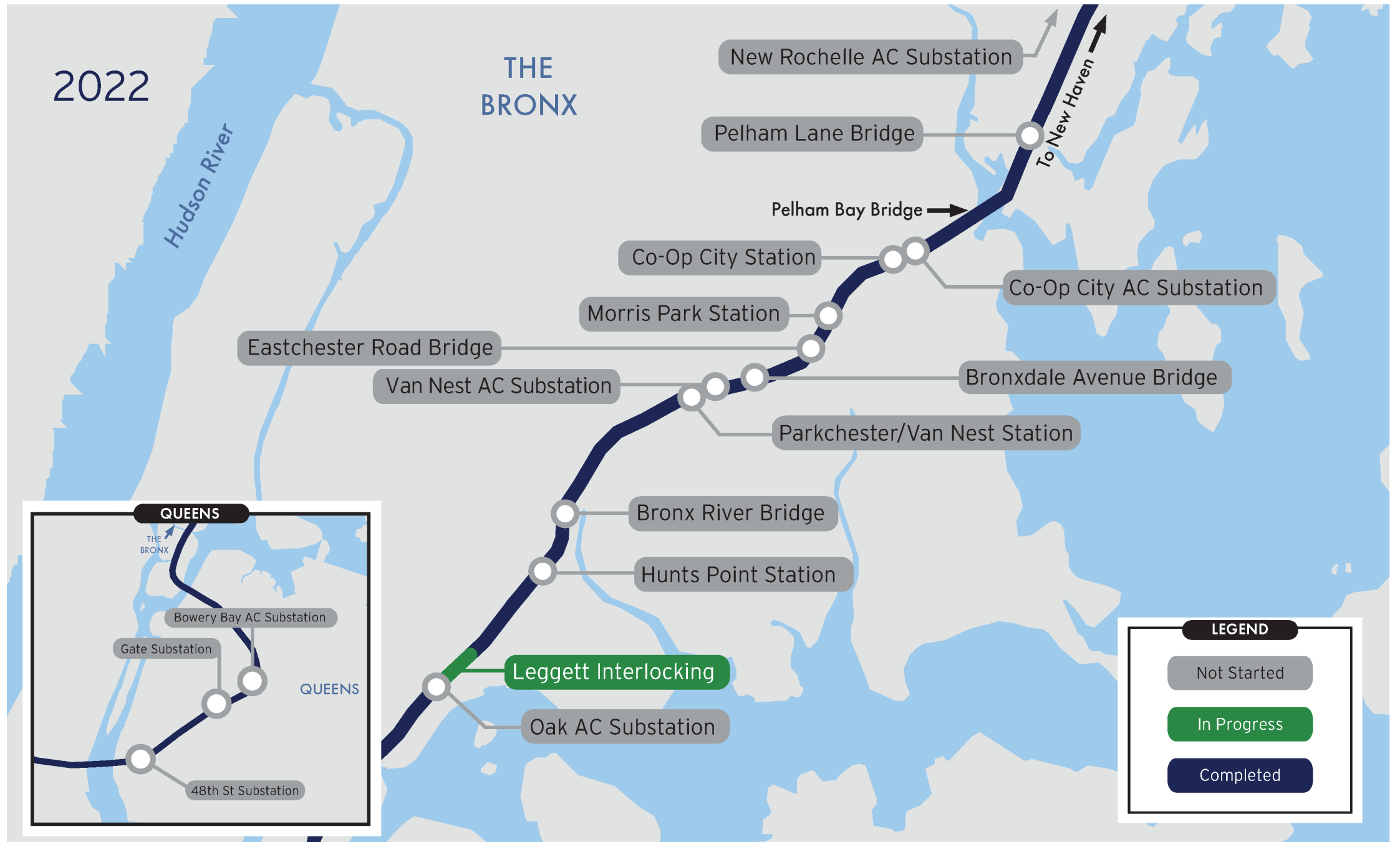
LEGEND

Not Started

In Progress

Completed

*All dates subject to change



2023

THE BRONX

Hudson River

New Rochelle AC Substation

Pelham Lane Bridge

To New Haven

Pelham Bay Bridge

Co-Op City Station

Co-Op City AC Substation

Morris Park Station

Eastchester Road Bridge

Bronxdale Avenue Bridge

Van Nest AC Substation

Parkchester/Van Nest Station

Bronx River Bridge

Hunts Point Station

Leggett Interlocking

Oak AC Substation

LEGEND

Not Started

In Progress

Completed

QUEENS

THE BRONX

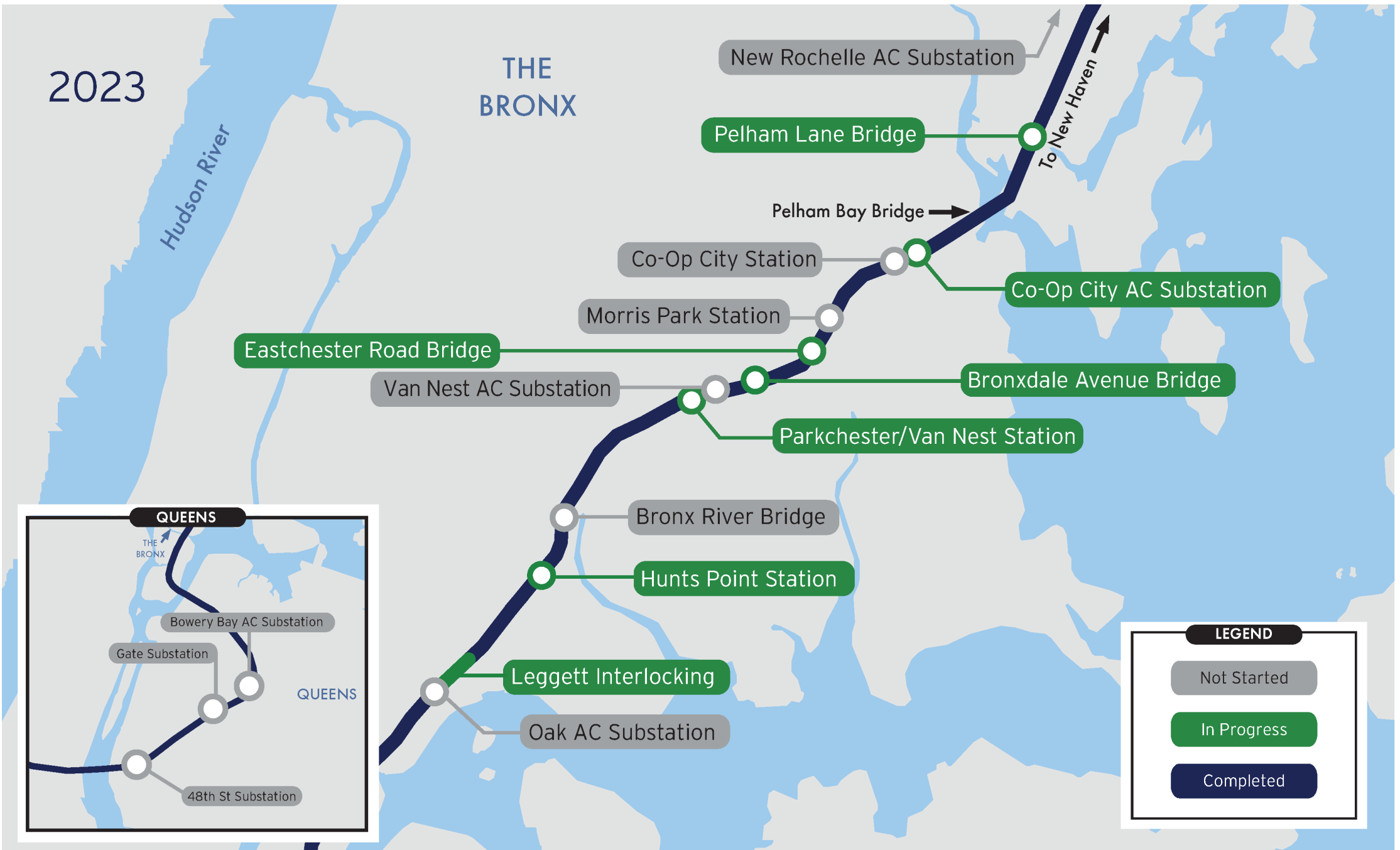
Bowery Bay AC Substation

Gate Substation

QUEENS

48th St Substation

*All dates subject to change



2024

THE BRONX

Hudson River

New Rochelle AC Substation

Pelham Lane Bridge

To New Haven

Pelham Bay Bridge

Co-Op City Station

Co-Op City AC Substation

Morris Park Station

Eastchester Road Bridge

Van Nest AC Substation

Bronxdale Avenue Bridge

Parkchester/Van Nest Station

Bronx River Bridge

Hunts Point Station

Leggett Interlocking

Oak AC Substation

QUEENS

THE BRONX

Bowery Bay AC Substation

Gate Substation

QUEENS

48th St Substation

LEGEND

Not Started

In Progress

Completed

*All dates subject to change



2025

THE BRONX

Hudson River

New Rochelle AC Substation

Pelham Lane Bridge

To New Haven

Pelham Bay Bridge

Co-Op City Station

Co-Op City AC Substation

Morris Park Station

Eastchester Road Bridge

Bronxdale Avenue Bridge

Van Nest AC Substation

Parkchester/Van Nest Station

Bronx River Bridge

Hunts Point Station

Leggett Interlocking

Oak AC Substation

LEGEND

- Not Started
- In Progress
- Completed



*All dates subject to change

2026

THE BRONX

Hudson River

New Rochelle AC Substation

Pelham Lane Bridge

To New Haven

Pelham Bay Bridge

Co-Op City Station

Co-Op City AC Substation

Morris Park Station

Eastchester Road Bridge

Bronxdale Avenue Bridge

Van Nest AC Substation

Parkchester/Van Nest Station

Bronx River Bridge

Hunts Point Station

Leggett Interlocking

Oak AC Substation

LEGEND

Not Started

In Progress

Completed

QUEENS

THE BRONX

Bowery Bay AC Substation

Gate Substation

QUEENS

48th St Substation

*All dates subject to change



2027

THE BRONX

Hudson River

To New Haven

New Rochelle AC Substation

Pelham Lane Bridge

Pelham Bay Bridge

Co-Op City Station

Co-Op City AC Substation

Morris Park Station

Eastchester Road Bridge

Bronxdale Avenue Bridge

Van Nest AC Substation

Parkchester/Van Nest Station

Bronx River Bridge

Hunts Point Station

Leggett Interlocking

Oak AC Substation

LEGEND

Not Started

In Progress

Completed

QUEENS

THE BRONX

Bowery Bay AC Substation

Gate Substation

QUEENS

48th St Substation

*All dates subject to change

