

1M sq. ft. NYC Development Opportunity Ideal for Last Mile Distribution

AVAILABLE: 550,000 sq. ft. of vacant land with
1,000,000 sq. ft. of development potential

LOCATION: Bronx, NYC

ACCESS: Direct to I-95 on/off ramps

ZONING: As of right industrial

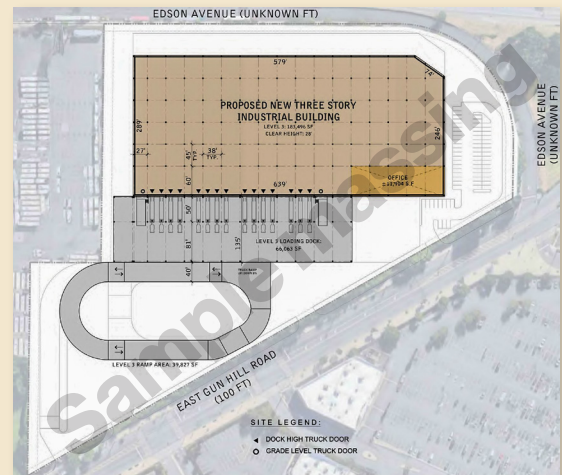
The MTA is offering a large parcel of land for industrial development.

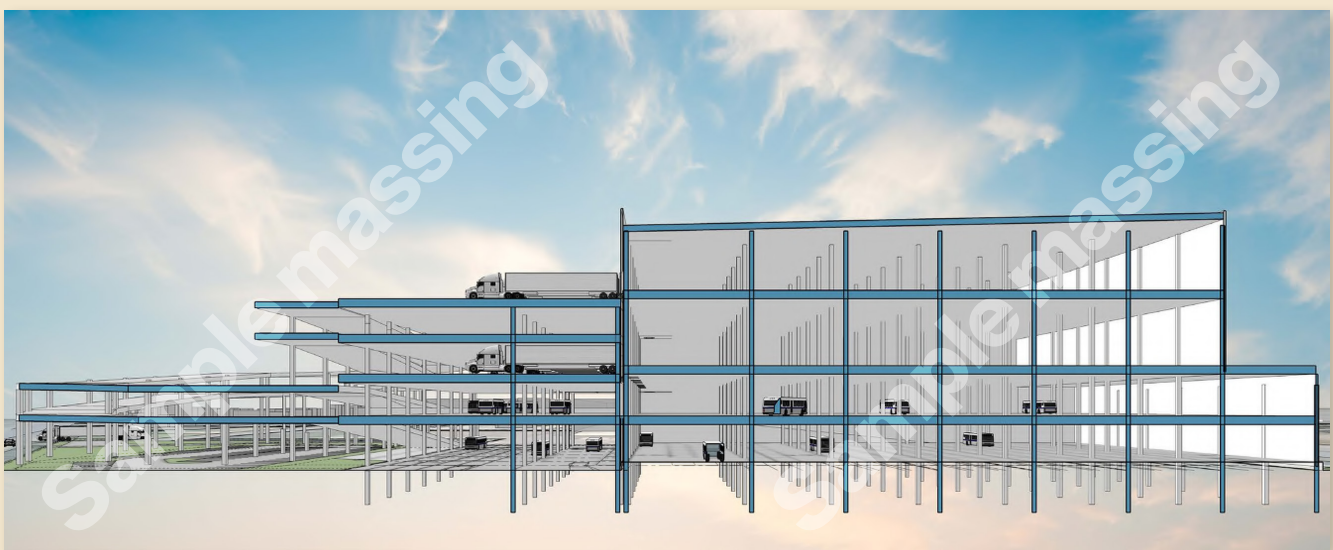
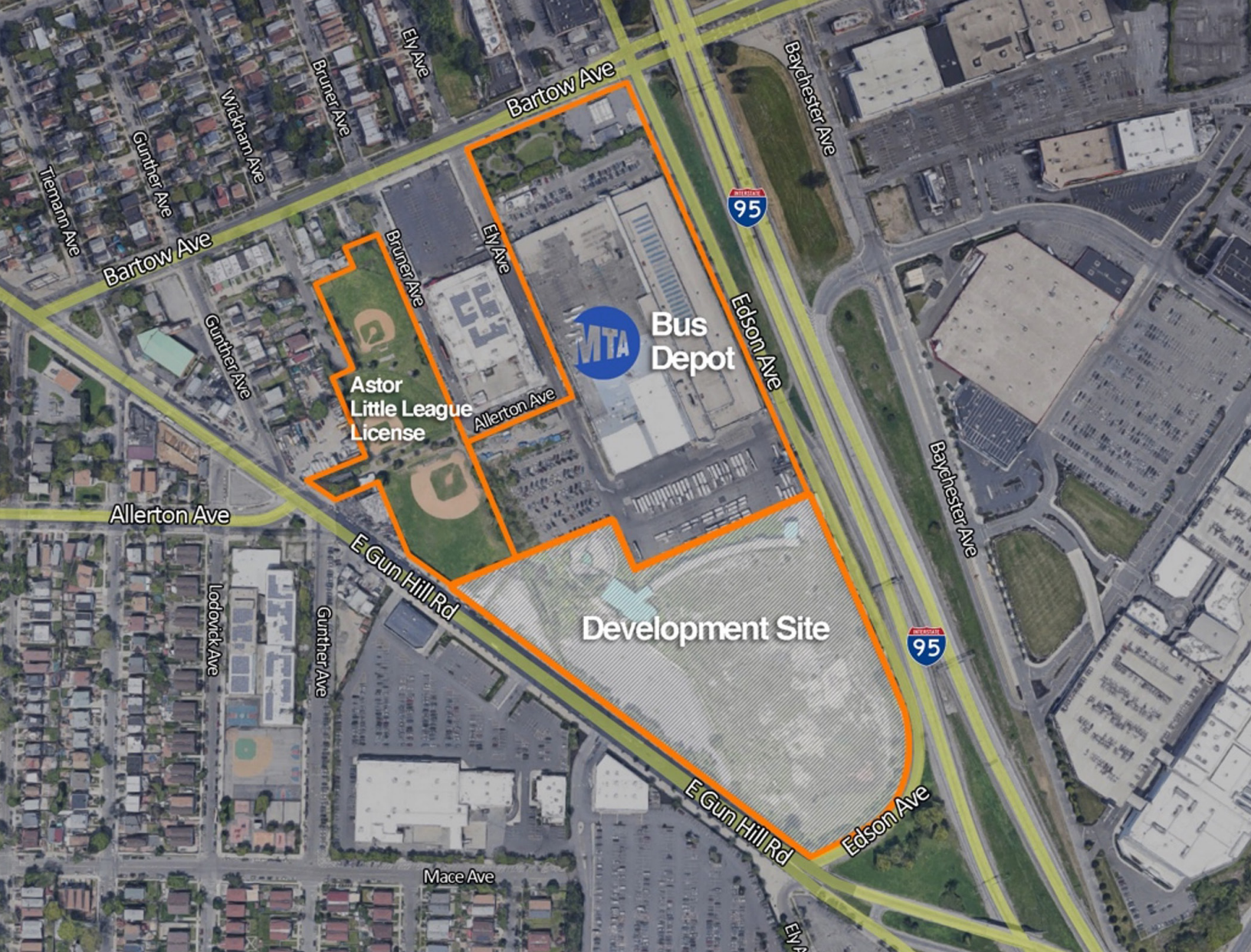
Site Features:

- As of right zoning for warehouse and logistics
- 1M sq. ft. of zoning floor area available
- Ideal for last mile distribution and fleet operators
- Direct access to I-95
- Leverage MTA electric bus investment to build out EV infrastructure

For details and timing of RFP:

Nick Roberts
Senior Real Estate Manager
MTA Transit-Oriented Development
212-878-7229
nicholas.roberts@mtacd.org





The site could support a multi-story, last mile logistics warehouse above and around an MTA electric bus charging facility.