

**The Metropolitan Transportation Authority
Acting By
The MTA Capital Construction Company**



MTA CONTRACT #6240

**DESIGN-BUILD SERVICES
FOR
LIRR EXPANSION PROJECT
FROM FLORAL PARK TO HICKSVILLE**

CONFORMED DOCUMENTS

**VOLUME 1 – DESIGN-BUILD AGREEMENT
EXHIBIT C – PART 4C (Book 8 of 9)**

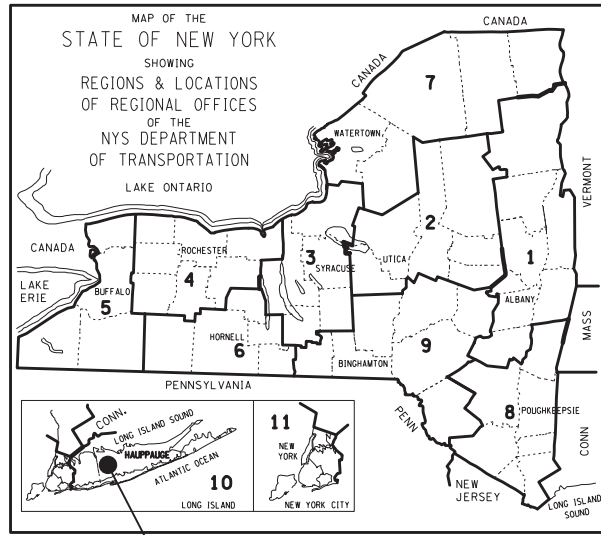
A handwritten signature in blue ink, appearing to be "DRA".

VOLUME 2: TECHNICAL PACKAGE 2: PROJECT DESIGN APPENDIX



LIRR CONTRACT #6240
**Design-Build Services for
LIRR Expansion Project
from Floral Park to
Hicksville**

2.8.9 Stations & Pedestrian Overpasses - MEP



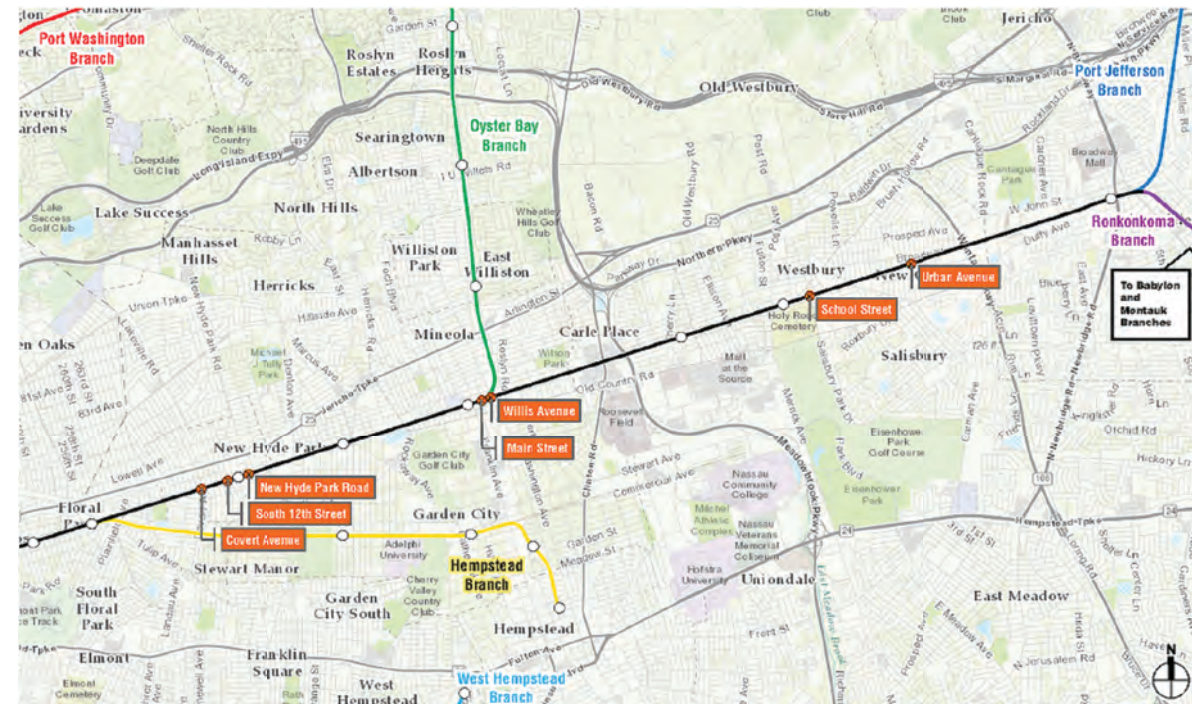
LONG ISLAND RAILROAD EXPANSION
FLORAL PARK TO HICKSVILLE
NASSAU COUNTY
CONTRACT NO. 6240

VOLUME 2 - PACKAGE 2 - 2.8.9
PRELIMINARY STATION PLANS
NOT FOR CONSTRUCTION

THE LATEST REVISIONS OF THE STANDARD SHEETS MAINTAINED BY THE DEPARTMENT, WHICH ARE CURRENT ON THE DATE OF ADVERTISEMENT FOR BIDS, SHALL BE CONSIDERED TO BE IN EFFECT. ALL PAY ITEMS AND WORK CONTAINED IN THE CONTRACT AND ANY ADDITIONAL PAY ITEMS AND WORK ENCOUNTERED DURING THE COURSE OF THE CONTRACT SHALL BE SUBJECT TO THE APPLICABLE STANDARD SHEET(S) UNLESS OTHERWISE SPECIFIED IN THE CONTRACT DOCUMENTS.

ALL WORK CONTEMPLATED UNDER THIS CONTRACT IS TO BE COVERED BY AND IN CONFORMITY WITH THE STANDARD SPECIFICATIONS (US CUSTOMARY) REFERENCED IN THE CONTRACT PROJECT "PROPOSAL" EXCEPT AS MODIFIED BY THESE PLANS OR BY CHANGES SET FORTH IN THE CONTRACT PROJECT "PROPOSAL."


CONTRACTOR'S NAME	_____
AWARD DATE	_____
COMPLETION DATE	_____
FINAL ACCEPTANCE DATE	_____
REGIONAL DIRECTOR	_____
ENGINEER IN CHARGE	_____
FINAL COST TOTAL	_____
FISCAL SHARE	COST(S)




PROJECT LOCATION

THE PROJECT IS LOCATED ALONG THE LONG ISLAND RAILROAD MAIN LINE FROM THE FLORAL PARK RAIL STATION TO THE HICKSVILLE STATION AND INTERLOCKING APPROXIMATELY 10 MILES FROM FLORAL PARK THROUGH NEW HYDE PARK, GARDEN CITY, MINEOLA, WESTBURY, NEW CASSEL, TO HICKSVILLE IN NASSAU COUNTY.

DESIGNED BY:					
DRAWN BY:					
CHECKED BY:					
APPROVED BY:					
NO.	DATE	DESIGNED BY	CHECKED BY	APPROVED BY	REV. NO.

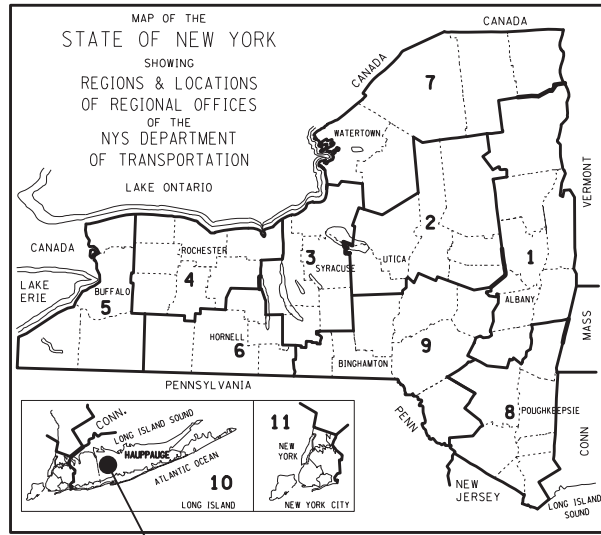
 Long Island Rail Road
MAIN LINE THIRD TRACK
 PROPOSAL – NOT FOR CONSTRUCTION


 Picone | Dragados USA | CCA Civil | Halmar
IT IS A VIOLATION OF SECTION 7209.2 OF THE NEW YORK STATE EDUCATION LAW FOR ANY PERSON, UNLESS ACTING UNDER THE DIRECTION OF A LICENSED PROFESSIONAL ENGINEER, TO ALTER IN ANY WAY PLANS, SPECIFICATIONS, PLATS OR REPORTS TO WHICH THE SEAL OF A PROFESSIONAL ENGINEER HAS BEEN APPLIED. IF AN ITEM BEARING THE SEAL OF A PROFESSIONAL ENGINEER IS ALTERED THE ALTERING ENGINEER SHALL AFFIX TO THE ITEM HIS SEAL AND THE NOTATION "ALTERED BY" FOLLOWED BY HIS SIGNATURE, THE DATE, AND A SPECIFIC DESCRIPTION OF THE ALTERATION.

TITLE SHEET

SCALE:	NTS	CONTRACT NO.
FILE NAME:		DATE
REV. NO.		DRAWING NO.
		SHEET OF

2.8.10 Track



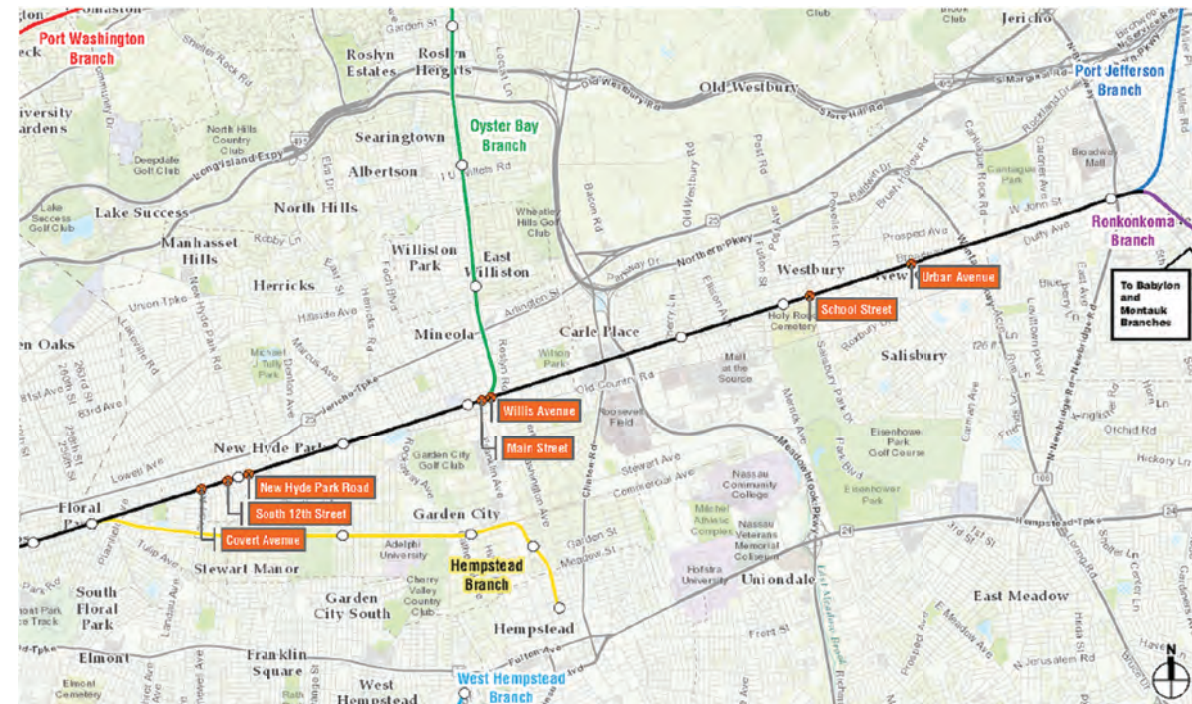
LONG ISLAND RAILROAD EXPANSION
FLORAL PARK TO HICKSVILLE
NASSAU COUNTY
CONTRACT NO. 6240

VOLUME 2 - PACKAGE 2 - 2.8.10
PRELIMINARY TRACK PLANS
NOT FOR CONSTRUCTION

THE LATEST REVISIONS OF THE STANDARD SHEETS MAINTAINED BY THE DEPARTMENT, WHICH ARE CURRENT ON THE DATE OF ADVERTISEMENT FOR BIDS, SHALL BE CONSIDERED TO BE IN EFFECT. ALL PAY ITEMS AND WORK CONTAINED IN THE CONTRACT AND ANY ADDITIONAL PAY ITEMS AND WORK ENCOUNTERED DURING THE COURSE OF THE CONTRACT SHALL BE SUBJECT TO THE APPLICABLE STANDARD SHEET(S) UNLESS OTHERWISE SPECIFIED IN THE CONTRACT DOCUMENTS.

ALL WORK CONTEMPLATED UNDER THIS CONTRACT IS TO BE COVERED BY AND IN CONFORMITY WITH THE STANDARD SPECIFICATIONS (US CUSTOMARY) REFERENCED IN THE CONTRACT PROJECT "PROPOSAL" EXCEPT AS MODIFIED BY THESE PLANS OR BY CHANGES SET FORTH IN THE CONTRACT PROJECT "PROPOSAL."

CONTRACTOR'S NAME	_____
AWARD DATE	_____
COMPLETION DATE	_____
FINAL ACCEPTANCE DATE	_____
REGIONAL DIRECTOR	_____
ENGINEER IN CHARGE	_____
FINAL COST TOTAL	_____
FISCAL SHARE	COST(S)

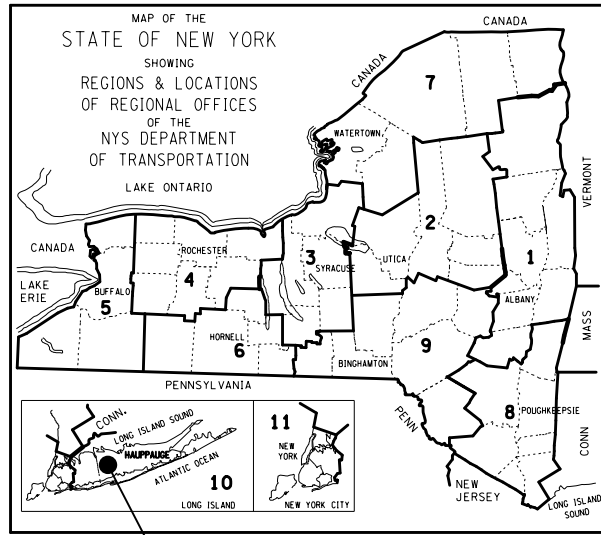


PROJECT LOCATION

THE PROJECT IS LOCATED ALONG THE LONG ISLAND RAILROAD MAIN LINE FROM THE FLORAL PARK RAIL STATION TO THE HICKSVILLE STATION AND INTERLOCKING APPROXIMATELY 10 MILES FROM FLORAL PARK THROUGH NEW HYDE PARK, GARDEN CITY, MINEOLA, WESTBURY, NEW CASSEL, TO HICKSVILLE IN NASSAU COUNTY.

						DESIGNED BY:	MTA Long Island Rail Road	<p>3rd TRACK CONSTRUCTORS Picone Dragados USA CCA Civil Halmar</p> <p>IT IS A VIOLATION OF SECTION 7209.2 OF THE NEW YORK STATE EDUCATION LAW FOR ANY PERSON, UNLESS ACTING UNDER THE DIRECTION OF A LICENSED PROFESSIONAL ENGINEER, TO ALTER IN ANY WAY PLANS, SPECIFICATIONS, PLATS OR REPORTS TO WHICH THE SEAL OF A PROFESSIONAL ENGINEER HAS BEEN APPLIED. IF AN ITEM BEARING THE SEAL OF A PROFESSIONAL ENGINEER IS ALTERED THE ALTERING ENGINEER SHALL AFFIX TO THE ITEM HIS SEAL AND THE NOTATION "ALTERED BY" FOLLOWED BY HIS SIGNATURE, THE DATE, AND A SPECIFIC DESCRIPTION OF THE ALTERATION.</p>	SCALE:	NTS	CONTRACT NO.
						DRAWN BY:			FILE NAME:		DATE
						CHECKED BY:	MAIN LINE THIRD TRACK				DRAWING NO.
						APPROVED BY:	PROPOSAL - NOT FOR CONSTRUCTION			REV. NO.	SHEET OF
NO.	DATE	DESIGNED BY	CHECKED BY	APPROVED BY	REV. NO.	TITLE SHEET					

2.8.11 Drainage



SITE OF WORK
FLORAL PARK TO HICKSVILLE
NASSAU COUNTY



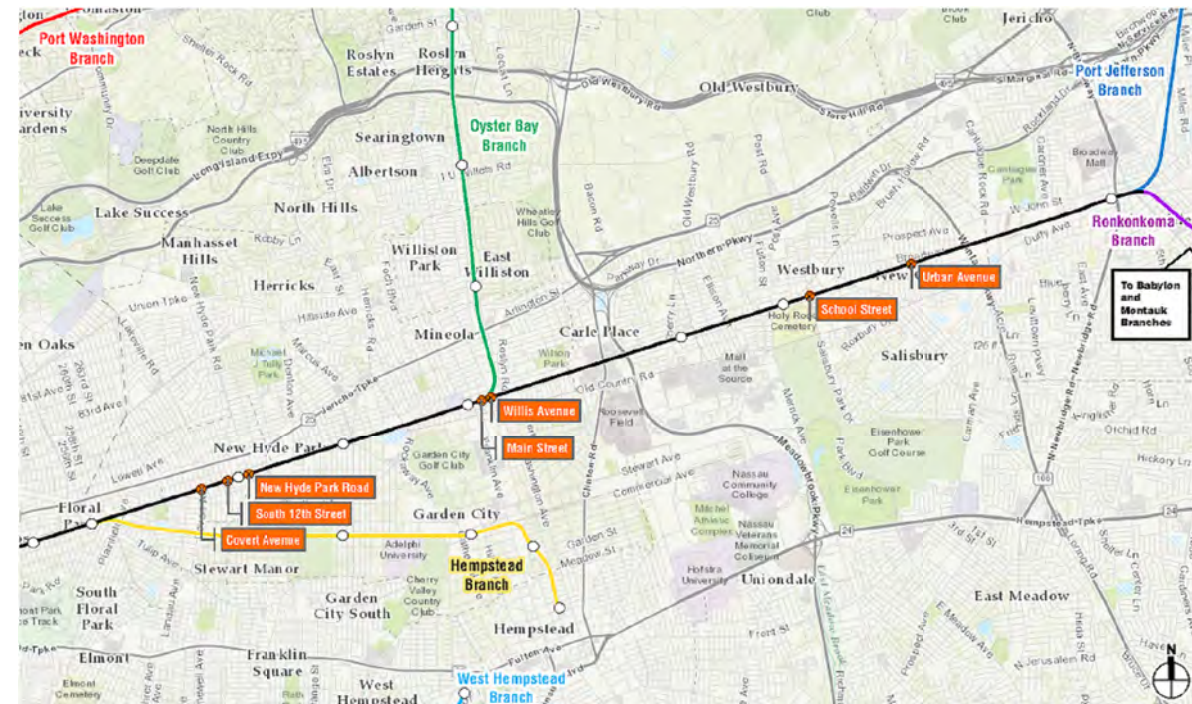
LONG ISLAND RAILROAD EXPANSION
FLORAL PARK TO HICKSVILLE
NASSAU COUNTY
CONTRACT NO. 6240

VOLUME 2 - PACKAGE - 2 - 2.8.11
PRELIMINARY DRAINAGE PLANS
NOT FOR CONSTRUCTION

THE LATEST REVISIONS OF THE STANDARD SHEETS MAINTAINED BY THE DEPARTMENT, WHICH ARE CURRENT ON THE DATE OF ADVERTISEMENT FOR BIDS, SHALL BE CONSIDERED TO BE IN EFFECT. ALL PAY ITEMS AND WORK CONTAINED IN THE CONTRACT AND ANY ADDITIONAL PAY ITEMS AND WORK ENCOUNTERED DURING THE COURSE OF THE CONTRACT SHALL BE SUBJECT TO THE APPLICABLE STANDARD SHEET(S) UNLESS OTHERWISE SPECIFIED IN THE CONTRACT DOCUMENTS.

ALL WORK CONTEMPLATED UNDER THIS CONTRACT IS TO BE COVERED BY AND IN CONFORMITY WITH THE STANDARD SPECIFICATIONS (US CUSTOMARY) REFERENCED IN THE CONTRACT PROJECT "PROPOSAL" EXCEPT AS MODIFIED BY THESE PLANS OR BY CHANGES SET FORTH IN THE CONTRACT PROJECT "PROPOSAL."

CONTRACTOR'S NAME _____
AWARD DATE _____
COMPLETION DATE _____
FINAL ACCEPTANCE DATE _____
REGIONAL DIRECTOR _____
ENGINEER IN CHARGE _____
FINAL COST TOTAL _____
FISCAL SHARE _____ COST(S) _____



PROJECT LOCATION

THE PROJECT IS LOCATED ALONG THE LONG ISLAND RAILROAD MAIN LINE FROM THE FLORAL PARK RAIL STATION TO THE HICKSVILLE STATION AND INTERLOCKING APPROXIMATELY 10 MILES FROM FLORAL PARK THROUGH NEW HYDE PARK, GARDEN CITY, MINEOLA, WESTBURY, NEW CASSEL, TO HICKSVILLE NASSAU COUNTY.

DESIGNED BY:					
DRAWN BY:					
CHECKED BY:					
APPROVED BY:					
NO.	DATE	DESIGNED BY	CHECKED BY	APPROVED BY	REV. NO.

DESIGNED BY:	MTA Long Island Rail Road
DRAWN BY:	
CHECKED BY:	MAIN LINE THIRD TRACK
APPROVED BY:	PROPOSAL - NOT FOR CONSTRUCTION

3rd TRACK CONSTRUCTORS
Picone | Dragados USA | CCA Civil | Halmar

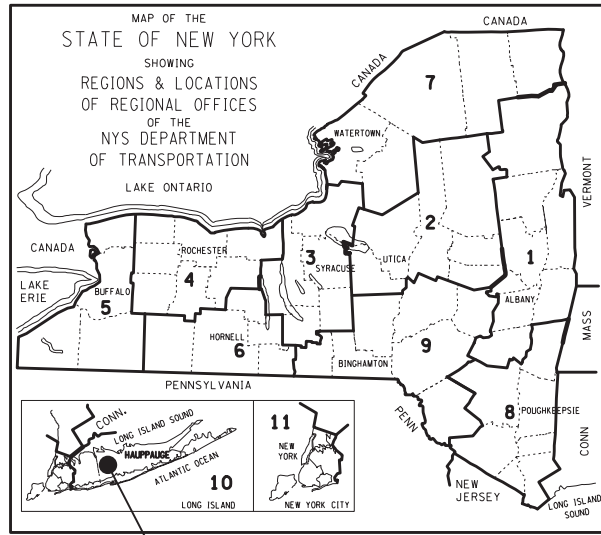
IT IS A VIOLATION OF SECTION 7209.2 OF THE NEW YORK STATE EDUCATION LAW FOR ANY PERSON, UNLESS ACTING UNDER THE DIRECTION OF A LICENSED PROFESSIONAL ENGINEER, TO ALTER IN ANY WAY PLANS, SPECIFICATIONS, PLATS OR REPORTS TO WHICH THE SEAL OF A PROFESSIONAL ENGINEER HAS BEEN APPLIED. IF AN ITEM BEARING THE SEAL OF A PROFESSIONAL ENGINEER IS ALTERED THE ALTERING ENGINEER SHALL AFFIX TO THE ITEM HIS SEAL AND THE NOTATION "ALTERED BY" FOLLOWED BY HIS SIGNATURE, THE DATE, AND A SPECIFIC DESCRIPTION OF THE ALTERATION.

SCALE:	NTS
FILE NAME:	
REV. NO.	

CONTRACT NO.	
DATE	
DRAWING NO.	
SHEET	OF

TITLE SHEET

2.8.12 Traction Power



SITE OF WORK
FLORAL PARK TO HICKSVILLE
NASSAU COUNTY



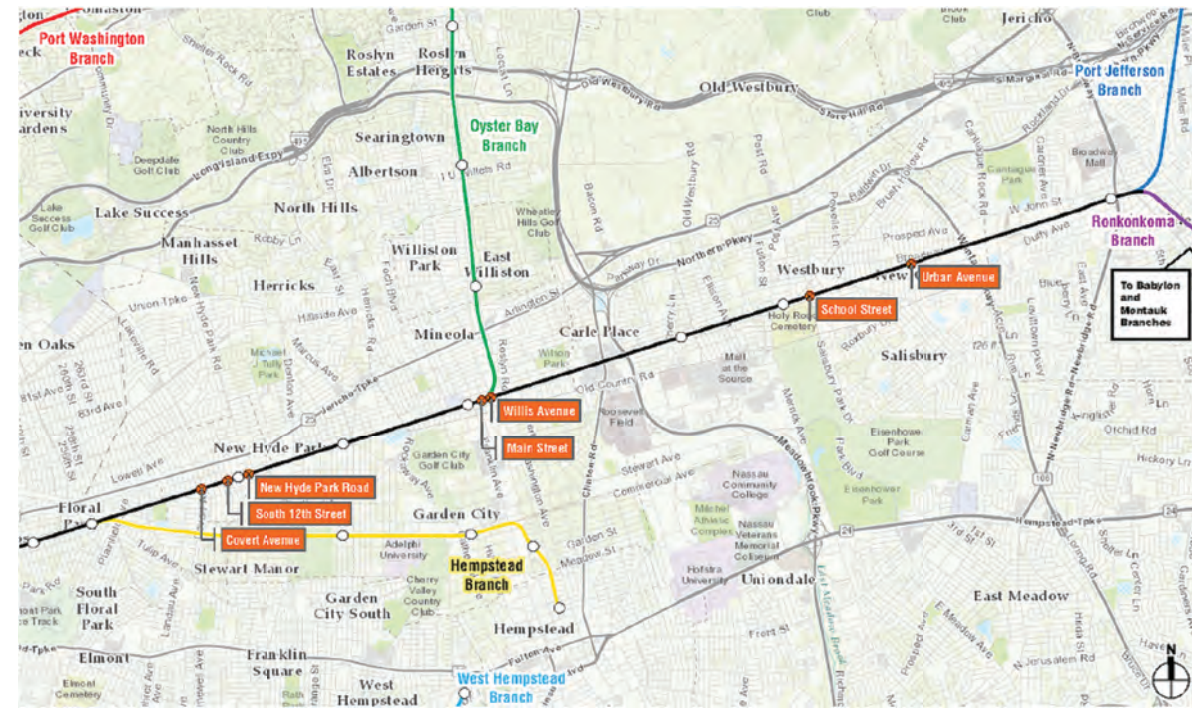
LONG ISLAND RAILROAD EXPANSION
FLORAL PARK TO HICKSVILLE
NASSAU COUNTY
CONTRACT NO. 6240

VOLUME 2 - PACKAGE 2 - 2.8.12
PRELIMINARY TRACTION POWER PLANS
NOT FOR CONSTRUCTION

THE LATEST REVISIONS OF THE STANDARD SHEETS MAINTAINED BY THE DEPARTMENT, WHICH ARE CURRENT ON THE DATE OF ADVERTISEMENT FOR BIDS, SHALL BE CONSIDERED TO BE IN EFFECT. ALL PAY ITEMS AND WORK CONTAINED IN THE CONTRACT AND ANY ADDITIONAL PAY ITEMS AND WORK ENCOUNTERED DURING THE COURSE OF THE CONTRACT SHALL BE SUBJECT TO THE APPLICABLE STANDARD SHEET(S) UNLESS OTHERWISE SPECIFIED IN THE CONTRACT DOCUMENTS.

ALL WORK CONTEMPLATED UNDER THIS CONTRACT IS TO BE COVERED BY AND IN CONFORMITY WITH THE STANDARD SPECIFICATIONS (US CUSTOMARY) REFERENCED IN THE CONTRACT PROJECT "PROPOSAL" EXCEPT AS MODIFIED BY THESE PLANS OR BY CHANGES SET FORTH IN THE CONTRACT PROJECT "PROPOSAL."

CONTRACTOR'S NAME	_____
AWARD DATE	_____
COMPLETION DATE	_____
FINAL ACCEPTANCE DATE	_____
REGIONAL DIRECTOR	_____
ENGINEER IN CHARGE	_____
FINAL COST TOTAL	_____
FISCAL SHARE	COST(S)



PROJECT LOCATION
THE PROJECT IS LOCATED ALONG THE LONG ISLAND RAILROAD MAIN LINE FROM THE FLORAL PARK RAIL STATION TO THE HICKSVILLE STATION AND INTERLOCKING APPROXIMATELY 10 MILES FROM FLORAL PARK THROUGH NEW HYDE PARK, GARDEN CITY, MINEOLA, WESTBURY, NEW CASSEL, TO HICKSVILLE IN NASSAU COUNTY.

DESIGNED BY:					
DRAWN BY:					
CHECKED BY:					
APPROVED BY:					
NO.	DATE	DESIGNED BY	CHECKED BY	APPROVED BY	REV. NO.

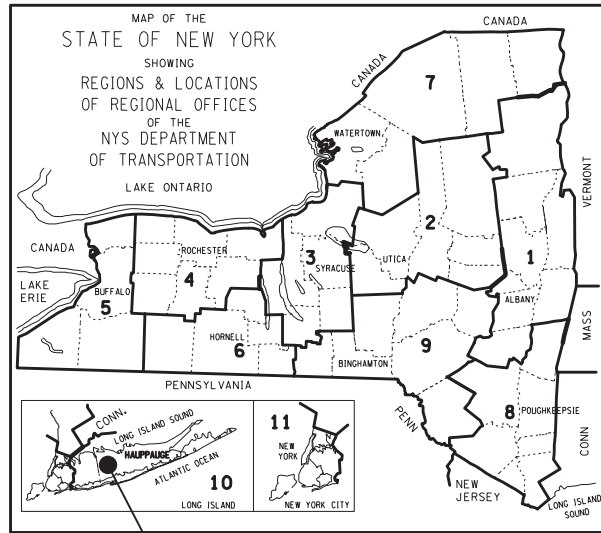
DESIGNED BY: **MTA** Long Island Rail Road
DRAWN BY:
CHECKED BY: MAIN LINE THIRD TRACK
APPROVED BY: PROPOSAL – NOT FOR CONSTRUCTION

3rd TRACK CONSTRUCTORS
Picone | Dragados USA | CCA Civil | Halmar
IT IS A VIOLATION OF SECTION 7209.2 OF THE NEW YORK STATE EDUCATION LAW FOR ANY PERSON, UNLESS ACTING UNDER THE DIRECTION OF A LICENSED PROFESSIONAL ENGINEER, TO ALTER IN ANY WAY PLANS, SPECIFICATIONS, PLATS OR REPORTS TO WHICH THE SEAL OF A PROFESSIONAL ENGINEER HAS BEEN APPLIED. IF AN ITEM BEARING THE SEAL OF A PROFESSIONAL ENGINEER IS ALTERED THE ALTERING ENGINEER SHALL AFFIX TO THE ITEM HIS SEAL AND THE NOTATION "ALTERED BY" FOLLOWED BY HIS SIGNATURE, THE DATE, AND A SPECIFIC DESCRIPTION OF THE ALTERATION.

TITLE SHEET

SCALE:	NTS	CONTRACT NO.
FILE NAME:		DATE
REV. NO.		DRAWING NO.
		SHEET OF

2.8.14 Signals & Train Control & Supervisory



SITE OF WORK
FLORAL PARK TO HICKSVILLE
NASSAU COUNTY



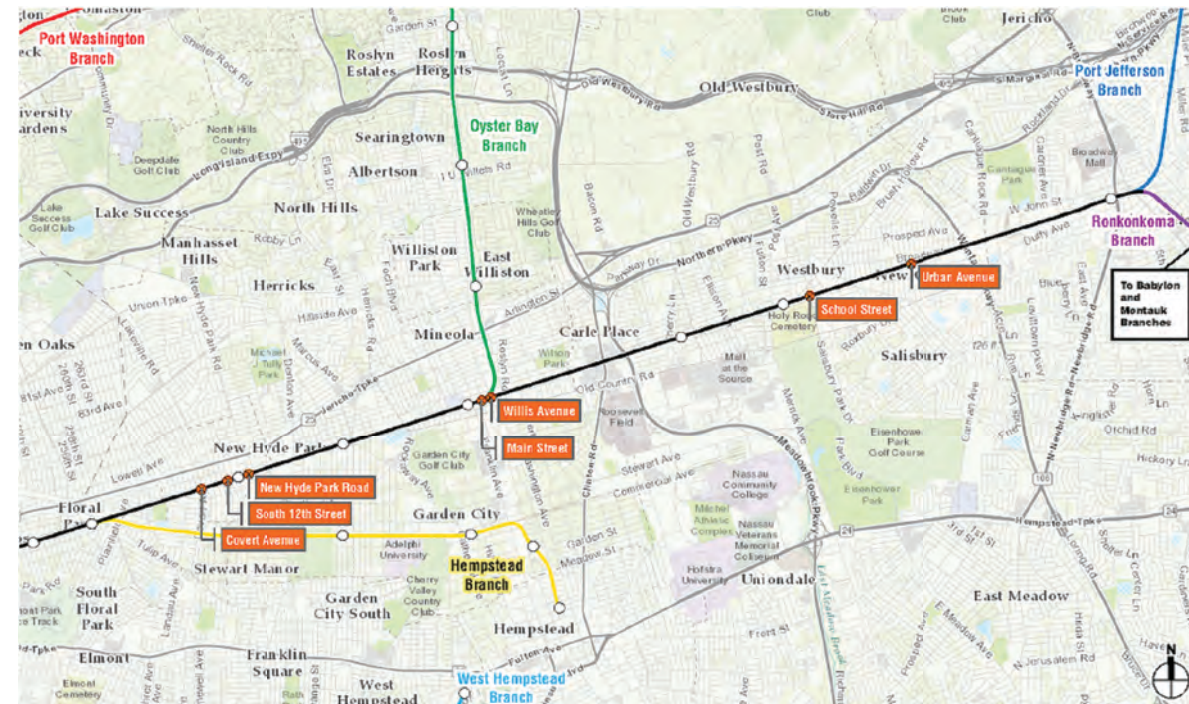
LONG ISLAND RAILROAD EXPANSION
FLORAL PARK TO HICKSVILLE
NASSAU COUNTY
CONTRACT NO. 6240

VOLUME 2 - PACKAGE 2 - 2.8.14
PRELIMINARY SIGNALS & TRAIN CONTROL PLANS
NOT FOR CONSTRUCTION

THE LATEST REVISIONS OF THE STANDARD SHEETS MAINTAINED BY THE DEPARTMENT, WHICH ARE CURRENT ON THE DATE OF ADVERTISEMENT FOR BIDS, SHALL BE CONSIDERED TO BE IN EFFECT. ALL PAY ITEMS AND WORK CONTAINED IN THE CONTRACT AND ANY ADDITIONAL PAY ITEMS AND WORK ENCOUNTERED DURING THE COURSE OF THE CONTRACT SHALL BE SUBJECT TO THE APPLICABLE STANDARD SHEET(S) UNLESS OTHERWISE SPECIFIED IN THE CONTRACT DOCUMENTS.

ALL WORK CONTEMPLATED UNDER THIS CONTRACT IS TO BE COVERED BY AND IN CONFORMITY WITH THE STANDARD SPECIFICATIONS (US CUSTOMARY) REFERENCED IN THE CONTRACT PROJECT "PROPOSAL" EXCEPT AS MODIFIED BY THESE PLANS OR BY CHANGES SET FORTH IN THE CONTRACT PROJECT "PROPOSAL."

CONTRACTOR'S NAME	_____
AWARD DATE	_____
COMPLETION DATE	_____
FINAL ACCEPTANCE DATE	_____
REGIONAL DIRECTOR	_____
ENGINEER IN CHARGE	_____
FINAL COST TOTAL	_____
FISCAL SHARE	COST(S)



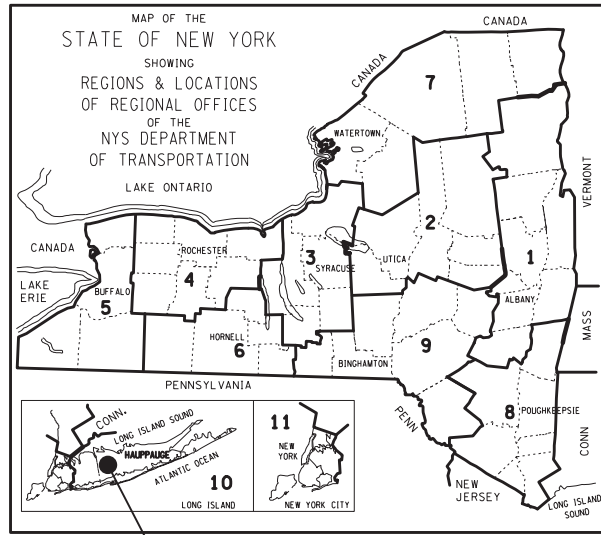
PROJECT LOCATION

THE PROJECT IS LOCATED ALONG THE LONG ISLAND RAILROAD MAIN LINE FROM THE FLORAL PARK RAIL STATION TO THE HICKSVILLE STATION AND INTERLOCKING APPROXIMATELY 10 MILES FROM FLORAL PARK THROUGH NEW HYDE PARK, GARDEN CITY, MINEOLA, WESTBURY, NEW CASSEL, TO HICKSVILLE IN NASSAU COUNTY.

						DESIGNED BY:	MTA Long Island Rail Road	3 rd TRACK CONSTRUCTORS Picone Dragados USA CCA Civil Halmar		SCALE:	NTS	CONTRACT NO.
						DRAWN BY:				FILE NAME:		DATE
						CHECKED BY:	MAIN LINE THIRD TRACK					DRAWING NO.
						APPROVED BY:	PROPOSAL - NOT FOR CONSTRUCTION	IT IS A VIOLATION OF SECTION 7209.2 OF THE NEW YORK STATE EDUCATION LAW FOR ANY PERSON, UNLESS ACTING UNDER THE DIRECTION OF A LICENSED PROFESSIONAL ENGINEER, TO ALTER IN ANY WAY PLANS, SPECIFICATIONS, PLATS OR REPORTS TO WHICH THE SEAL OF A PROFESSIONAL ENGINEER HAS BEEN APPLIED, IF AN ITEM BEARING THE SEAL OF A PROFESSIONAL ENGINEER IS ALTERED THE ALTERING ENGINEER SHALL AFFIX TO THE ITEM HIS SEAL AND THE NOTATION "ALTERED BY" FOLLOWED BY HIS SIGNATURE, THE DATE, AND A SPECIFIC DESCRIPTION OF THE ALTERATION.		REV. NO.		SHEET OF
NO.	DATE	DESIGNED BY	CHECKED BY	APPROVED BY	REV. NO.	TITLE SHEET						

2.8.15 & 2.8.16 Communications & Security Systems

THIS DOCUMENT HAS BEEN REDACTED FOR PUBLIC DISTRIBUTION



SITE OF WORK
FLORAL PARK TO HICKSVILLE
NASSAU COUNTY



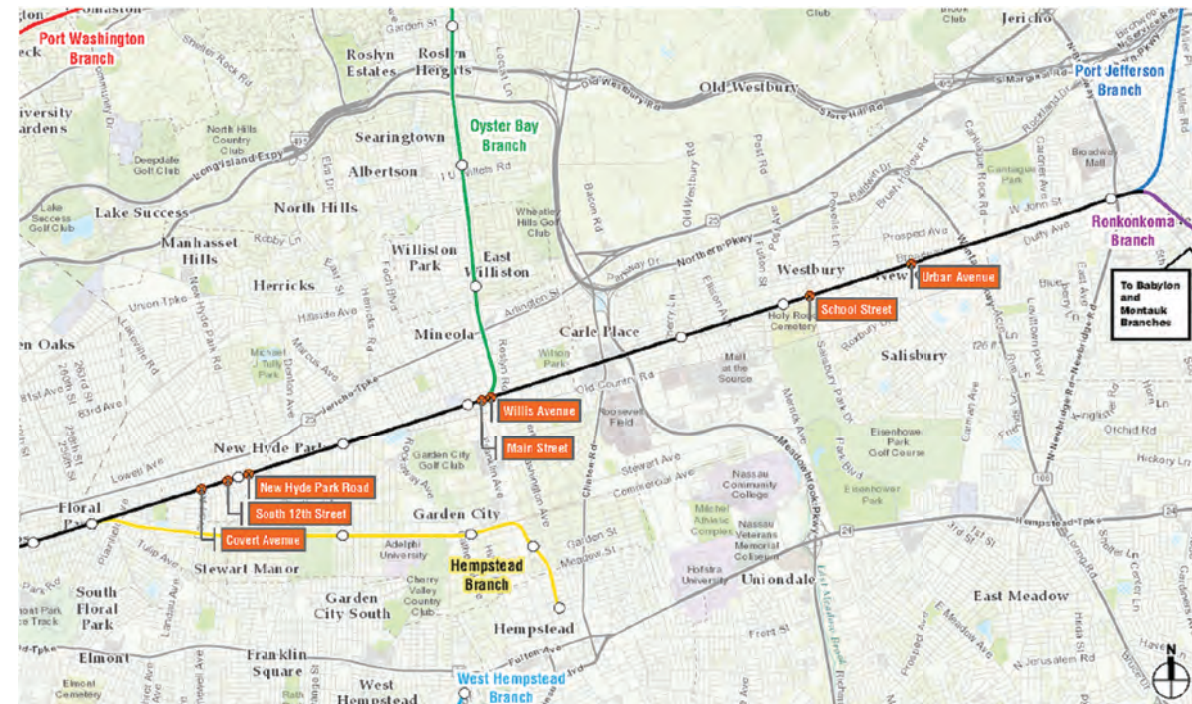
LONG ISLAND RAILROAD EXPANSION
FLORAL PARK TO HICKSVILLE
NASSAU COUNTY
CONTRACT NO. 6240

VOLUME 2 - PACKAGE 2 - 2.8.15
PRELIMINARY COMMUNICATIONS PLANS
NOT FOR CONSTRUCTION

THE LATEST REVISIONS OF THE STANDARD SHEETS MAINTAINED BY THE DEPARTMENT, WHICH ARE CURRENT ON THE DATE OF ADVERTISEMENT FOR BIDS, SHALL BE CONSIDERED TO BE IN EFFECT. ALL PAY ITEMS AND WORK CONTAINED IN THE CONTRACT AND ANY ADDITIONAL PAY ITEMS AND WORK ENCOUNTERED DURING THE COURSE OF THE CONTRACT SHALL BE SUBJECT TO THE APPLICABLE STANDARD SHEET(S) UNLESS OTHERWISE SPECIFIED IN THE CONTRACT DOCUMENTS.

ALL WORK CONTEMPLATED UNDER THIS CONTRACT IS TO BE COVERED BY AND IN CONFORMITY WITH THE STANDARD SPECIFICATIONS (US CUSTOMARY) REFERENCED IN THE CONTRACT PROJECT "PROPOSAL" EXCEPT AS MODIFIED BY THESE PLANS OR BY CHANGES SET FORTH IN THE CONTRACT PROJECT "PROPOSAL."

CONTRACTOR'S NAME	_____
AWARD DATE	_____
COMPLETION DATE	_____
FINAL ACCEPTANCE DATE	_____
REGIONAL DIRECTOR	_____
ENGINEER IN CHARGE	_____
FINAL COST TOTAL	_____
FISCAL SHARE	COST(S)



PROJECT LOCATION

THE PROJECT IS LOCATED ALONG THE LONG ISLAND RAILROAD MAIN LINE FROM THE FLORAL PARK RAIL STATION TO THE HICKSVILLE STATION AND INTERLOCKING APPROXIMATELY 10 MILES FROM FLORAL PARK THROUGH NEW HYDE PARK, GARDEN CITY, MINEOLA, WESTBURY, NEW CASSEL, TO HICKSVILLE IN NASSAU COUNTY.

						DESIGNED BY:	MTA Long Island Rail Road	3 rd TRACK CONSTRUCTORS Picone Dragados USA CCA Civil Halmar		SCALE:	NTS	CONTRACT NO.	
						DRAWN BY:				FILE NAME:		DATE	
						CHECKED BY:	MAIN LINE THIRD TRACK					DRAWING NO.	
						APPROVED BY:	PROPOSAL - NOT FOR CONSTRUCTION	IT IS A VIOLATION OF SECTION 7209.2 OF THE NEW YORK STATE EDUCATION LAW FOR ANY PERSON, UNLESS ACTING UNDER THE DIRECTION OF A LICENSED PROFESSIONAL ENGINEER, TO ALTER IN ANY WAY PLANS, SPECIFICATIONS, PLATS OR REPORTS TO WHICH THE SEAL OF A PROFESSIONAL ENGINEER HAS BEEN APPLIED. IF AN ITEM BEARING THE SEAL OF A PROFESSIONAL ENGINEER IS ALTERED THE ALTERING ENGINEER SHALL AFFIX TO THE ITEM HIS SEAL AND THE NOTATION "ALTERED BY" FOLLOWED BY HIS SIGNATURE, THE DATE, AND A SPECIFIC DESCRIPTION OF THE ALTERATION.		TITLE SHEET			
NO.	DATE	DESIGNED BY	CHECKED BY	APPROVED BY	REV. NO.							REV. NO.	SHEET OF

