

MILEPOSTS

A Newsletter for MTA Metro-North Railroad Customers



August 2014

- **Summer Getaways** ▪ **Honoring Jackie O** ▪ **Food Hall** ▪ **Dog Days of Summer** ▪ **Mail&Ride** ▪ **Safety Rule** ▪ **Courtesy Corner**

Summer Isn't Over Yet!



The season doesn't "fold its tent" until September 20! That gives you plenty of time to take Metro-North's discount Getaways to some of the region's hottest (and by that we mean coolest) attractions.

Here's a partial list to get you started:

Fair Deal — The 169th Dutchess County Fair takes place August 19-23 in quaint Rhinebeck, NY. It's the largest six-day county fair in the state,

featuring 162 acres of family fun. Immerse yourself in agriculture (*just watch where you step*) with thousands of farm animals. Family activities include petting zoos, racing pigs (*gentleman, curl your tails*), dock-diving dogs and more than 50 carnival rides. Over 100 vendors serve everything from deep fried Oreos (*everything really is better fried*) to full-course meals. [See more details on our discount package.](#)

Believe This... You Get to Dine Too!— six-legged cow... a lock of Elvis's hair... a life-size albino giraffe. This is "culture" with a twist! Our **Ripley's Believe it or Not Dine & Discover Package** offers you the ultimate insight into the world of the odd, the bizarre, and the strange. Take a self-guided tour and explore hundreds of fascinating artifacts and outrageous interactive exhibits designed to awe and entertain the entire family. **Plus you get a free meal from Planet Hollywood!** [See more details on our discount package.](#)

We also have an **Eat, Play, Win & See the Stars discount package to Madame Tussaud's.** **You get discount admission and a voucher for a free meal at Dave & Busters,** the one and only place where you can enjoy great food and drink and play hundreds of awesome arcade games. [See more details on our discount package.](#)

What Happens in Yonkers Stays in Yonkers — You don't have to fly to Vegas to live the Vegas life. In fact, you bring Sin City to New York with just a half-hour train ride to Yonkers Raceway. **Empire City** is your haven for over 5,300 slot machines, restaurants, a food court, and a "Good Time Room" to host your private party of up to 300 guests. [See more details on our discount package.](#)

Island Life —Take our discount **Bannerman's Island Cruise** package and board the Estuary Steward for a scenic cruise along the Hudson. The 30-minute ride will take you from the ferry dock at Beacon Station to Bannerman's Island. There you will tour Bannerman's Castle, which looks like a medieval ruin somewhere in Europe. [See more details on our discount package.](#)

For a complete list of all our Discount Getaways, including the Norwalk Oyster Festival, Bronx Zoo, NY Botanical Garden, New York Skyride, Rye Playland and more, [click here!](#)

[Back to Top](#)

First Lady... Fashion Icon... Book Editor...

Jacqueline Kennedy Onassis was known for her many accomplishments. But at Metro-North, she is best known for leading an historic preservation campaign to save Grand

Central Terminal in the 1970s.



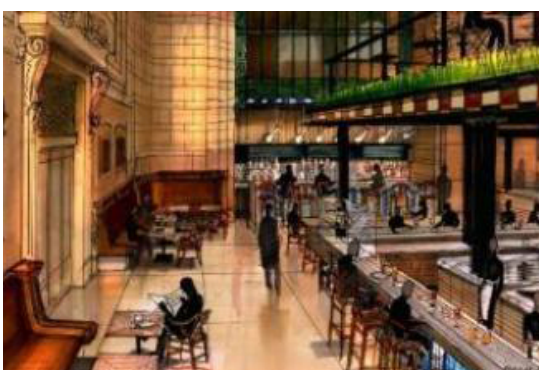
So it was only fitting that we recently dedicated the newly renovated 42nd Street and Park Avenue entrance foyer to Grand Central Terminal as the "Jacqueline Kennedy Onassis Foyer."

New features of the foyer include a plaque honoring her work to save the Terminal; the name rendered in bronze letters on the wall and painted along the arch leading to 42nd Street, as well as two display cases rotating digital imagery that recount Jackie O's life and the 101-year history of Grand Central.

[See more details.](#)

[Back to Top](#)

A Nordic Treat



No, we are not talking about Lutefisk.* *(Here's to the brave souls that eat and enjoy that!)*

A 16,000-square-foot food hall, restaurant and take-out venue to be operated by world-renowned restaurateur Claus Meyer is planned for Grand Central Terminal.

Meyer, who with a young Rene Redzepi as headchef and partner, created Noma in Copenhagen, ranked "Best Restaurant in the World" in annual surveys by Restaurant

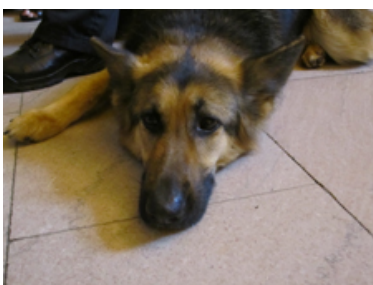
magazine in 2010, 2011, 2012 and 2014. Noma is a contraction of the Danish words for 'Nordic' and 'Food'.

The most prominent component of the venture would be a market-style array of casual food pavilions in the western half of Grand Central's Vanderbilt Hall, the Terminal's majestic former main waiting room, at 42nd Street and Park Avenue.

[See more details.](#)

[Back to Top](#)

Here's a Story for the Dog Days of Summer!



Nineteen new K9s (canines) recently entered service with the MTA Police Department, the NYC Police Department, Putnam County Sheriff's Office, and the police departments of Brewster and Warwick, N.Y.

With their human partners in tow, the four-legged graduates marched their way up to the podium to receive their awards at a recent graduation ceremony in Grand Central—a collar with small police shields that were placed around their necks.

After 16 weeks of intense training, it was an auspicious occasion for the explosive-detecting K9s, who constituted the biggest graduating class to date. Twelve of the dogs entered the MTA Police Department's K9 unit.

Also in attendance at the ceremony, which was held in Grand Central Terminal's Vanderbilt Hall, were the families of fallen military veterans and police officers. To keep the memory of these heroes alive, the dogs were named after them. These highly trained K9s aren't just local; they hail from overseas! Dogs are obtained from vendors in Europe such as Czechoslovakia. (Of course, a search is first conducted of locally in shelters, because it's nice to give the dogs a home.)

[See more details.](#)

Windows of Opportunity!



Metro-North's **Mail&Ride** Department now has two Customer Service windows open in Grand Central Terminal, located next to the New York Tourism window.

Mail&Ride Customer Service Representatives are available at these windows during the AM-Peak, lunchtime and PM-Peak periods to assist **Mail&Ride** customers with all inquiries about the service. So stop by at the next opportunity.

Not a **Mail&Ride** customer? [Find out all about the convenience of this ticket-by-mail program.](#)

[Back to Top](#)

Safety Rule of the Issue

Today's technology lets us stay "connected" 24/7. And we have to ask, "Is that really such a good thing?"

There comes a time when you have to stay focused on something other than your smartphone or tablet. And one of those "times" is when you are getting on and off your train. Stop talking, texting, or watching that movie, and instead watch where you are going!

Be aware of your surroundings, not your next tweet. Watch your step on stairs and escalators, stay behind yellow platform lines, and be sure to step over the gap between your train and the platform.

We bring you these rules not only to stay in touch on a monthly basis, but to remind you that your safety is always our first priority.

[Back to Top](#)

Courtesy Corner



Everyone likes to dine "alfresco" in the summer, enjoying a meal or snack in an exotic outdoor locale.

For some of you, that means having a quick bite on the go at one of our stations. (*Hey, it may not be the Piazza Navona, but at least it is outdoors.*)

So after you've finished enjoying that sandwich, or sipping that latte, remember to dispose of any containers or wrappers in the proper receptacle. Please don't throw the trash on the tracks or on the platform.

It shows *buongusto* (good taste) after enjoying something that tastes good. And it's the courteous thing to do!

[Back to Top](#)