

MILEPOSTS

A Newsletter for MTA Metro-North Railroad Customers



June 2014

- [Harlem Line Gang](#) ▪ [Greenwich Control House Update](#) ▪
- [Track Inspections System](#) ▪ [More Power](#) ▪ [Hurricane Season](#)
- [Safety Rule](#) ▪ [Courtesy Corner](#) ▪ [Getaways](#) ▪

Gang Activity on the Harlem Line



Gang activity has been sighted at our Harlem Line stations. *(No, not of the "Sharks vs. Jets" variety. We haven't seen anyone who can dance that well!)*

We are talking about our Stations Gangs, and word has it that they are doing some "damage"— to all the unavoidable wear and tear at our stations!

This year, these expert enhancers are already applying "muscle" at Brewster and Goldens Bridge Stations before they move on to Scarsdale, Hartsdale, Purdy's, and Croton-Falls.

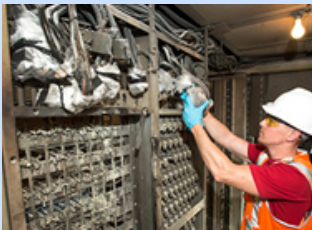
The gangs have been busy for four years now — this year, two paint gangs, 2-3 electricians, and 2-3 tin smiths are teaming up to focus on making stations easy on the eyes.

They've got a long "to do" list — depending on what each station requires.

[See more details.](#)

[Back to Top](#)

New Haven Line: Greenwich Switch Control House Fire Update



New Haven Line customers should anticipate 5-10 minute delays until further notice due to a fire that destroyed a critical piece of equipment that controls switches and signals near Greenwich on Saturday, May 10th.

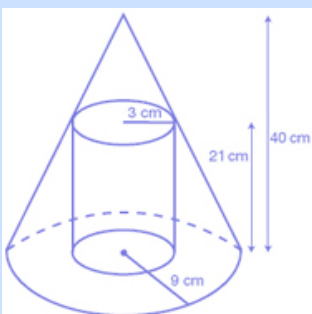
The highly complex process to restore limited switching capability at Greenwich has progressed and an emergency locally-controlled manual panel was installed Friday, May 23rd, tested and is currently operating in the damaged control

house.

[See more details.](#)

[Back to Top](#)

A Quick (Track) Geometry Lesson



Don't doze off just yet. This is track geometry — the kind that has an impact on your daily commute. *(Which makes it worthy of your attention!)*

Metro-North is purchasing the Autonomous Track Geometry Inspection System (ATGIS), which will be mounted on select equipment as part of our continued focus on improving safety on the railroad.

The system will provide continuous data that will be used to identify track geometry anomalies early and prevent failures.

The new system will complement the semi-annual inspections now performed by a staffed track geometry car, and increase the information available to our track engineers regarding track gauge, curvature, height and overall alignment.

[See more details.](#)

[Back to Top](#)

More Power to You!

An ongoing power upgrade for the New Haven Line recently achieved a major milestone with the installation of a second new transformer at our Mount Vernon substation. The work provides additional redundancy and increased capacity.

Four 35-year-old transformers were replaced with two more efficient new ones, ensuring reliability to handle additional power loads and allowing electricity generated by the brakes of the railroad's new fleet of M8 rail cars to be fed back into the power grid.

[See more details.](#)

[Back to Top](#)

The Longest Season...



...is Hurricane Season, stretching from June 1 through November 30. (*We remember when those months were just called "summer" and "fall."*) That means for five months there is the potential for high winds, heavy rains, and dangerous lightning which can result in flooding, mudslides, fallen trees, and downed power lines along our right-of-way

We can't stop the weather's worst from happening, but we can control our team's response to it. In the event of a hurricane or severe storm, we have several operating plans at the ready, depending on the weather's impact.

[See more details.](#)

[Back to Top](#)

Safety Rule of the Issue

Don't get hurt—financially! Protect against possible credit/debit card fraud when using Ticket Vending Machines (TVMs).

- Beware of suspicious activity at or around the TVMs. Walk away from the machine if you notice someone watching you.
- When entering your PIN number, stand close to the machine and hold your hand or a piece of paper over the keypad.
- Before using a TVM, examine nearby objects that might conceal a camera; check the card slot for a plastic sheath before inserting your card.
- Beware of strangers offering to help you with a TVM or ATM that appears disabled and notify someone responsible for the security of the machine.

We bring you these reminders because your safety — on our trains or at our stations — is always our first priority!

[Back to Top](#)

Courtesy Corner



This month, we ask that you "toe" the line and remember to keep your shoes on and your feet off the seats!

After a long, hot day encased in leather (*remember, we are talking feet here*) you may be tempted to let your "tootsies" out and put them up for a well-deserved rest.

But don't! It takes away a seat from one of your fellow travelers, who may be just as tired as you. Plus, with more than 250,000 sweat glands each, your feet are among the most perspiring parts of the body. (*Take that, armpits!*)

So keep those shoes on, and your feet off the seats. It's the courteous thing to do!

Revive Yourself!



Take Metro-North's discount package to **The Clearwater Festival Great Hudson River Revival**, June 21 & 22 at Croton Point Park

This year's Festival honors co-founders Pete and Toshi Seeger. Over 100 artists will perform on seven bio-diesel or solar powered stages including: Lucinda Williams, Norah Jones' new project Puss 'N Boots, Rufus Wainwright, The Mavericks, Richard Thompson, Bettye LaVette, Buckwheat Zydeco, Garland Jeffreys (a Mileposts favorite) and more!

Purchase your discount package from any Metro-North ticket office or full-service ticket vending machine (excluding Croton Harmon Station) and through [WebTicket](#)

[See more details on our Clearwater Getaway package.](#)

[See a full listing of our discount Getaways.](#)

Published by
Corporate & Public Affairs
MTA Metro-North Railroad
345 Madison Avenue
New York, NY 10017
www.mta.info

[MilePosts Archive](#)