

MILEPOSTS

A Newsletter for MTA Metro-North Railroad Customers



September 2018

- **New Schedules** ▪ **Park Ave Tunnel** ▪ **Onboard Security** ▪
- Suicide Prevention Walk** ▪ **Train to the Game** ▪
- Hurricane Season Safety** ▪ **Getaways** ▪ **Safety Rules** ▪
- Courtesy Corner** ▪



New Timetables Effective September 30

Our new timetables, effective Sunday, September 30, feature seasonal adjustments and changes to accommodate ongoing infrastructure work and includes special service during the holidays.

On the Hudson Line,

- Extra “Fall Foliage” trains will operate between Grand Central Terminal, Beacon and Poughkeepsie on October 20, 27 and November 3.

On the Harlem Line,

- To accommodate the new train schedules, the 12:10 AM outbound train from Grand Central Terminal to Southeast will have 1 minute added to its schedule between North White Plains and Valhalla to provide a consistent schedule duration; and the connecting 1:48 AM train at Southeast to Dover Plains will depart Southeast 1 minute later.
- The outbound 1:20 AM train from GCT to North White Plains on weekends will arrive at North White Plains 2 minutes later.
- The half-hourly trains which were truncated to Crestwood in support of the White Plains Station enhancement will be reinstated to North White Plains on several holiday weekend Fridays.

On the New Haven Line,

- The GCT-bound train leaving New Haven – State St. at 3:20 PM will depart 2 minutes earlier and adds a stop at Green’s Farms.

New timetables will be available

in Grand Central, at outlying stations, [online](#) and via our [Metro-North Train Time app](#) for [iPhone](#) or [Android](#).

Please be sure to pick up a new timetable for possible changes to your commute.

As always, we thank you for your patience as we continue to make critical improvements to our infrastructure.



[Back to Top](#)

Stopping Pops, Arcs and “Burners” in the Park Avenue Tunnel

Though winter is still a few months off, the damaging effects of salt used during that season have been great where the railroad is concerned.

That's because the salt and water from city streets falls through grates and other openings into the Park Avenue Tunnel, and onto the third rail below, which provides power to our trains.

Once there, the combined water, salt and other material coats the third rail insulators, which conducts electricity.

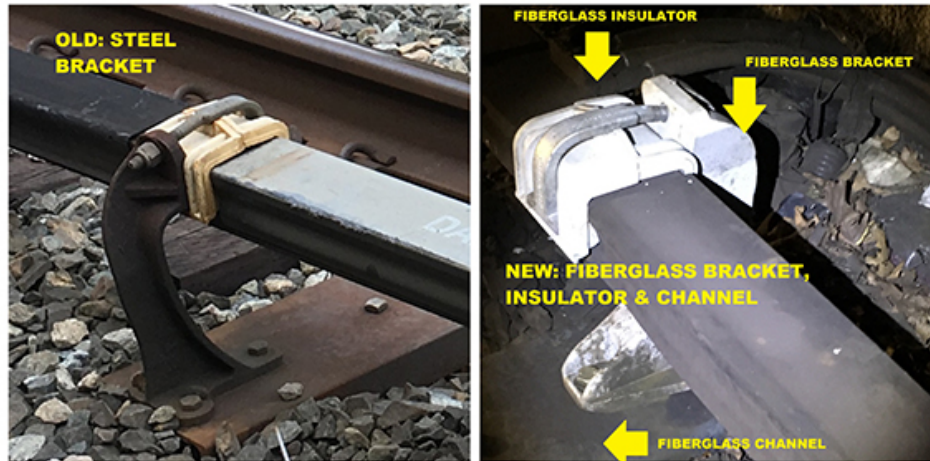
Once the electricity starts to conduct through the rail, the condition is technically called a "high resistance fault," undetectable by our electrical protection system.



In railroad vocabulary, that is called a "burner."

The most common burners can burn through running rail in a short period of time, with the potential to cause safety hazards.

So, our Power department came up with an ingenious solution to dealing with "burner" hazards by installing more electrical insulation around the third rail.



They developed a new fiberglass bracket design, and fiberglass channel design, materials that provide longevity and ample insulation.

Installation started in the 72nd St. to 86th St. stretch of the Park Ave. Tunnel, where the open ventilation grates above create the greatest number of potential mishaps.

That was completed in November 2016, and the remaining stages were completed earlier this year, giving us 'burner' protection on the entire length of the tunnel on all four tracks.

So, though winter is still a few months off, we're happy to report that we've got our rails "covered!"

[Back to Top](#)

Bring it on, Take it off!

When traveling on Metro-North, our customers are welcome to bring their normal carry-ons. And, unlike air travel, there is no charge!

But when you bring your valued possessions with you, we also love that you take them with you when you get off the train.

Bags that stay behind without their owners trigger security protocols that delay trains and inconvenience other passengers.

So please, if you bring it on, take it off!

Unattended bags
delay trains – and you.



Please take all your
personal items with you as
you leave the train.



MTA Metro-North Railroad

[Back to Top](#)

Join Metro-North TRACKS and others in the Walk to Fight Suicide on Saturday, October 13.

**Walk to
Fight Suicide**

Westchester County
Saturday, October 13th
Harbor Island Park, Mamaroneck

Register Today!
afsp.org/westchesterwalk

Register online now!

MTA Metro-North Railroad

TRACKS

Together Railroads And Communities Keeping Safe

www.mta.info/mnr/tracks

Learn more about our program, **Together Railroads and Communities Keeping Safe** (TRACKS)

[Back to Top](#)

Ready to Hit the Grid Iron?

“Big Blue” and “Gang Green” (the Giants and the Jets) are at it again

this September, and you can take Metro-North from your home station to see them! Once at Grand Central Terminal, you can take the subway with a separate MetroCard, using the **7** or **S** and the **1 2 3**: Or you can walk one mile over to Penn Station, about 20 minutes away by foot.



At Penn Station-NY, using your **Train to the Game** ticket, you'll hop on a NJ Transit train to Secaucus Junction. Once in Secaucus, you can take the shuttle train service with your ticket to the Meadowlands.

The Metro-North ticket will cover the rail portions of your ride from your station to GCT, and from Penn Station-NY, to the Meadowlands.

You will need to purchase **MTA Subway fares** separately to get from Grand Central to Penn Station-NY.

Thru-rail tickets are available at outlying stations (not at GCT).

See our special game page for details on this deal, a schedule of football games for the 2018 season, and the dos and don'ts of what to bring to the stadium.

[Back to Top](#)

It's the Time of the Season...

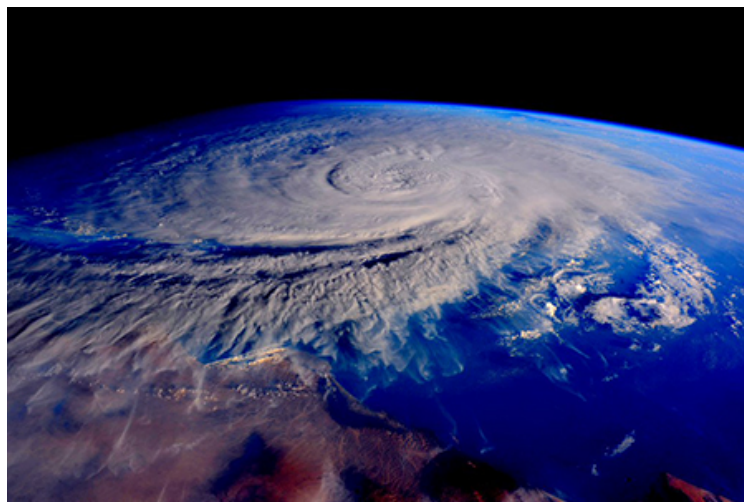
...for Hurricanes.

You've seen the news reports and the damage these storms can do.

We want to remind you that Hurricane Season runs through November 30, with our region being most vulnerable from now through the end of October.

We can't stop the weather's worst from happening, but we can control our team's response to it. In the event of a hurricane or severe storm, we have several operating plans at the ready, depending on the weather's impact.

[Read our Hurricane Season Travel Tips to learn more.](#)



[Back to Top](#)

Safety Rules of the Issue

Use the Designated Walkway.

Please for your safety, use designated pedestrian crossings at all locations: please carry and do not drag large objects over the tracks; and always use look-outs when transporting large objects, so you can be sure that you can see the train before it approaches—and our engineers can see you!

Desperate Times Call for...



'Desperate Measures'

Feeling 'desperate' for a night out on the town?

We've got you covered with our discounted show tickets to experience the award-winning musical, Desperate Measures, 'New York's most hilarious, joyful... musical of the season.'

As **Metro-North customers**, you can save more than 30% on full-priced tickets for performances now through October 28, 2018.

With a cast full of outlandish characters including a mysterious

sheriff, an eccentric priest, and a saloon girl gone good (*sounds like an old episode of 'Maury,' doesn't it?*), you're bound to be entertained.

Purchase tickets through...

- [TelechargeOffers.com](#) and be sure to use **promo code DPLSP45**.
- You can also call 212-947-8844 or
- visit the New World Stages Box Office for discounted tickets.

Getting there is so easy:

Take the [Hudson](#), [Harlem](#) or [New Haven Line](#) to Grand Central Terminal. New World Stages is just a short walk or cab-ride away at 340 West 50th Street.

A 'Gazillion' Reasons to Head Down to the City

Do you have a 'bubbly' personality?

The **Gazillion Bubble Show** will surely make you 'pop' with excitement!

Dubbed the most 'un-bubbleable' show in the world, bubble-lovers young and old (*we know you're out there*) will experience mind-blowing bubble magic, spectacular lighting effects and soapy masterpieces that will leave you feeling like a kid in — you guessed it — a bubble shop.

As **Metro-North customers**, you can save more than 35% on full-priced tickets for performances now through November 18, 2018.



Purchase tickets through...

- [Ticketmaster.com](#) and be sure to use **promo code MNR2018**.
- You can also call 212-947-8844 or
- Visit the New World Stages Box Office for discounted tickets.

Getting there is easy:

Take the [Hudson](#), [Harlem](#) or [New Haven Line](#) to Grand Central Terminal. New World Stages is just a short walk or cab-ride away at 340 West 50th Street.

We can make sure you have something to do every weekend this summer!
See a [complete list of our Getaways](#).

Courtesy Corner



The #MostOftenHeardComplaints on the Railroad

What bothers our riders most about their fellow traveling companions? We took a look at Twitter and this is what we found.

1. #FeetontheSeat

Need to prop up your jamba after a long day at the deli, or trading floor? Please don't! Your fellow passengers find your "#feetontheseat" style offensive, so much so that they may post a pic of you on Facebook, or Tweet it out to hundreds of thousands of #train, #FeetontheSeat-haters!

2. #Playingloudmusic

Some say po-TAY-toe, some say po-TAH-toe, but there is no in between when you blast your favorite LIL PUMP next to the guy jamming to Brahms! Please bring — and use — your headphones to listen to music while riding on the train.

3. #Talkingloudlyonthephone

When you're on the phone in a train car, trust us, everyone can overhear your phone conversations. Do you really want them to hear a heated rehashing of your best friend's bad behavior last night, or be a party to your fantasy plans to "fix" your boss? Please keep your calls short and low — even if you aren't in the Quiet Car®!

4. #Bagspreading

The title says it all! Please put your bags on your lap, under your seat, or in the luggage rack above.

It's the #courteous thing to do!

[Back to Top](#)

Published by
Corporate & Public Affairs, MTA Metro-North Railroad
420 Lexington Avenue, New York, NY 10170

www.mta.info

[Mileposts Archive](#)