

MILEPOSTS

A Newsletter for MTA Metro-North Railroad Customers

May-June 2020

- [Thank You Essential Employees](#) ■ [Keeping in Contact](#) ■
- [TRACKS Program](#) ■ [Social Distance](#) ■ [GCT Rules!](#) ■ [Safety Rule](#) ■
- [Courtesy Corner](#) ■ [Getaways](#) ■

“Thank-You” to Metro-North Essential Workers

At the April 22 [Metro-North and LIRR virtual board meeting](#) local and state elected officials and representatives took the time to virtually thank Metro-North essential personnel who have been coming to work every day since the COVID-19 pandemic struck.

“...Even during these times, there are people who work to sustain hope, create access and provide relief to those who need them on the job. That certainly describes our dedicated MTA employees, who ensure that our mass transit system keeps running despite this pandemic.”

– **Andrea Stewart-Cousins, NYS Majority Leader**

“Thank you to all the MTA workers on the frontlines who are continuing to keep our system moving in these difficult times. You put yourselves at risk day after day for the benefit of our communities,”

– **Carl Heastie, Speaker, New York State Assembly.**

“I really just wanted to thank all of the MTA workers and employees that are out there providing essential services every day. We cannot thank you enough.”

– **Leroy Comrie, NYS Senator & Chair, Senate Committee on Corporations, Authorities & Commissions:**

“Thank you [MTA employees] for what you’re doing out there on the frontlines. You epitomize what it means to be ‘New York Tough.’ You are the strength and backbone of New York.”

– **Timothy M. Kennedy, NYS Senator & Chair, Senate Transportation Committee**

“I really wanted to take a moment this morning to thank the workers on the subways, buses, Metro-North, LIRR... making sure that health care workers and first responders can get to work,”

– **Amy Paulin, NYS Assembly Member & Chair, Assembly Committee on Corporations, Authorities & Commissions.**

“I want to start by thanking everybody who’s out there each and every day during this horrible time. Whether it’s people driving buses or trains or working in the system, keeping it clean, keeping it disinfected, keeping it safe.”

– **Jeffery Dinowitz, New York State Assembly Member**

Also making comments and thanking our essential workers were Lisa Daglian, Executive Director, Permanent Citizens Advisory Committee to the MTA, and Francena Amparo, Metro-North Railroad Commuter Council.

You can watch the [Metro-North and LIRR May Virtual Board Meeting](#) online.



[Back to Top](#)

Distance Friendship



As reported in the [Riverdale Press](#), on May 3, Metro-North Conductor **Paul Kempner** developed a friendship with frequent rider Muriel Kessler, a lawyer in her 90s, who up until recently, was still commuting to Midtown on the Hudson Line.

But since the coronavirus pandemic started, however, Kessler has stayed home, but she still maintains a friendly conversation with Kempner over text message.



Monday, March 9, 2020

M Hi Paul, I am working at home [today](#). My family wants me to stay home this week. I will see. Please take care of yourself. Stay well. See you soon.



Muriel 10:50 AM

For now, that is the best thing you can do under these circumstances. You will be missed. You also, stay well..

12:44 PM

M Paul, So glad to hear from you Please be well. I hope to see you very soon I miss you. The train 🚆 ride just ain't the same with out you. Please come back soon. The boys are fine, but could never replace special Paul.

YOU DA BEST!



4:33 PM



[Back to Top](#)

Metro-North Offering Virtual TRACKS Safety Program

Your school can download a pre-recorded slide show or safety presentation...

...that teachers can use to present to children virtually, so they can learn how to act safely around railroad tracks.

Our virtual **TRACKS (Together Railroads and Communities Keeping Safe)**, presentations include either a 20 to 30-minute slide show on rail safety, or a pre-recorded safety presentation which



can be emailed to teachers along with a short educational rail safety video.

Email MNRTTracks@mnr.org for more info.

You can also download our TRACKS learning tools for your children while they are studying from home. [Download our special TRACKS coloring book](#). Or, download a special copy of our [TRACKS passport](#) for children only. Children can pretend they are conductors and customers on the train, and have their passport stamped for their travel.

IF YOU GET TO A CROSSING, REMEMBER THESE THREE THINGS; STOP, LOOK, AND LISTEN! A TRAIN CAN COME AT ANY TIME IN EITHER DIRECTION. MAKE SURE YOU WAIT UNTIL THE GATE IS FULLY UP AND THE LIGHTS HAVE STOPPED FLASHING.



[Back to Top](#)

Social Distancing: Please Keep 6-foot Away from Others

in Stations, on Platforms, on Trains, and at Grand Central Terminal



[Back to Top](#)

New Rules and Regulations on Metro-North Property, Effective April 29.



New Amended Rules of Conduct went into effect on April 29 that cover allowable behavior while in Metro-North stations, platforms, trains and at Grand Central Terminal.

For your enjoyment and safety, and that of others, the following are enforceable Rules of Conduct:

- Seating is limited to no more than 90 minutes at tables, benches, chairs or other furniture in the public areas.
- Lying on tables, benches, chairs, counters, floors, landings, platforms or other furniture is not permitted.
- Sitting on platforms, stairs, tables, counters or landings is not permitted.
- Smoking — including e-cigarettes — is prohibited in the Terminal, platforms and trains.
- Consumption of alcoholic beverages or carrying open alcoholic beverage containers is prohibited between 5:00 AM and 11:30 AM in all public areas.
- Do not occupy more than one seat.
- Do not block the movement of another person or persons.
- Do not create any unreasonable noise.
- Commercial activity is not allowed without a permit or proper authorization.

- Persons must remain dressed at all times, including footwear.
- Do not litter or rummage in trash receptacles or remove any items from trash receptacles.
- Wheeled carts greater than 30 inches in width or length are prohibited except for authorized deliveries and strollers with children.
- Performing any act that interferes with the provision of transportation service, obstructs the flow of traffic in or on facilities, platforms or conveyances, interferes with access onto or off of an escalator, stairway, elevator or train, or otherwise interferes with the safe and efficient operation of the facilities is strictly prohibited.






Violation of these Rules of Conduct shall constitute an offense punishable by a fine or imprisonment or both. Persons not abiding by these Rules of Conduct may be removed from the premises. 21 NYCRR Part 1085.

[Back to Top](#)

Safety Rule of the Issue

Please acquaint yourself with these on-board train emergency and evacuation instructions. See a complete [description of how to evacuate a train in an emergency](#).

Evacuation Instructions

				
Listen for directions from authorized personnel.	Remain inside train if possible. If not...	Go to next car through end doors. If unable...	Open side door and go out. If unable...	Go out emergency windows.

[Back to Top](#)

Courtesy Corner



Safe Travels

Keep them covered.

 Cover your nose and mouth with a mask or cloth when you ride.

Stop the spread. Save lives. 

It's the courteous (and healthy) thing to do!

[Back to Top](#)

Metro-North Getaways: We Deliver!

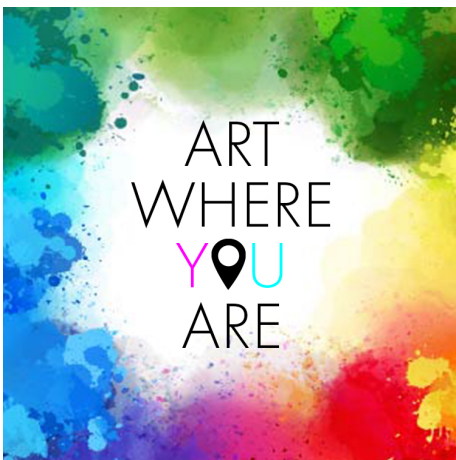
Who says you can't have your cake and eat it too?

You and your family can stay home *and* travel the universe with Metro-North's virtual getaways! Here is your chance to experience all of these destinations – right from the safety of your own couch!

Westchester Children's Museum

Even though you can't visit the [Westchester Children's Museum](#) in person, their home page brings the museum home to you!

Every week they post new activities with videos on how to do them at home.



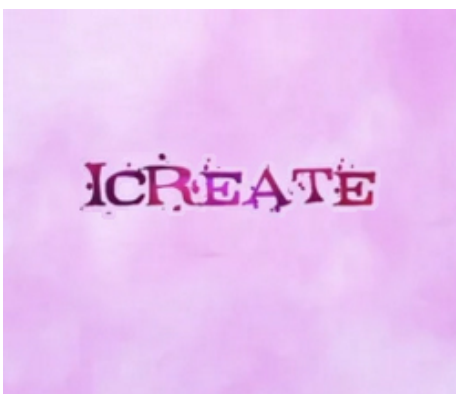
The Katonah Museum of Art

One of Metro-North's most popular getaways on the [Harlem Line](#), now comes to you.

[The Katonah Museum of Art](#) is now more accessible than ever with their [Art Where You Are](#) virtual hands-on art [workshops](#).

Hudson River Museum

Explore the stars and the galaxies with [Hudson River Museum's](#) Planetarium Manager Marc Taylor.



Bruce Museum

Metro-North is happy to help the [Bruce Museum](#) spotlight the creative energy and vitality of fine art created by regional high school students in the [10th annual iCreate exhibition](#).

[Back to Top](#)

MilePosts Archive