



Safe Working

**Scan
for your
COVID-19
test here**



Testing done in coordination with the Mount Sinai Health System.



Safe Working

Registration Instructions

HOW TO REGISTER

To register for the saliva-based COVID-19 Testing program, scan the QR code on our registration signage or go to mapterial.com/mta-covid, then log in.

HOW TO LOG IN

Your username is your BSC ID. Your password is the first letters of your first and last name (in lowercase), your date of birth in the following format: MMDDYY, and lastly, @MTA. Example: June 12, 1990 would be entered as 061290.

Example Password for Jane Doe born June 12, 1990 with BSCID 173623

Your BSC ID ↓ 173623	Username 173623
Your 2 initials ↓ jd 061290 @MTA ↑ Your date of birth as MMDDYY	Password jd061290@MTA

PROVIDING CONSENT

Once you have successfully logged in, you will be asked to consent to participating in the saliva-based COVID-19 testing program. Once consent has been provided, you will be given an option and instructions to use your smartphone to use a provided Dropbox.

I DO NOT HAVE A SMARTPHONE

If you do not have a smartphone, tablets will be provided. Upon providing consent, you will receive a QR Code on the tablet that you will present to an onsite Collection Specialist who will collect your sample.



Testing done in coordination with the Mount Sinai Health System.



Safe Working

Saliva Testing Instructions



For a successful test, your saliva must be clear, free of food and mucus, and cannot contain residues such as those from brushing your teeth or smoking.

In the hour before your test, please do not:

- **Eat or drink anything, including water**
- **Brush or floss your teeth, or use mouthwash**
- **Smoke or chew gum**



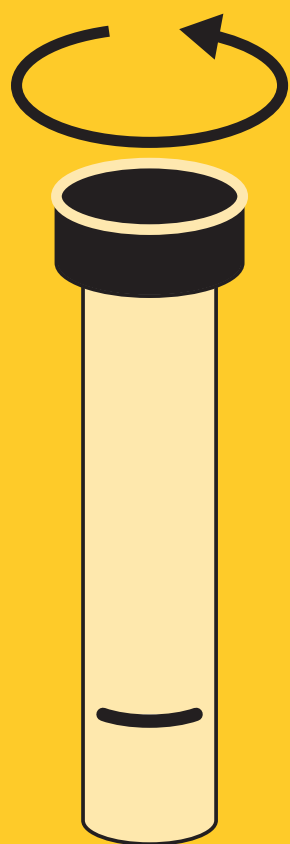
Testing done in coordination with the Mount Sinai Health System.



Safe Working

Saliva Testing Instructions

1



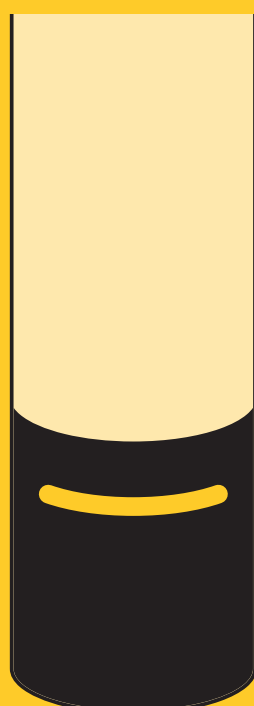
Remove tube cover.

2



Pool saliva in mouth then spit into tube until it reaches at least 2 ml. Repeat as many times as needed to reach that mark on the tube.

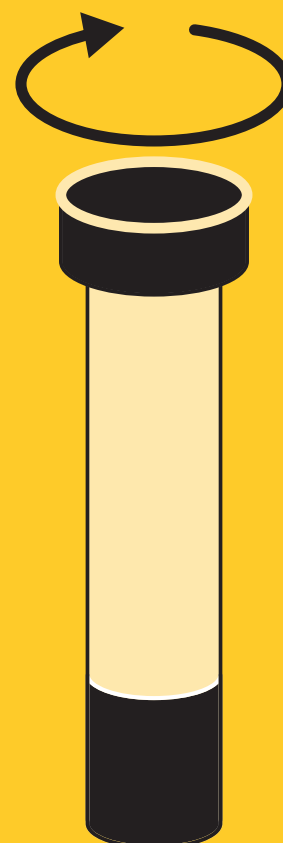
3



← 2 ml.

Make sure the amount of saliva reaches at least 2 ml.

4



Tightly close the cover on the tube. Do not reopen the tube and try to add more saliva.



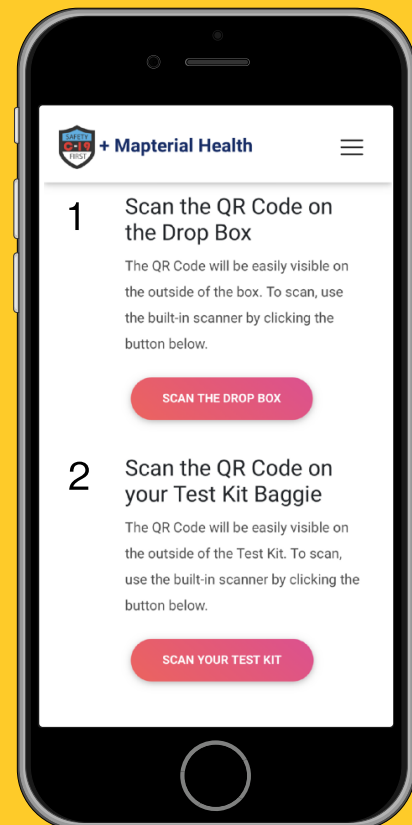
Safe Working

Using the Dropbox

SETTING UP YOUR ACCOUNT FOR FASTER DROP-OFFS

- 👍 Be sure to check **Remember Me** at the log in screen (Cookies MUST be activated)
- 👍 Use your phone's camera to scan the QR Code on the dropbox
- 👍 You will see the following screen with the 2 short steps

- 1** Scan the QR Code on the box again, this time using the scanner by clicking **SCAN THE DROP BOX.**
 - 2** Scan the QR Code on your test kit by clicking **SCAN YOUR TEST KIT.**
- DROP TEST KIT IN THE BOX.**



Testing done in coordination with the Mount Sinai Health System.