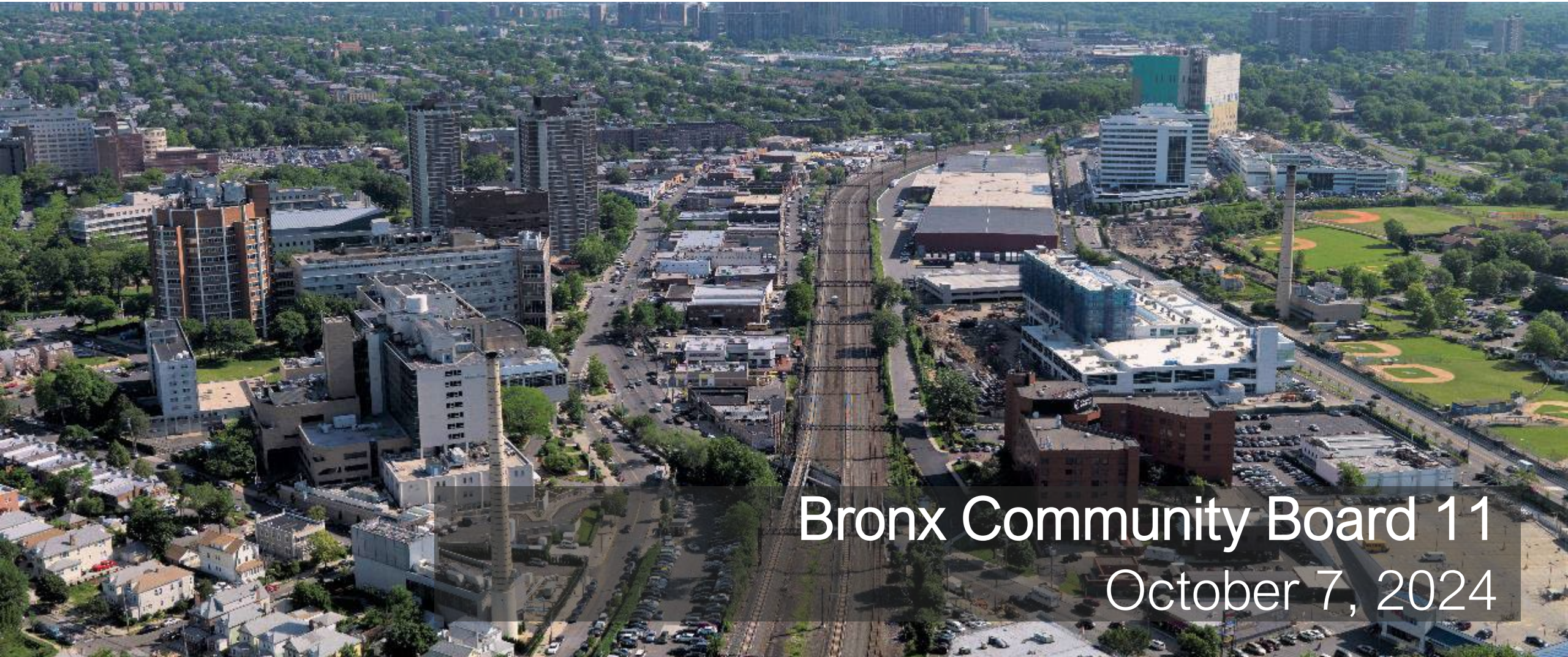




Penn Station Access



Metropolitan Transportation Authority
Construction & Development
Metro-North Railroad



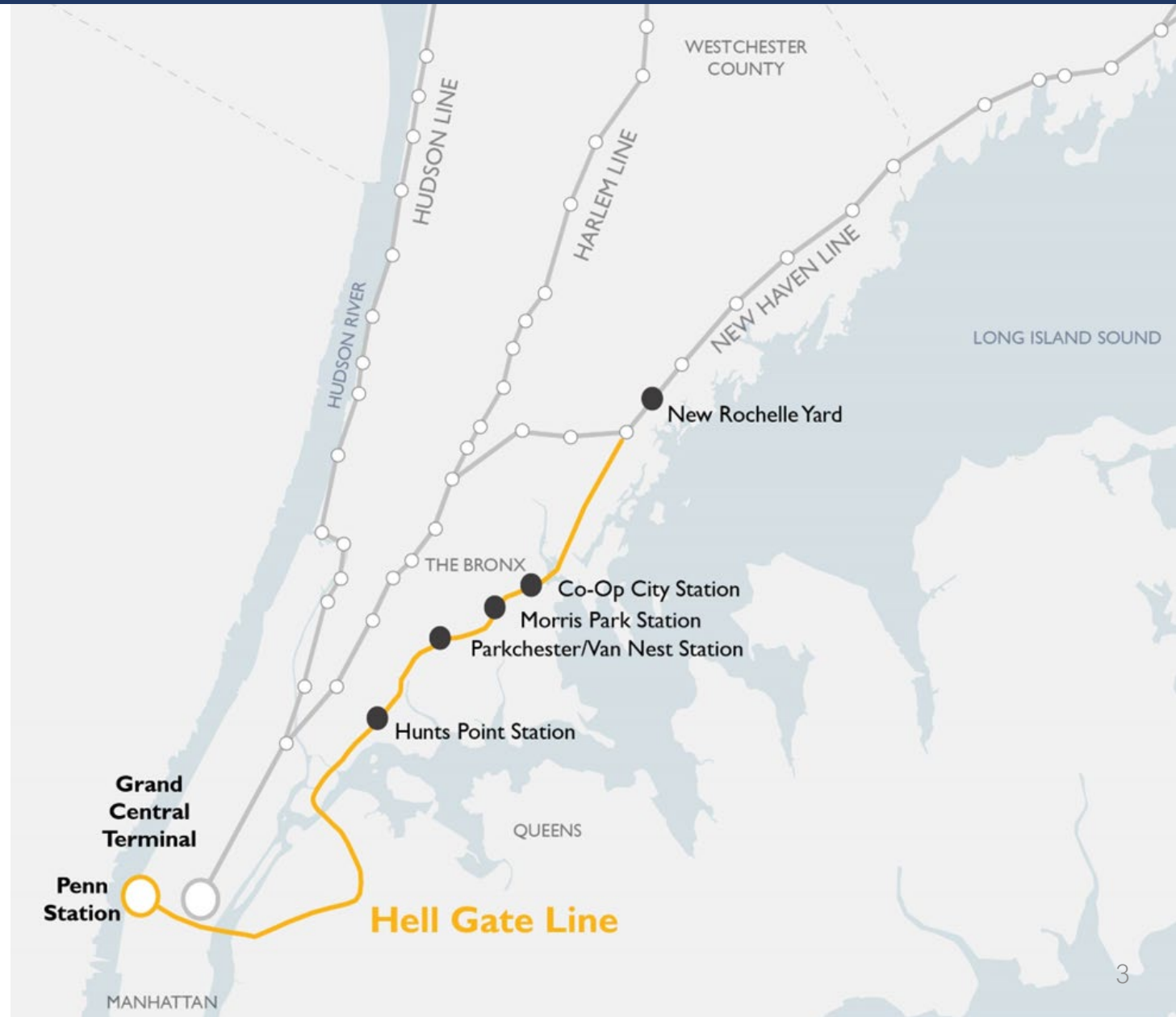
Bronx Community Board 11
October 7, 2024

Agenda

- Project Overview
- Project Progress
- Upcoming Work
- Community Engagement
- Contact Us
- Q&A

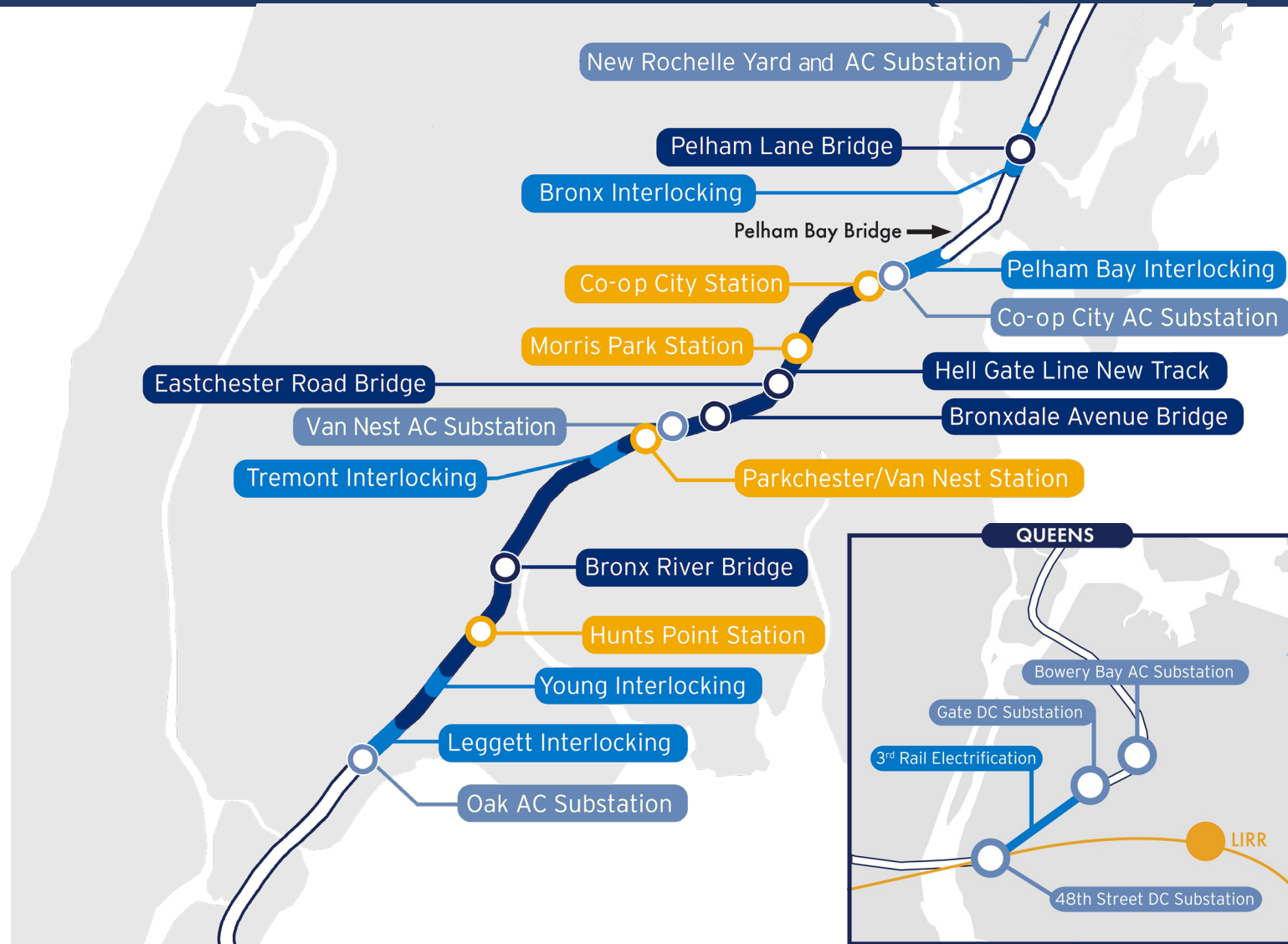
Project Overview

- New Metro-North rail service to and from Penn Station
- 4 new ADA stations in the Bronx; reduce commutes to Midtown up to 50 minutes each way
- Regional transportation connectivity



Project Overview

- Upgrade Amtrak's Hell Gate Line to a state of good repair:
 - 19 miles of track work
 - 4 new interlockings
 - 1 reconfigured interlocking
 - 5 new substations
 - 2 upgraded substations
 - 4 bridge rehabilitations
 - New drainage infrastructure
 - New Rochelle Yard expansion



Overall Project Benefits



Faster Travel Times

Improves access to underserved neighborhoods and gets you to your destination faster



Economic Vitality

Supports the local and regional economy



Connected Communities

Connects you to several neighborhoods in the Bronx and throughout the region



Sustainable Infrastructure

Encourages drivers to switch to train travel, reducing traffic congestion and improving air quality



Reverse Commuting Opportunities

Attracts new talent and broadens the job market



Optimization of Existing Infrastructure

Delivers cost-effective transit solutions



Regional Transportation Connectivity

Expands your travel opportunities



Enhanced Network Reliability

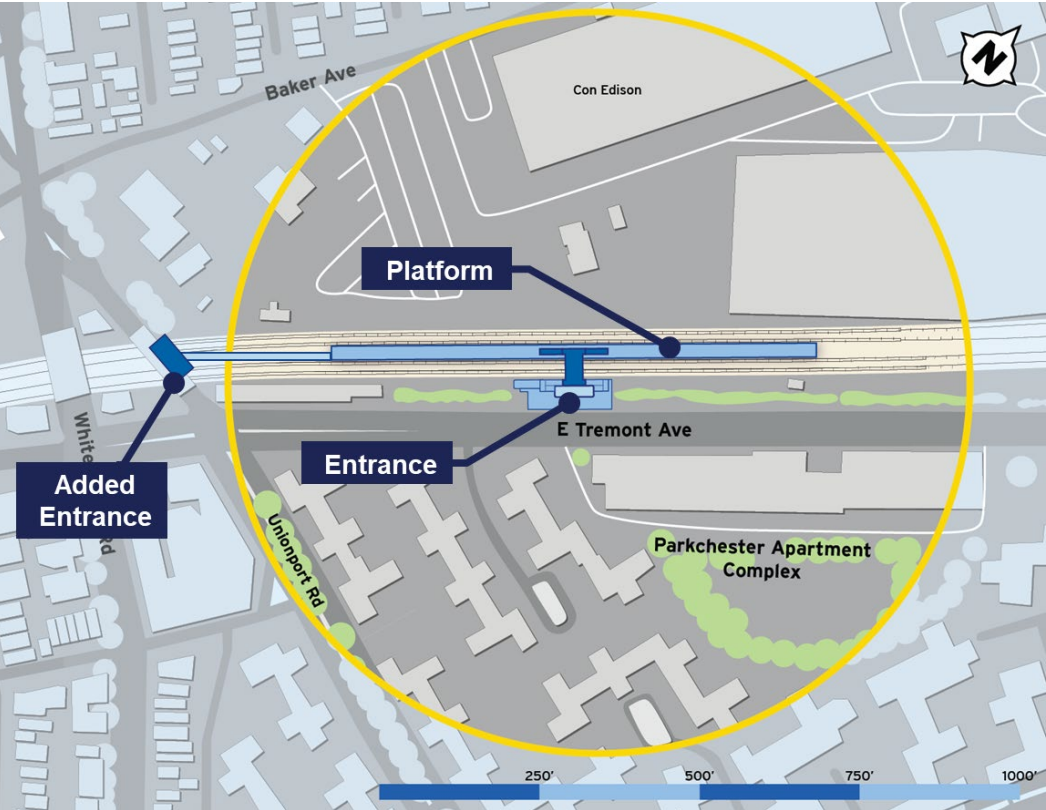
Provides flexibility for Metro-North and improves on-time performance for intercity passengers

Amtrak and Freight Railroad Benefits

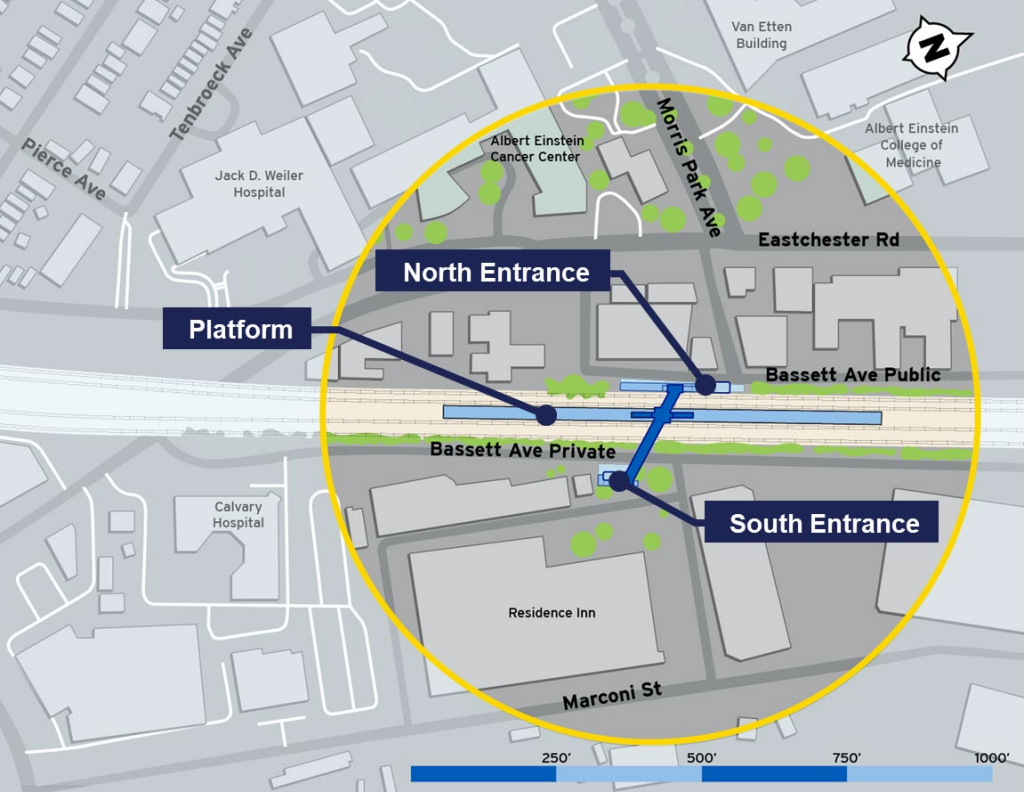
- Improves on-time performance and reliability for intercity passengers
- Brings Amtrak's Hell Gate Line to a state of good repair, including:
 - Hell Gate Line catenary system
 - 100+ year old bridge structures
- Electrical upgrades, improved signal system, and state-of-the-art communication system
- Significant enhancements to stormwater management including new drainage



Parkchester/Van Nest Station Conceptual Site Plan & Rendering



Morris Park Station Conceptual Site Plan & Rendering



Project Progress

- Bridge Rehabilitations
- Overhead Catenary Structures (OCS)
- Substations
- Station Areas
- Leggett Interlocking

Bridge Rehabilitation

- 100+ year old aging infrastructure
- Span-by-span approach to avoid service impacts

- West, east, and center wall and footing construction complete

Pelham Lane Bridge

To New Haven



New walls and footings at Pelham Ln Bridge, July 2024

Eastchester Road Bridge

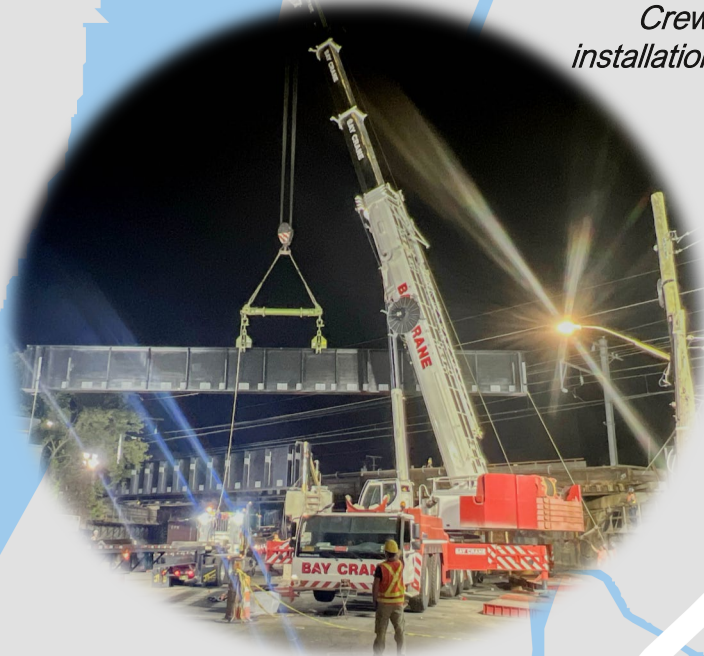
Bronxdale Avenue Bridge

- New center pier construction complete
- Main girders for Track 2 and 4 complete
- Intermittent lane closures throughout construction

Crews complete new steel installation at Bronxdale Ave Bridge, August 2024

Bronx River Bridge

- East abutment backwall demolition complete
- Drainage installation underway

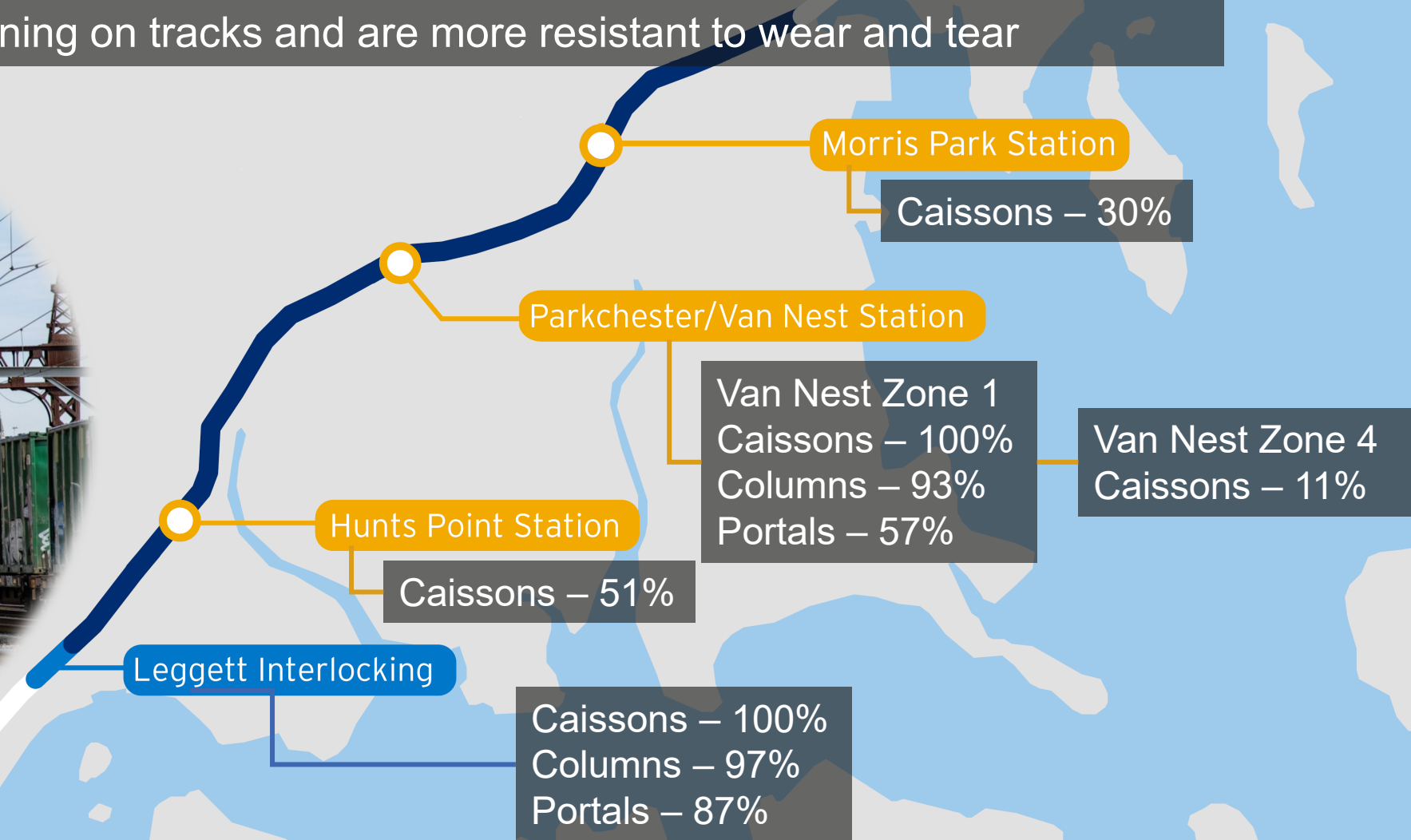


Overhead Catenary Structures (OCS)

- 100+ year old infrastructure with insufficient capacity for increased service
- New galvanized steel structures and new wire with full tension air breaks can accommodate increased number of trains running on tracks and are more resistant to wear and tear



New and old catenary structures at Leggett Interlocking, January 2024



Substations

- Increasing capacity to meet additional demand from new service
- Enhancing service reliability and climate resiliency

Site preparations and foundations underway



Site preparations underway near Van Nest Substation, July 2024

Van Nest AC Substation

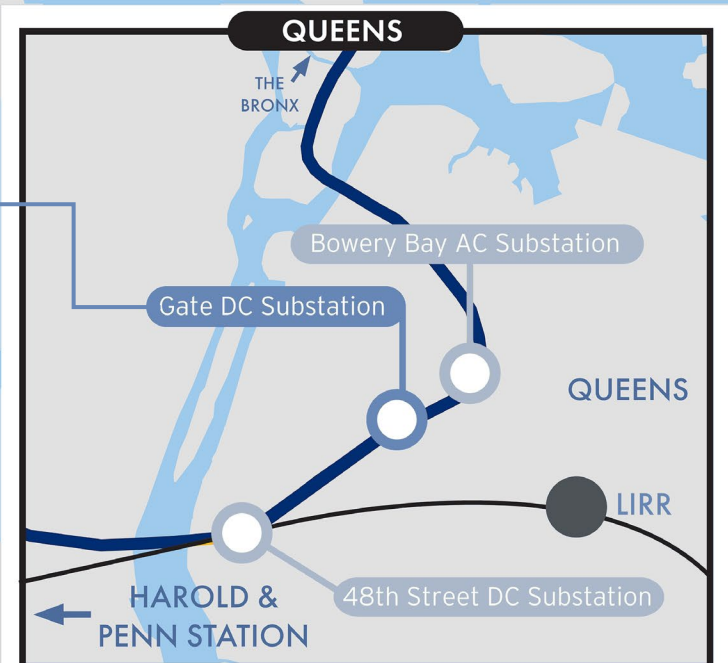
- HG-01 foundation slabs complete
- Drainage structure – 17% complete

Oak AC Substation

Co-op City AC Substation

Caissons – 94% Complete

New Rochelle AC Substation



Station Areas

- Foundation work has commenced at all 4 stations

- Concrete poured for boiler-room and retaining wall
- West entrance minipiles – 50% complete

- North entrance minipiles – 69% complete
- North entrance rebar and concrete foundation in progress

Co-op City Station

Morris Park Station

Parkchester/Van Nest Station

- Main entrance micropiles – 79% complete

Hunts Point Station

- North & south entrance rebar and concrete foundations in progress



Site preparations at Morris Park Station Site, August 2024



Site preparations at Parkchester/ Van Nest Station Site, August 2024

Leggett Interlocking

- Increased operational flexibility
- Enables extended track outages during construction
 - “Permanent LTO”



*OCS portal installation near Leggett Interlocking,
October 2023*



*Track foundation concrete installation
near Leggett Interlocking,
June 2024*

Leggett Interlocking

- Drainage outlet pipe – 100% installed
- Drainage structure - 87% complete

Installed new ties, tracks, and interlocking components at Track 1 and 2

Signal, communication, testing and commissioning work ongoing

Upcoming Work

- Bridges
- Power System Upgrades
- Station Areas
- Leggett Interlocking

Upcoming Work – Bridges

Bronxdale Avenue Bridge

- Install structural steel and deck plates for Tracks 2 & 4

Eastchester Road Bridge

- Phase II to commence Q4 2025

Pelham Lane Bridge

- Continue demolition and lead abatement
- Continue signal tray and conduit installation
- New steel installation to commence Q4 2025

Bronx River Bridge

- Pour concrete for new center pier
- Install framework and rebar for east abutment

For details on intermittent lane closures, please visit our website: new.mta.info/project/penn-station-access



Crews install abutment footings at Pelham Lane Bridge, April 2024



Crews install abutment footings at Pelham Lane Bridge, July 2024

Upcoming Work – Power System Upgrades

Hunts Point

- Continue OCS caisson installation

Parkchester / Van Nest

- Continue OCS column installation
- Continue OCS portal installation

Morris Park

- Continue OCS caisson installation

Parkchester / Van Nest Substation

- Commence caisson installation

Co-op City Substation

- Complete caisson installation
- Pour foundation slab

HG Substation

- Continue drainage installation



New and existing portals at Parkchester/Van Nest Station, July 2024

Upcoming Work – Station Areas

Hunts Point

- Continue to form rebar and pour concrete for south entrance foundation

Parkchester / Van Nest

- Complete micropile installation for main entrance
- Form rebar and pour concrete for main entrance foundation

Morris Park

- Continue retaining wall installation
- Progress south entrance utility work

Co-op City

- Continue to form rebar and pour concrete for main entrance foundation
- Continue track-side minipile installation



Crews drill micropiles at Hunts Point Station site north entrance, May 2024



Installed concrete and rebar at Hunts Point north entrance, August 2024

Upcoming Work – Leggett Interlocking

Track and Supporting Infrastructure

- Complete OCS portal installation
- Complete drainage system installation
- Reprofile Track 1 and 2 catenary wires
- Install Track 1 and 2 crossovers



Completed portal near Leggett Interlocking, February 2024

Commissioning of Leggett Interlocking – Q4 2024



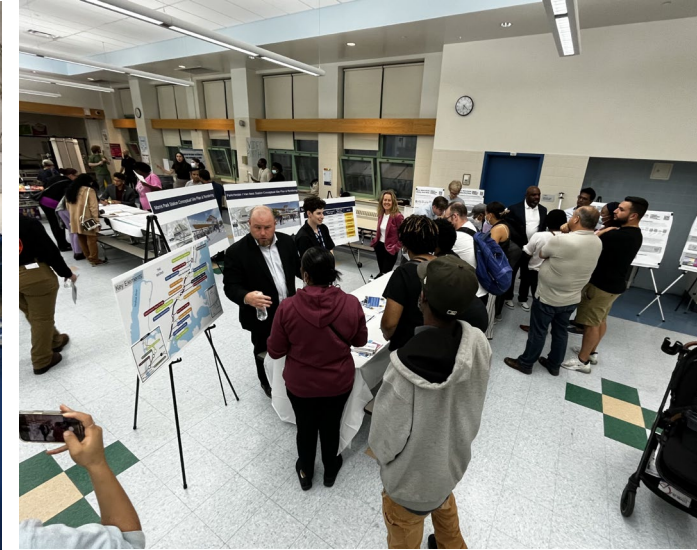
Factory test of fabricated railroad crossovers and switches at Voestalpine Railway Systems Nortrak facility in Birmingham, Alabama, August 2022

Community Engagements

- Community Engagements
- Stay Up to Date

Community Engagements

- Environmental Assessment: Virtual Public Meeting
- MTA Arts & Design Selection Panel: Co-op City, Morris Park, Parkchester, Hunts Point
- MTA Job Information Event
- Bronx-Westchester Community Council
- Center for Bronx Non-Profits
- Bronx Community Boards 2, 9, 10, and 11
- PSA / steMTA Program in local schools



Community Engagements

- Co-op City Section 5 Public Information Session
- Hunts Point EDC Spring Mingle
- Bronx Chamber of Commerce
- Hunts Point-Longwood Community Coalition
- Four DCP Bronx Metro-North Study Workshops
- Bronx EDC
- New York Metropolitan Transportation Council

Upcoming:

- Bronx Community Boards 2, 9, 10, and 11
- PSA/steMTA Program in local schools
- Ongoing local job events and hiring fairs
- Ongoing local Stakeholder Meetings



Stay Informed



Telephone Hotline: [347-263-7837](tel:347-263-7837)



Email: PSAOutreach@mtacd.org



Sign-up for updates and newsletters on the website



Project Webpage: <https://new.mta.info/project/penn-station-access>



An aerial photograph of a city, likely New York City, showing a dense urban landscape with numerous buildings, streets, and a large body of water in the background. A semi-transparent white box with a thin black border is centered over the image, containing the text "Thank You Questions?".

Thank You
Questions?