



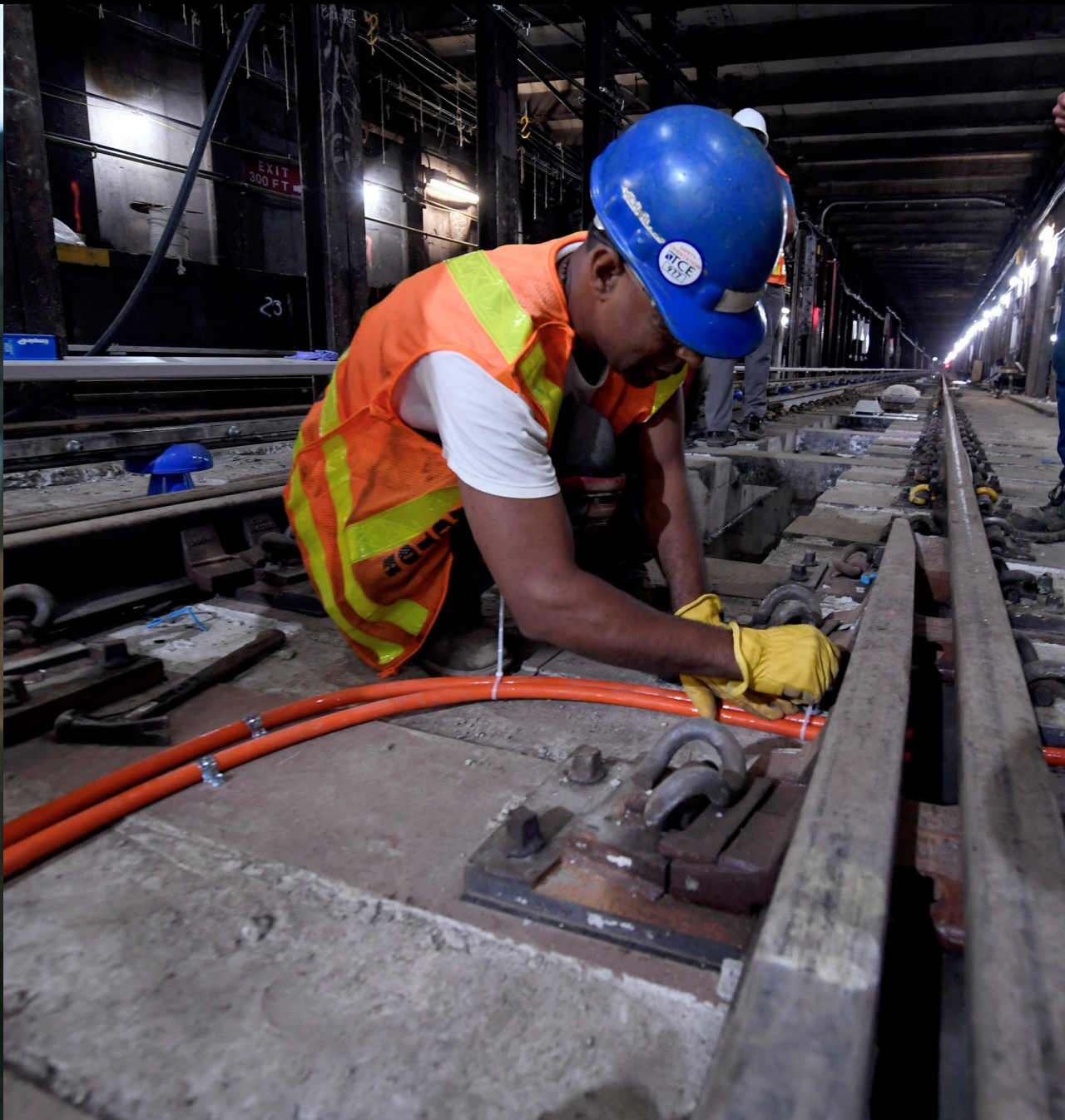
# MTA Board Meeting

September 25, 2024





# 2025-2029 Capital Plan



Model G Train Project Sets a New Standard



# Replicating G Train Success on the A Line



# 14 St Subway Station

L



## Uptown & Queens

F M

EL 611

14 ST UPTWN  
F M  
L

Retail For Lease  
212.984.6600  
Kristen Crossman David LaParra

ELEVATOR EL-611

FOR FIRE  
EMERGENCY USE ONLY

ELEVATOR  
OPERATION  
INSTRUCTIONS

CALL  
FOR  
HELP

CALL  
FOR  
HELP

IN CASE OF  
FIRE  
DO NOT USE  
ELEVATORS  
EXIT VIA STAIRS

Please let  
people with  
disabilities  
and seniors  
board first.

**Alternate Accessible  
Travel Information**

If this elevator is out of service:

- For MTA service, take a Lower East Side-bound M14A or M14D bus to Irving Pl. Then, cross 14 St and use the elevator entrance to 14 St Union Sq Station.
- For MTA service, proceed to 15 St and board a M14A-147 St-bound M14 bus or go to 16 St and board a M14A-147 St-bound M14 bus. Then, take either bus to 24 St Herald Sq Station.

Subway and bus services may vary by time of day. For the most updated equipment status, or for more information on out of service, use the MTA app or visit the MTA website.

For the most updated equipment status, or for more information on out of service, use the MTA app or visit the MTA website.

Include the elevator number: EL-611  
Street level at 14 St St.

14 St F/M/L Upgrades ✓

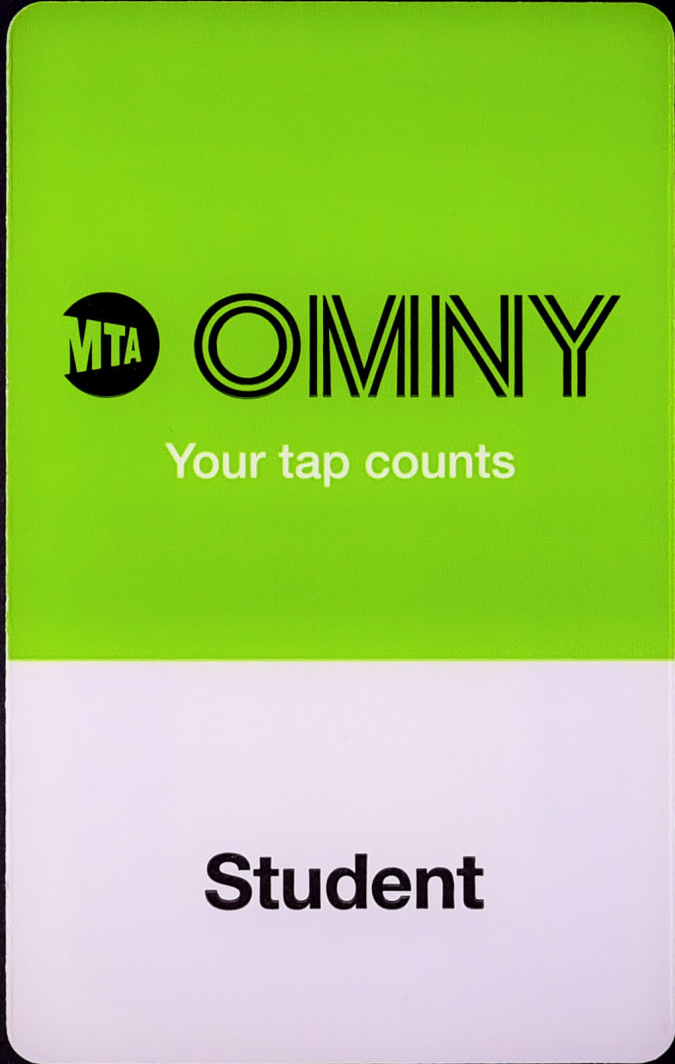




LIRR Babylon Station Renovation ✓



42 St Shuttle 5G Cell Service ✓



Student OMNY Cards ✓





The image shows a Microsoft Excel spreadsheet titled "MTA Open Data Update". The spreadsheet is viewed from an angle, showing the keyboard and mouse in the foreground. The data is organized into columns and rows, with a clear header section for "Ridership Comparison" and "% Change".

Ridership Comparison						% Change				
Date	Subway	SIR	YCT Bus	MTA Bus	Past Total	Subway Change	SIR Change	YCT Bus Change	MTA Bus Change	Total Change
Thursday, January 3, 2019	5269422	1759419	395310	7424151		-4.97%		-14.18%	-10.76%	-13.55%
Friday, January 4, 2019	5269888	1759415	389766	7412167		-5.12%		-9.34%	-9.11%	-9.30%
Saturday, January 5, 2019	2579596	958655	193612	3731863		9.10%		2.91%	3.00%	2.92%
Sunday, January 6, 2019	5156621	1741075	386012	7283708		3.43%		-5.02%	-4.35%	-4.91%
Monday, January 7, 2019	5286130	1774117	392460	7452707		1.67%		-1.61%	-1.58%	-1.61%
Tuesday, January 8, 2019	5402057	1817824	398854	7618735		2.43%		-0.76%	-0.30%	-0.67%
Wednesday, January 9, 2019	5407260	1779142	392754	7579156		0.66%		-3.69%	-0.30%	-0.67%
Thursday, January 10, 2019	5307182	1779142	392754	7579156		1.26%		-2.90%	-1.84%	-3.36%
Friday, January 11, 2019	2716521	1007883	203255	3927659		2.77%		2.86%	-2.24%	-2.78%
Saturday, January 12, 2019	2079594	770031	152486	3002111		10.67%		7.20%	1.79%	2.66%
Sunday, January 13, 2019	5164883	1734584	387925	7287372		10.20%		7.59%	9.33%	7.56%
Monday, January 14, 2019	5375819	1808430	397339	7581588		1.00%		7.59%	8.74%	7.78%
Tuesday, January 15, 2019	5432094	1831507	398158	7661759		0.79%		2.55%	0.14%	2.11%
Wednesday, January 16, 2019	5461570	1818022	400223	7679815		1.48%		-1.60%	-1.14%	-1.51%
Thursday, January 17, 2019	5178392	1712176	374678	7265246		1.06%		-0.15%	0.88%	0.88%
Friday, January 18, 2019	2682468	964060	198533	3845061		3.15%		-3.10%	-2.80%	-3.04%
Saturday, January 19, 2019	1885180	639502	127279	2651961		-3.34%		-2.58%	-2.61%	-3.04%
Sunday, January 20, 2019	2475885	731924	166073	3373882		21.02%		-12.76%	-2.61%	-12.70%
Monday, January 21, 2019	5110298	1591630	356984	7058912		4.08%		23.66%	-12.42%	-2.59%
Tuesday, January 22, 2019	5306176	1751801	380200	7438177		28.80%		46.94%	20.69%	23.17%
Wednesday, January 23, 2019	5181197	1598513	350561	7130271		2.12%		7.05%	38.42%	23.17%
Thursday, January 24, 2019	5381266	1731942	373787	7486995		5.19%		7.05%	38.42%	23.17%
Friday, January 25, 2019	2853107	1040536	211007	4104650		-0.83%		-0.02%	4.17%	45.36%
Saturday, January 26, 2019	5266080	1758485	164038	3189994		-8.73%		9.33%	0.46%	6.52%
Sunday, January 27, 2019	5489907	1809906	398970	7697783		5.89%		-1.76%	8.84%	0.06%
Monday, January 28, 2019	4867493	1670239	368682	7393076		-0.20%		-18.23%	-1.83%	9.24%
Tuesday, January 29, 2019	5354155	1350152	305328	6522973		1.71%		0.86%	-14.69%	-1.77%
Wednesday, January 30, 2019	4967493	1634852	363007	7265690		5.18%		1.05%	-2.70%	1.35%
Thursday, January 31, 2019	5267821					15.92%		9.26%	1.33%	-2.23%
Friday, February 1, 2019						2.49%		33.09%	9.84%	1.10%

# MTA Open Data Update



Take Transit on Gridlock Alert Days



UN WEEK SEPT 22-29  
GRIDLOCK DELAYS  
USE MASS TRANSIT

PREMIER AVAILA  
6,600 RSF  
24

Take Transit on Gridlock Alert Days



Welcome, Chief Kemper