

Rockaway Line Resiliency & Rehabilitation


Project Update
Presentation to
Public Stakeholders

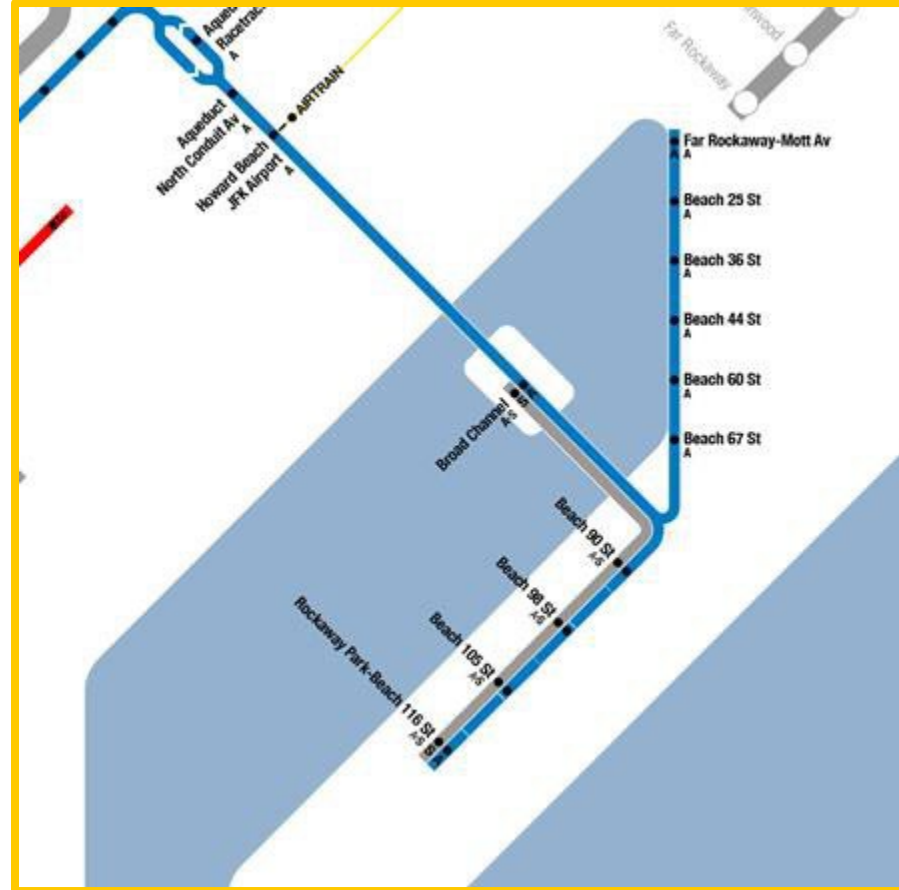
Fall 2024



Project Purpose:

Rockaway Line Critical to Community

- The Rockaway Line  is the critical connection between the Rockaway Peninsula and the rest of New York City
- Connects a diverse population of close to 125,000, providing a vital link for Rockaway residents, businesses, and commuters
- Serves nearly 10,000 daily riders



Rockaway Line Rehabilitation and Resilience Needs

The Rockaway Line **A** **S** needs **resilience** upgrades to address increased vulnerability to climate change and structural **rehabilitation** to safeguard aging infrastructure

- **Resilience:** After Superstorm Sandy, service was suspended for 7 months; while key work has been done, climate change has only accelerated deterioration
- **Rehabilitation:** The 65+ year old structures along the line are in need of major rehabilitation to address structural flaws



MTA Investments in the Rockaways

The MTA has made significant investments to address these needs since Superstorm Sandy

Emergency Restoration Work – 2013; \$84M

Restored the washed-out right-of-way, started resiliency upgrades and installation of sheet pile wall in the flats

Hammels Wye Campus Flood Mitigation – 2019; \$27M

Flood-hardened and protected the substation, signal tower, meter room, relay room, and compressor facility

Station Flood-Hardening – 2020; \$17M

Flood-hardened to protect communications and signal equipment at key stations

Rockaway Repairs Wrap-up – 2024; \$50M

Repairs to the North Channel Bridge piers and communications resiliency upgrades

The Rockaway Line Resiliency and Rehabilitation Project continues to build upon previous work towards resiliency and reliability upgrades through an investment of \$393M





Project Overview:

Rockaway Line Resiliency & Rehabilitation

Contract Start:

Dec 29, 2022

Duration:

44 months

Substantial Completion:

3rd Quarter 2026



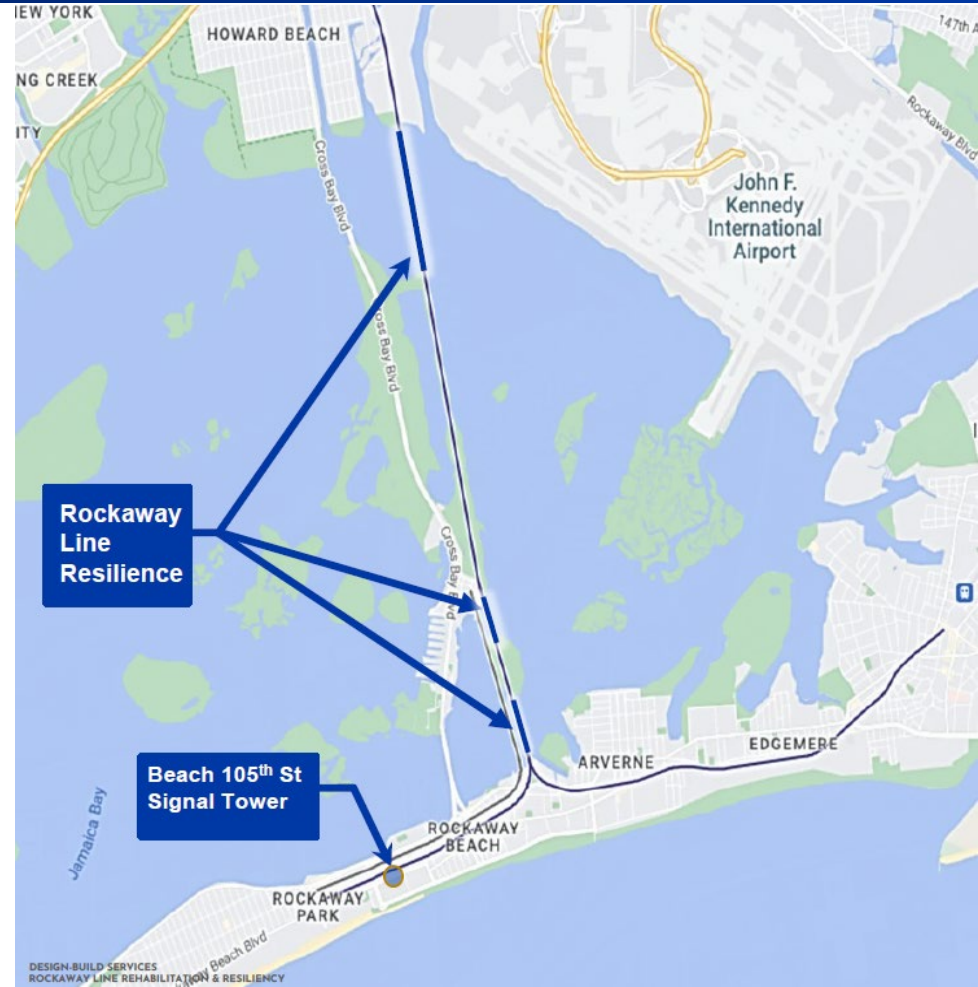
Resilience

Rockaway Line

- Protection of embankments and hardening of critical infrastructure at stations

Beach 105th St Signal Tower

- New signal tower, compressor plant, and track crossover, adds redundancy in the system



Rehabilitation

Hammels Wye Viaduct

- Replacement of viaduct superstructures

Rockaway Viaduct

- Component repairs to address structural deterioration in viaduct structure

South Channel Bridge

- Replacement of electrical and mechanical systems to address state-of-good-repair needs



Progress to Date:

Rockaway Line Resiliency Work

Howard Beach Station

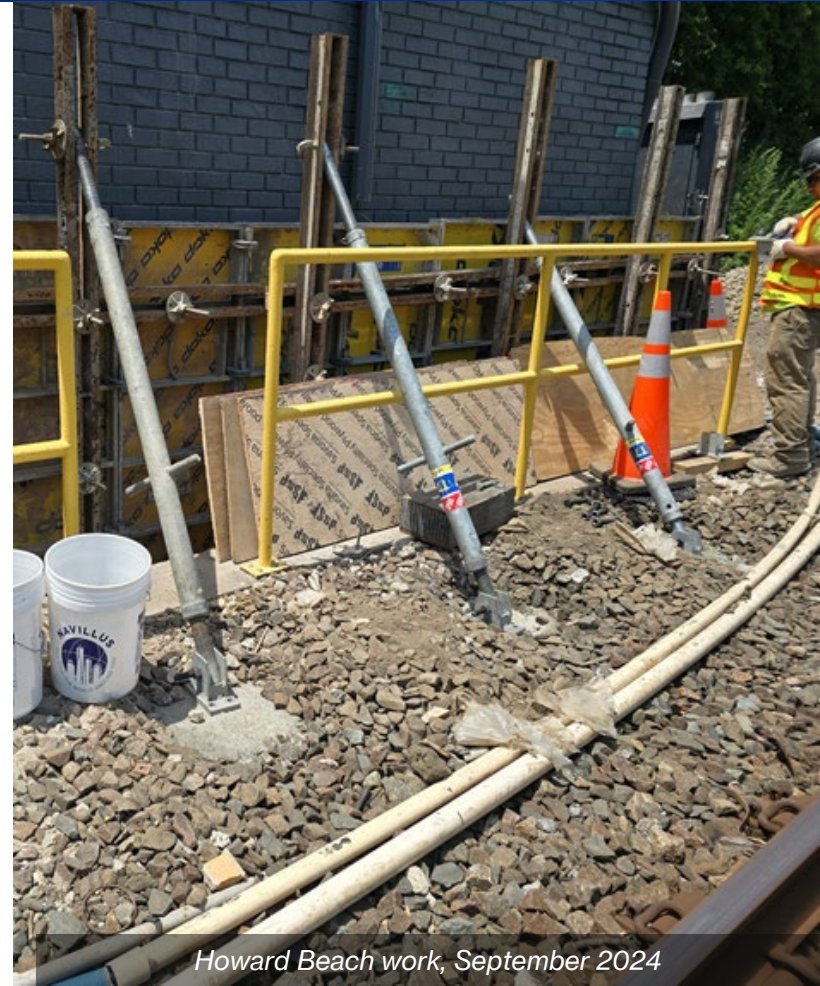
- Normal & Reserve Electrical Distribution Room (EDR)
 - Installation of floodwall – Complete
- Circuit Breaker House
 - Placing concrete for N & S walls – In progress

Broad Channel Station

- Normal & Reserve EDR
 - Exterior concrete Installation – Complete
- Relay Room
 - Exterior Concrete Installation – Complete
 - Lead Inspection and Abatement – Upcoming
 - Prepare for Painting – Upcoming

Beach 116th St

- Relocation of Electrical Components – Upcoming



Howard Beach work, September 2024

Beach 105th Street Signal Tower

Electrical Systems

- Relocation of Electrical Components – Complete

Signal Tower Structure

- Foundation Work – Complete
- Structural Steel Erection – In Progress

Street Impacts

- Freeway closed between Beach 104th – Beach 108th



Rockaway Line Viaduct

Preparation

- Performed concrete inspections
- MPT set up
- Ongoing safety walks

Rehabilitation Work

- Chipping and minor repairs – In progress
- Pneumatic concrete installation – In progress

Current viaduct work locations:

- Beach 59th St – Beach 54th St
- Beach 108th St – Beach 105th St

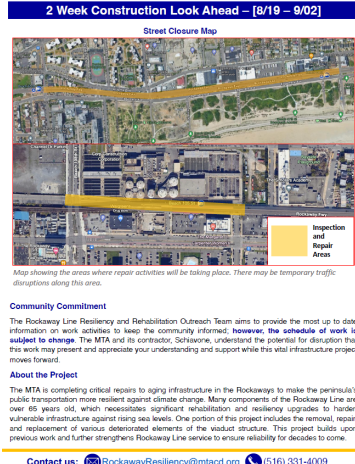


Viaduct work, August 2024

Rockaway Line Viaduct (cont.)

In certain areas, parking may need to be temporarily removed and/or traffic patterns may need to be temporarily changed. **To minimize impacts to the community, our team:**

- Circulates two-week construction lookaheads detailing upcoming work
- Flyers cars and local businesses
- Works with DOT to maintain one lane of traffic or install detour signs, as needed



Example Viaduct work notifications, August 2024

Hammels Wye Viaduct

Electrical/Signal Work

- Installed temporary duct bank

Viaduct Rehabilitation

- Early work rivet busting completed
- Lead abatement performed



A train passes through Hammels Wye, March 2024

South Channel Bridge

Bridge Mounted Debris Shields

- Visual Surveys – Complete
- Lead abatement – Complete
- Drill anchors for debris fence – In progress

Control House

- Relocate operators – Complete
- Demolish control house – In progress
- Asbestos abatement – Complete

South Channel Bridge Generator

- Install underwater fiber optic cable – Complete
- Install concrete pad – Complete
- Demolish & remove existing generator – In progress



South Channel Bridge



Debris shields

Upcoming Work:

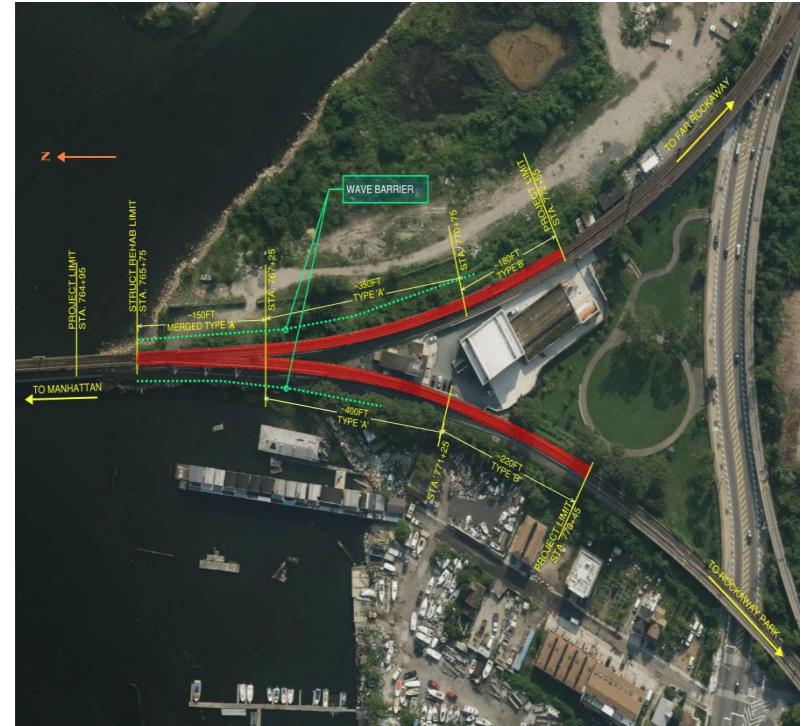
Hammels Wye Viaduct & South Channel Bridge

Hammels Wye

- Repairing deteriorated elements of the closed deck structure
- Removing and replacing the elevated structure, installing a prefabricated concrete slab, installing new tracks, and associated systems

South Channel Bridge

- Replacing and repairing its mechanical and electrical systems



Upcoming Work Through Q2 2025

Resiliency

- Install concrete walls at Howard Beach circuit breaker house
- Perform lead inspection, abatement, and interior painting at Broad Channel relay room
- Complete electric system relocation at Beach 116th Station
- Begin rebar and formwork installation at Beach 116th Station

Rehabilitation

- Progress pneumatic concrete installation
- Complete Beach 105th St Signal Tower steel erection
- Begin Beach 105th St Signal Tower lower-level construction
- Hammels Wye Viaduct rehabilitation
- Complete demolition work at South Channel Bridge



Illustrative rendering of the future Beach 105th St Signal Tower

17-Week Planned Outage:

Hammels Wye Site Constraints

- To complete this work, service disruption is unavoidable because Hammels Wye is a narrow bottleneck
- Liquidated damages for contractor delays
- Major Construction Review Unit (MCRU) reviewed and agreed with this conclusion



Planned Service Diversions

17-Week, 24/7 Outage of Rockaway Line from Howard Beach to Hammels Wye

- Scheduled for **Friday, January 17** through **Monday, May 19, 2025**
- 10-week South Channel Bridge marine closure (occurs within the 17-week, 24-7 outage)
- There will be additional fall weeknight and weekend service diversions to support this project

Alternate Service Options – 17-Week Outage


17-week, 24/7 outage:

- 24/7 **S** shuttle trains operate between Far Rockaway and Rockaway Park.
- 24/7 shuttle buses operate between Howard Beach and Far Rockaway via Nassau Expressway, and between Howard Beach and Beach 67th St via Broad Channel and Beach 90 St.



17-Week Outage Train and Shuttle Bus Schedules


We are supporting customers during this outage with frequent, consistent shuttle train and shuttle bus service:

Service Name	Route	Frequency
 Shuttle Train	Far Rockaway – Rockaway Park	Every 15 minutes.
Q97 Shuttle Bus	Howard Beach – Far Rockaway via Nassau Expy	Peak: Every 6-8 minutes. Midday: Every 10 minutes. Weekend: Every 10 minutes.
Q109 Shuttle Bus	Howard Beach – Beach 67 St via Broad Channel	Peak: Every 4-5 minutes. Midday: Every 8-9 minutes. Weekend: Every 10 minutes.

MTA will work with NYCDOT to install new bus stop signs and update existing signs to include the Q97 and Q109 routes.

Other Travel Alternatives

Customers can take advantage of these other travel alternatives:

- **Q52/Q53 SBS**
 - Provides direct connection to  train at Rockaway Blvd
- **Q35**
- **QM16**
- **QM17**
- **Long Island Rail Road at Far Rockaway**
 - Existing LIRR service can accommodate additional riders
- **NYC Ferry**
 - Existing ferry service can accommodate additional riders

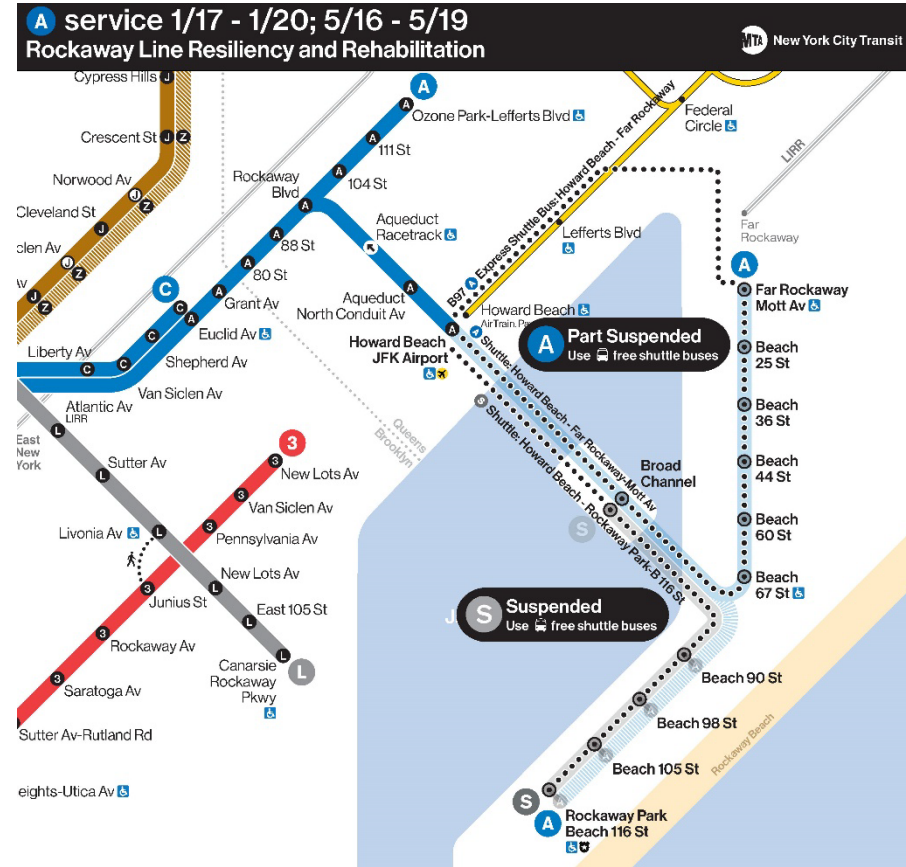
Other Travel Alternatives (cont.)



Alternate Service Options – 2 Weekend Outages

Weekend Outages:

- 11:30pm Friday to 5am Monday, 1/17-1/20, 5/16-5/19
- **A** terminates at Howard Beach.
- Rockaway Park **S** suspended.
- Far Rockaway – Rockaway Park **S** suspended.
- Shuttle buses between Howard Beach and:
 - Far Rockaway (non-stop)
 - Far Rockaway, via Broad Channel
 - Rockaway Park, via Broad Channel



Additional Planned Service Diversions – Fall 2024

Weeknight Outages

- **9:30pm Thursday to 5am Friday, 10/17-10/18 and 11/21-11/22**
 - **A** terminates at Howard Beach. Rockaway Park **S** suspended. **S** operates between Far Rockaway and Rockaway Park. Shuttle bus operates between Howard Beach and Beach 67 St stopping at Broad Channel.

Weekend Outages

- **11:30pm Friday to 5am Monday, 10/18-10/21, 10/25-10/28, 11/1-11/4**
 - **A** terminates at Rockaway Park. **A** to Far Rockaway suspended. Rockaway Park **S** suspended. Shuttle bus operates between Beach 90 St and Far Rockaway.
- **11:30pm Friday to 5am Monday, 11/8-11/11, 11/15-11/18, 11/22-11/25**
 - **A** terminates at Far Rockaway. Rockaway Park **S** suspended. Shuttle bus operates between Beach 67 St and Rockaway Park.

Public Outreach:

17-Week Planned Outage Czar

NYCT has successfully implemented the service outage “czar” role on weekend outages and the recent G Train outage

The 17-week outage czar will improve customer experience through a variety of clear and comprehensive customer engagement strategies, including, but not limited to:

- Communicating the timing of service changes and alternatives before and during the outage
- Monitoring deployment and performance of shuttle bus and shuttle train service, making real-time adjustments
- Deploying on the ground customer-facing personnel to help commuters navigate the outage
- Overseeing customer touchpoints to communicate service changes, from announcements to digital tools
- Maintaining signage quality control

Community Engagement

The Project's Community Outreach Team is committed to proactive engagement focused on minimizing the effects of our construction on the public through **advanced and continual communication, planning, and coordination**

Project communications include, but are not limited to:

- Elected officials & Community Board presentations
- Project website (<https://new.mta.info/project/rockaway-line-resiliency-and-rehabilitation>)
- Dedicated 24/7 hotline (516-331-4009) and email (RockawayResiliency@mtacd.org)
- Project fact sheet & FAQ



Local Hiring program

The project will be among the first to take advantage of new federal guidance allowing local hiring provisions in MTA projects.

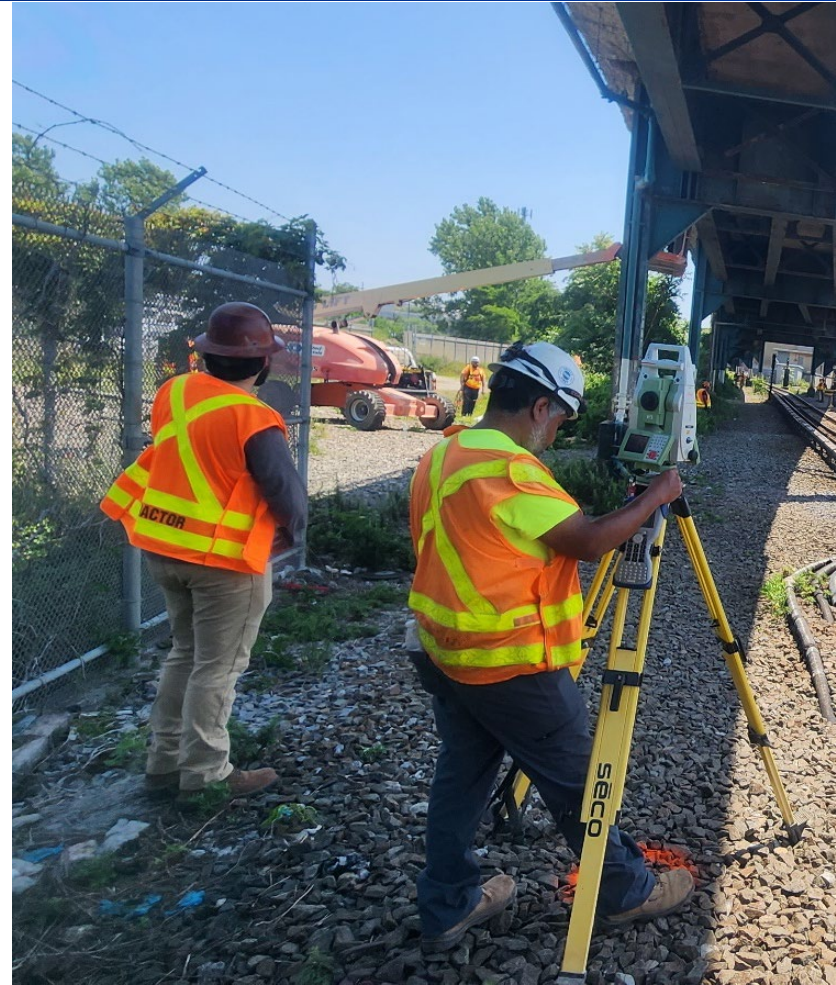
- The MTA has set a goal of **20% of the contractor, Schiavone's, NYS workforce** coming from the region.
- Schiavone continues to meet this monthly goal by:
 - Performing outreach with local community organizations;
 - Advertising for available/upcoming job opportunities; and
 - Requires coordination/sign-up through local trade union organizations

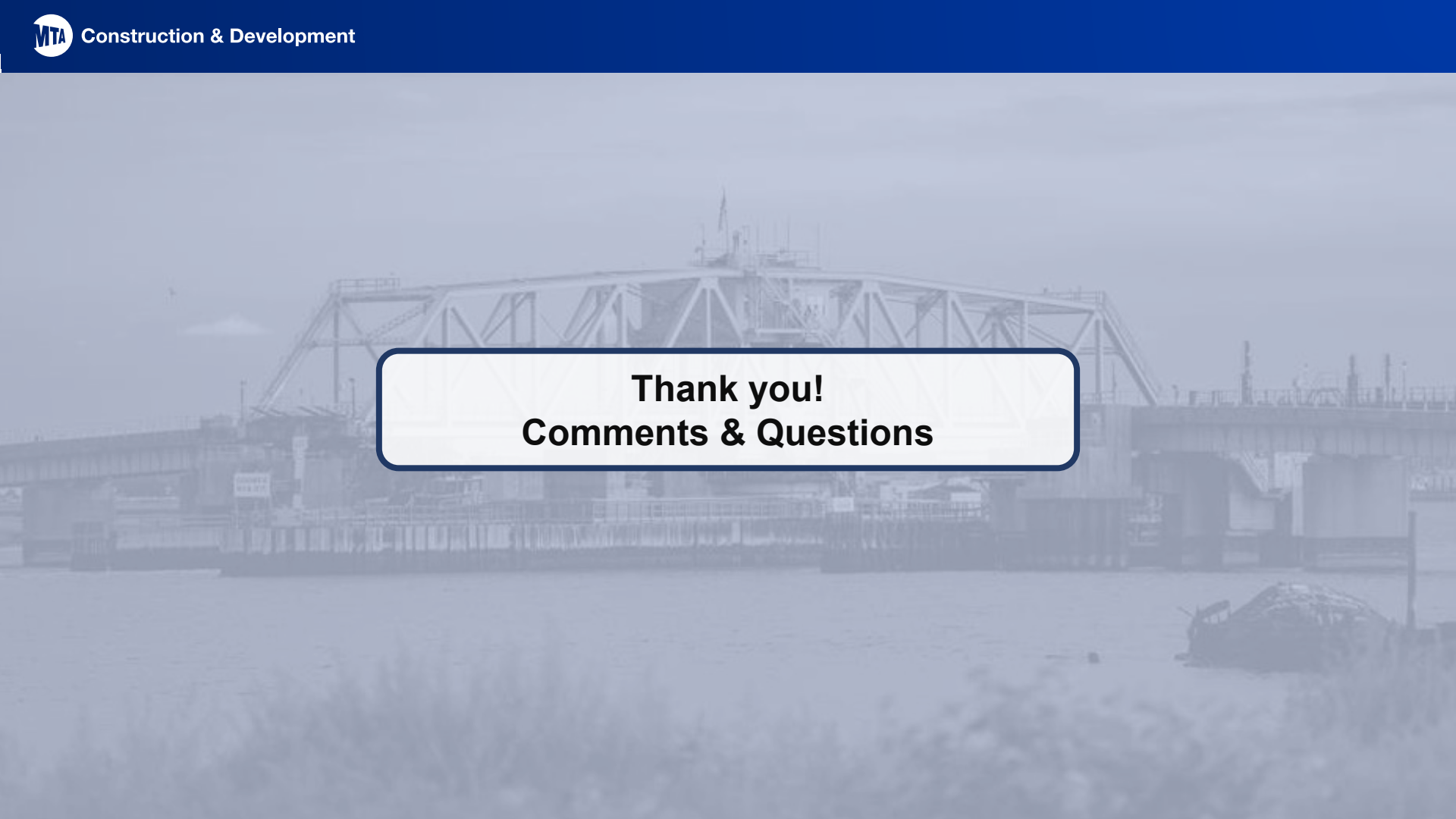


Project contractor, Schiavone, participating in an MTA hosted Job Information Event.

Disadvantaged Business Enterprise Program

- The MTA has set a DBE goal of 22.5% of the Contract Price to ensure participation by minority- and women-owned firms.
- Schiavone is actively soliciting bid proposals from DBE companies to perform work on this project.





Thank you!
Comments & Questions



Contact Us



Project hotline: 516-331-4009



RockawayResiliency@mtacd.org



<https://new.mta.info/project/rockaway-line-resiliency-and-rehabilitation>

Alternate Service Options – 17-Week Outage

17-Week Planned
Outage

05



Alternate Service Options – 17-Week Outage

17-Week Planned
Outage

05

Q97 **A** Shuttle Bus: Howard Beach-JFK Airport  - Far Rockaway-Mott Av



Alternate Service Options – 17-Week Outage

17-Week Planned
Outage

05

Q109 **A** Shuttle Bus: Howard Beach-JFK Airport ✈️ - Beach 67 St

