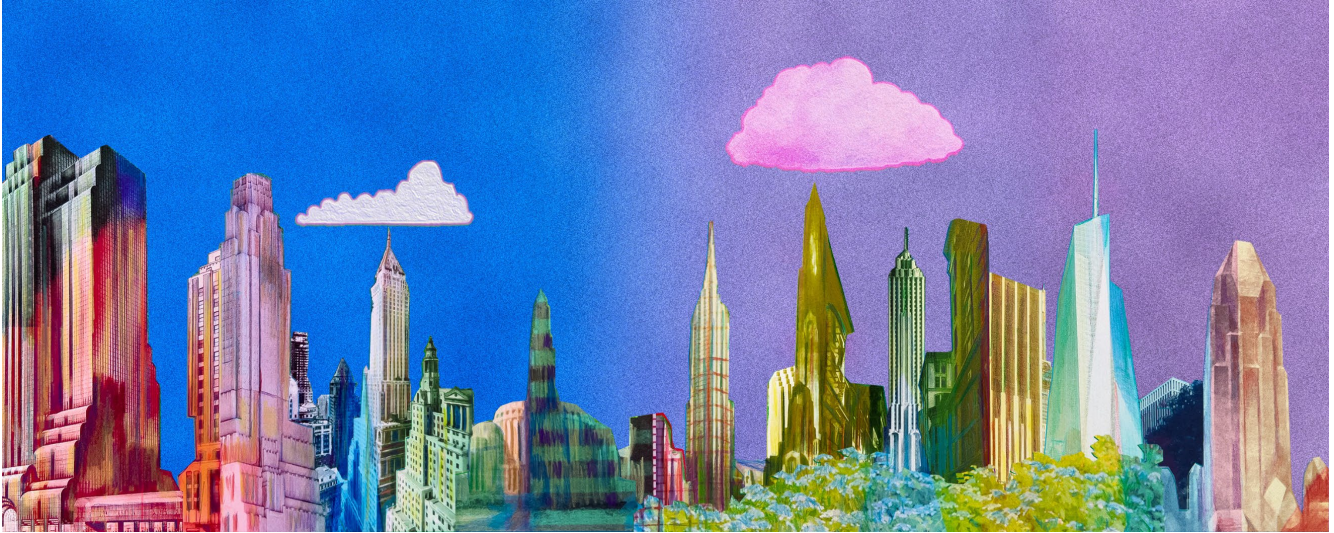




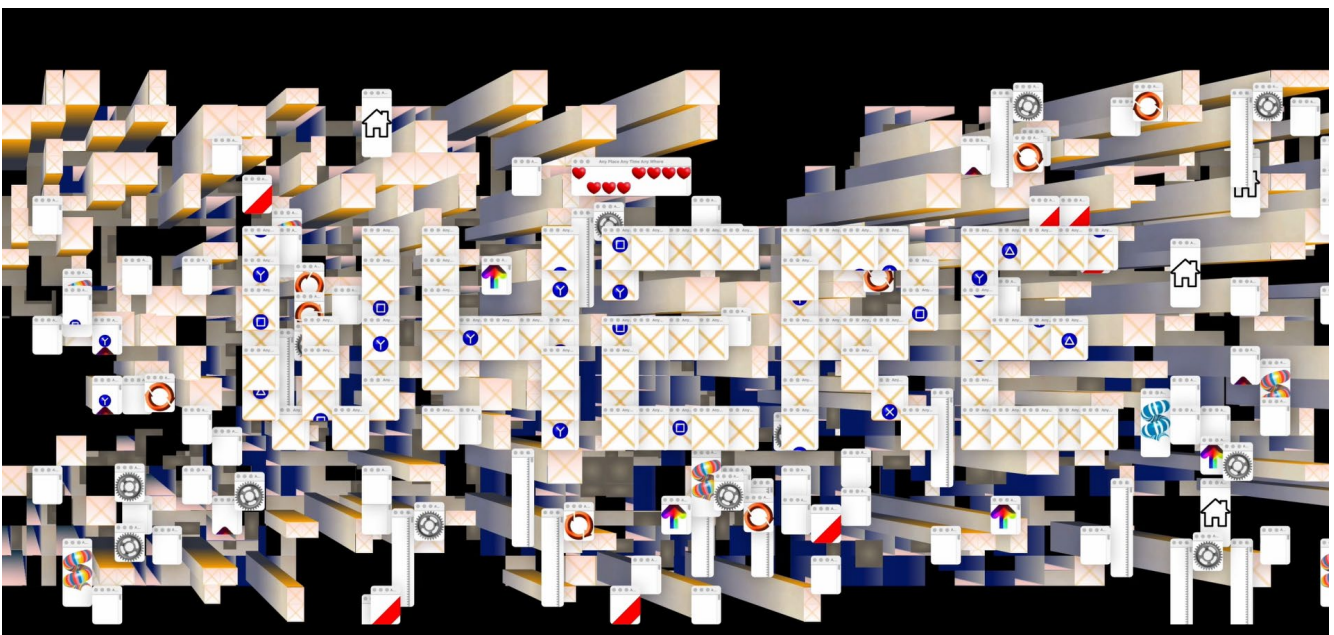
Media Announcement

Two New Digital Artworks at Grand Central Madison Take Inspiration from the City's Frenetic Energy



Ouranos, Above Us Only Sky (2024) © Monika Bravo, LIRR Grand Central Madison. Commissioned by MTA Arts & Design. Image: Courtesy of the artist.

(NEW YORK, NY — June 25, 2024) MTA Arts & Design is pleased to announce the debut of two new digital artworks by artists Monika Bravo and Yehwan Song at Grand Central Madison. In *Ouranos, Above Us Only Sky*, Bravo's vibrant cityscape reflects the passage of time and the crystallization of civilization, encouraging contemplation of humanity's creative prowess. Bravo's hand-colored, collaged artwork contrasts with Song's digital vernacular. *Anyplace, Anytime, Anywhere* features a multitude of digital icons bouncing like a pinball machine and eventually coalescing into one word at the center of each screen. Both drawing from the frenetic energy of the city, the artworks are displayed for two minutes at regular intervals across five monumental LED screens near the 47th Street entrance to Grand Central Madison.



Anyplace Anytime, Anywhere (2024) © Yehwan Song, LIRR Grand Central Madison. Commissioned by MTA Arts & Design. Image: Courtesy of the artist.

“These new projects by artists Monika Bravo and Yehwan Song take inspiration from our built environment for the delight of all who traverse above and below ground,” said **Sandra Bloodworth, Director, MTA Arts & Design**. “This is the third set of Digital Art commissions for the Madison Concourse and MTA customers have come to expect a visual feast that will stay with them on their journeys and beyond.”

Culling images from Futurist architecture, including Antonio Sant’Elia’s never-realized buildings “Città Nuova” (“New City”) and Hugh Ferriss’s “The Four Stages,” Bravo’s surreal landscape prompts introspection about our role in shaping the world and the potential outcomes of our endeavors. Directly referencing Grand Central’s vaulted ceiling above, constellations from Johann Bayer’s 1603 star atlas Uranometria float through the sky against pulsating, colorful abstractions.

“Inspired by my recent studies in Praxeology and open market economic principles, this animation explores how human action, purposeful behavior, and personal accountability shape civilization,” says **Monika Bravo**. “It highlights how individuals, through voluntary interactions, contribute to our collective journey.”



Installation view, *Ouranos, Above Us Only Sky* (2024) © Monika Bravo, LIRR Grand Central Madison. Commissioned by MTA Arts & Design. Photo: Courtesy of the artist.

Song’s digital artwork takes inspiration from the MTA’s complex network of subway and train lines beneath the built environment and the frenetic paths that individuals move within it. Through collaboration with computational tools including artificial intelligence and coding, icons, emojis, and browser windows bump into one another, slide through portals, and rotate in a seemingly random configuration. Over the two-minute run time, order slowly emerges as the forms align to reveal a single word. Passing in either direction, a mysterious poem can be read that is open to interpretation: ANY PLACE TIME WHERE ANY.

“People move between places on their own paths in chaos. One moment, they would be going somewhere, and then they would come back to each other,” says **Yehwan Song**. “They move along their individual paths but still share a mutual story. These are events we can glimpse from each other and ones we can imagine, understand, and empathize with based on our own experiences on the train platform.”



Installation view, *Anyplace, Anytime, Anywhere* (2024) © Yehwan Song, LIRR Grand Central Madison. Commissioned by MTA Arts & Design. Photo: MTA Arts & Design.

These artworks are presented as part of the MTA Arts & Design **Digital Art Program**, which invites artists working in digital media to propose an artwork for temporary exhibition at Grand Central Madison and Fulton Center in Lower Manhattan. This is the third cohort of artists to present their digital work in Grand Central Madison, which opened in January 2023. The new digital artworks are presented alongside highlights of Arts & Design's Long Island Rail Road projects, Poetry in Motion, and additional Long Island Rail Road content.

Taken together, these initiatives are part of the larger Grand Central Madison “cultural corridor,” a new venue for artistic expression curated by MTA Arts & Design. The corridor includes dynamic permanent mosaic commissions by **Yayoi Kusama** and **Kiki Smith** and a display of photography rotated periodically at the GCM south entrance at 42nd Street. The **Photography Program** currently features the work of **Stephen Wilkes**. These unique and publicly accessible artistic endeavors are a reminder of the enduring power of public art and its ability to connect people from all walks of life.

ABOUT MONIKA BRAVO

Monika Bravo (b. 1964, Bogotá, Colombia) is a polymath and multidisciplinary artist whose work encompasses psycho-technologies and immersive sculptural environments. She is working on *Arcana*, a public art commission for the IEB at the University of Washington in Seattle. Recently, she received the Civitella Ranieri Visual Arts Fellowship in Italy and has completed several public art commissions, including *OGX BRT* in Ogden, Utah, *LIMINAL* at St. Paul International Airport, *Unus Mundus* at the East Boston Police Headquarters, and *Duration* at NYCT Prospect Av station in Brooklyn. This summer, Bravo is self-publishing her book, *The Nature of My Reality*, co-produced with Mari Budlong and funded partly by The Miami Individual Artists Program. The book chronicles her journey from disempowerment to self-awareness and explores economic systems, historical banking roots, and literary connections to political and ecclesiastical authority. Bravo's philosophy integrates Eastern, ancestral, and cosmological traditions with psychological inquiries, praxeology, and Austrian economics, emphasizing liberty, value, resources, and self-worth as key components of civilized individual inquiry aimed at service. Bravo has exhibited her work internationally at venues such as the Rubin Museum of Art, the 56th Venice Biennale, and the Museo Nacional Centro de Arte Reina Sofía.

ABOUT YEHWAN SONG

Yehwan Song is a Korean-born, New York-based web artist specializing in creating non-user-centric, unconventional, and diverse independent internet spaces. Her primary focus in her projects is on exploring the discomfort and insecurity experienced by marginalized users, which is often hidden beneath the facade of technological utopianism, marked by excessive comfort, speed, and ease of use. Song's work is a visual method of navigating between online and physical spaces. She creates websites that foster new interactions between users and devices, including performances. Additionally, she crafts physical installations and sculptures that visualize online spaces and phenomena in diverse materials and contexts, as well as online spaces informed by physical inputs. Song has participated in residencies at Pioneer Works and New INC, and her work has been included in the Helsinki Biennale (2023), Istanbul Biennale (2022), the Korean Pavilion at the Venice Biennale (2021), and museum exhibitions at the Heckscher Museum and Seoul Museum of Art, among others.

ABOUT MTA ARTS & DESIGN

MTA Arts & Design encourages the use of public transportation by providing visual and performing arts in the metropolitan New York area. The Digital Art program features works of contemporary new media artists at Fulton Center and Grand Central Madison LIRR terminal. The Percent for Art program is one of the largest and most diverse collections of site-specific public art in the world, with more than 400 commissions by world-famous, mid-career and emerging artists. Arts & Design produces Posters, Digital Art, Photography exhibitions, as well as live musical performances in stations through its Music Under New York (MUSIC) program, and the Poetry in Motion program in collaboration with the Poetry Society of America. It serves the millions of people who rely upon MTA subways and commuter trains and strives to create meaningful connections between sites, neighborhoods, and people.

PRESS CONTACT

MTA Press Office
(212) 878-7440
arts@mtahq.org

CONNECT

mta.info/art
Instagram: @mtaartsdesign
Twitter: @MTAArtsDesign
Facebook: @MTAArtsDesign