



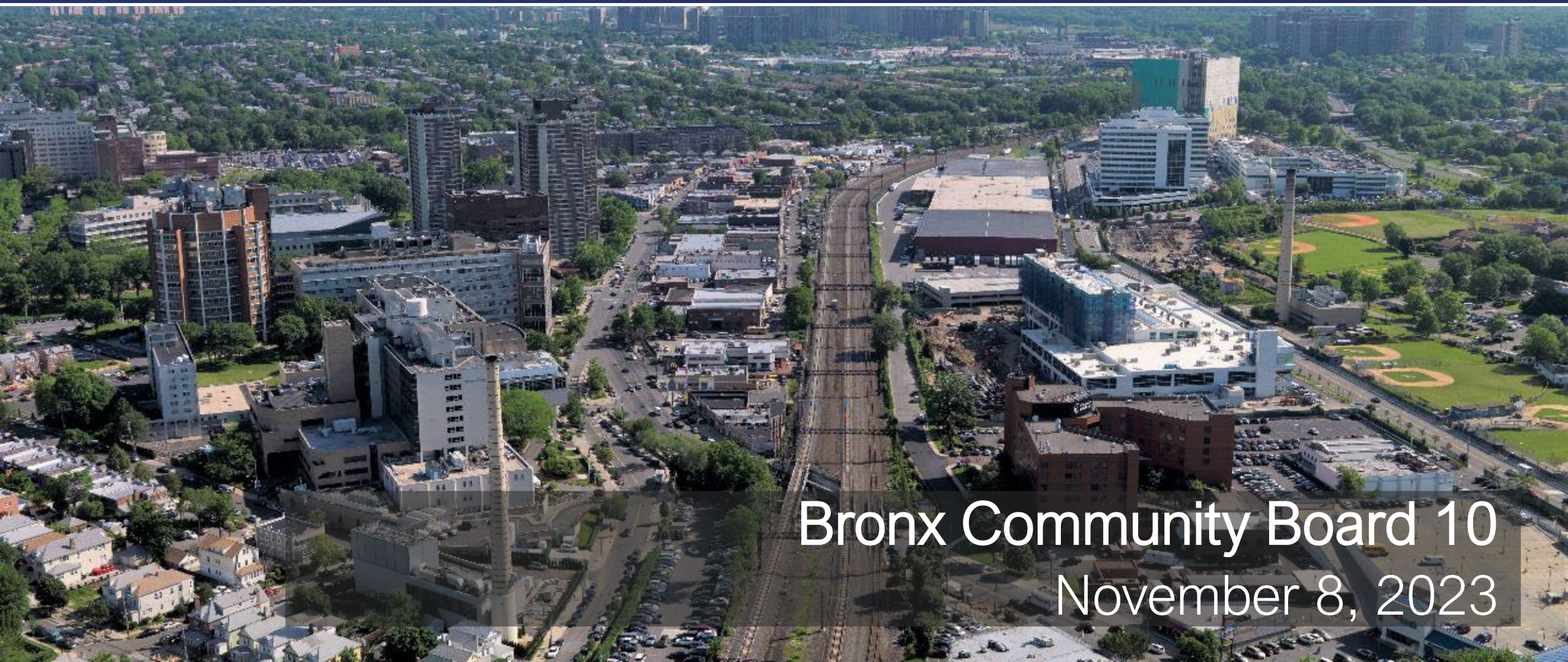
# Penn Station Access



Metropolitan Transportation Authority

Construction & Development

Metro-North Railroad



Bronx Community Board 10

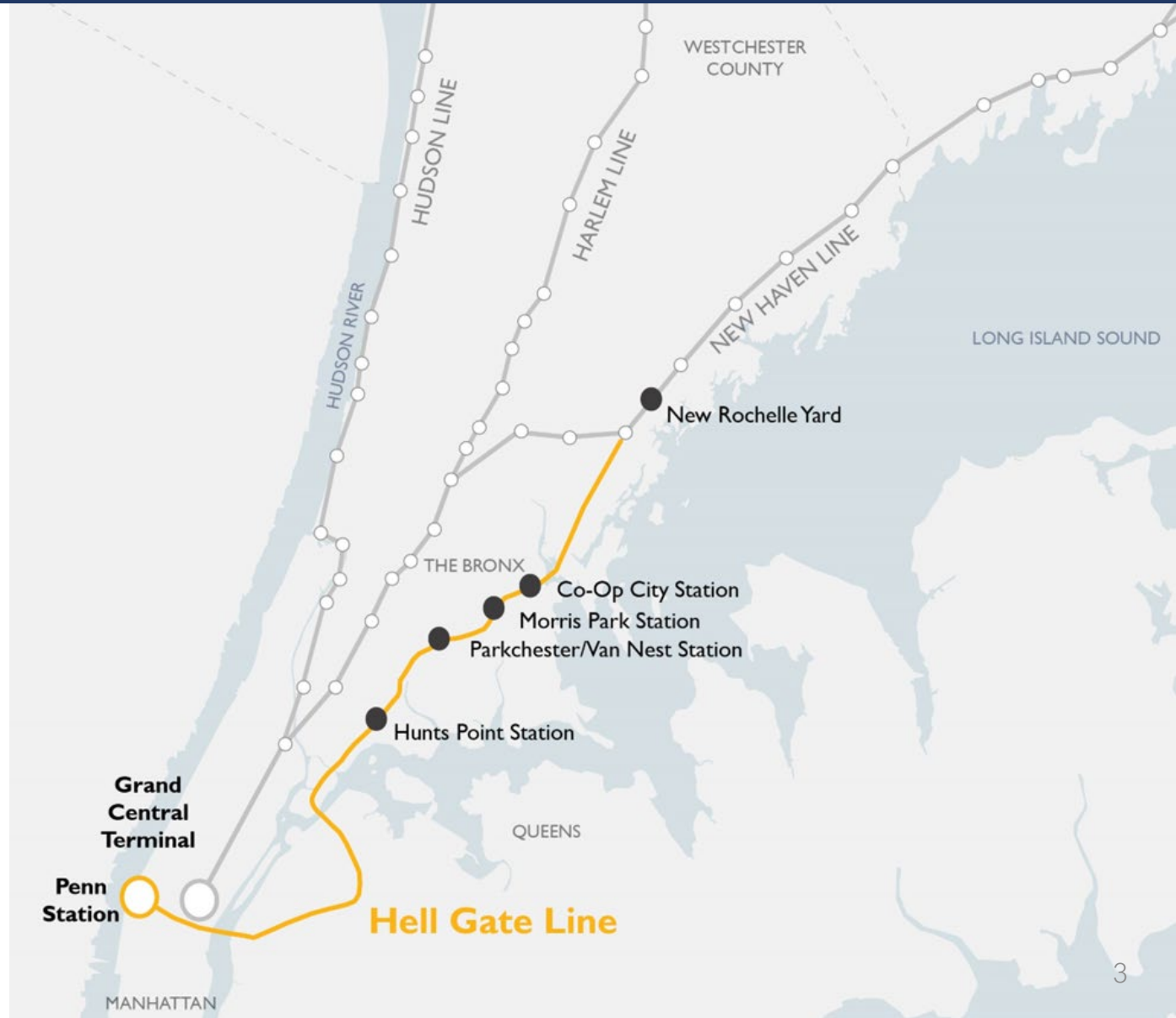
November 8, 2023

# Agenda

- Project Overview
- Long-Term-Outage / Progress to Date
- Project Schedule / Recovery Strategy
- Upcoming Work
- Community Engagement
- Contact Us
- Q&A

# Project Overview

- New Metro-North rail service to and from Penn Station
- 4 new ADA stations in the Bronx; reduce commutes to Midtown up to 50 minutes each way
- Regional transportation connectivity
- Upgrade Amtrak's Hell Gate Line to a state of good repair
- New Rochelle Yard Expansion



# Key Elements

THE  
BRONX

Hudson River

New Rochelle AC Substation

New Rochelle Yard

Pelham Lane Bridge

Bronx Interlocking

Pelham Bay Bridge

Co-Op City Station

Pelham Bay Interlocking

Co-Op City AC Substation

Morris Park Station

Hell Gate Line New Track

Eastchester Road Bridge

Bronxdale Avenue Bridge

Van Nest AC Substation

Tremont Interlocking

Parkchester/Van Nest Station

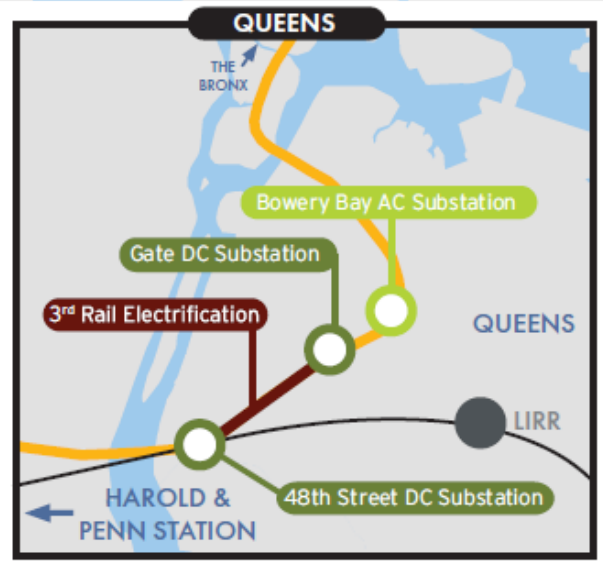
Bronx River Bridge

Hunts Point Station

Young Interlocking

Leggett Interlocking

Oak AC Substation



# Overall Project Benefits



## Decreased Travel Times

Improves access to underserved neighborhoods and gets you to your destination faster



## Economic Vitality

Supports the local and regional economy



## Bridging Communities

Connects you to several neighborhoods in the Bronx and throughout the region



## Sustainability

Encourages drivers to switch to train travel, reducing traffic congestion and improving air quality



## Reverse Commuting Opportunities

Attracts new talent and broadens the job market



## Optimizing Existing Infrastructure

Delivers cost-effective transit solutions



## Regional Transportation Connectivity

Expands your travel opportunities



## Enhanced Network Reliability

Provides flexibility for Metro-North and improves on-time performance for intercity passengers

# Time Savings

Departure	Arrival	Approx. Current Travel Time*	Approx. Time with Penn Station Access	Savings
Co-Op City	Penn Station	75 Minutes	25 Minutes	<b>50 Minutes</b>
Co-Op City	Stamford	110 Minutes	37 Minutes	<b>73 Minutes</b>
Morris Park	Penn Station	60 Minutes	25 Minutes	<b>35 Minutes</b>
Morris Park	Stamford	95 Minutes	40 Minutes	<b>55 Minutes</b>
Parkchester/Van Nest	Penn Station	60 Minutes	20 Minutes	<b>40 Minutes</b>
Parkchester/Van Nest	Stamford	85 Minutes	42 Minutes	<b>43 Minutes</b>
Hunts Point	Penn Station	45 Minutes	16 Minutes	<b>29 Minutes</b>
Hunts Point	Stamford	80 Minutes	47 Minutes	<b>33 Minutes</b>

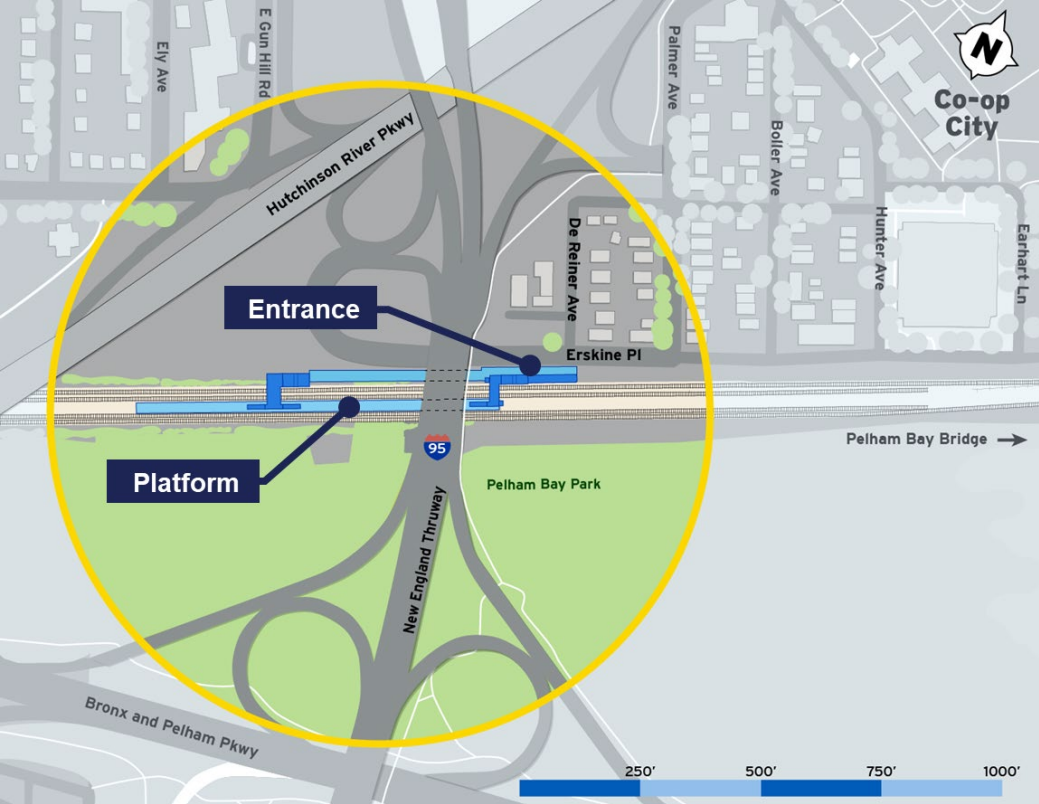
\*Estimate based on existing transit options

# Amtrak and Freight Railroad Benefits

- Improves on-time performance and reliability for intercity passengers
- Brings Amtrak's Hell Gate Line to a state of good repair, including:
  - Hell Gate Line catenary system
  - 100+ year old bridge structures
- Electrical upgrades, improved signal system, and state-of-the-art communication system
- Significant enhancements to stormwater management including new drainage



# Co-op City Station Conceptual Site Plan & Rendering





# Long-Term-Outage / Progress to Date

---

- LTO Summary
- Major Milestones
- Progress Updates
- Leggett Interlocking

# 2023 Long-Term Outage

Collaborated with Amtrak to execute a **Single-Track Long-Term Outage (LTO)**:

- Mar. 6 – Sept. 1, 2023
- Improve construction efficiency and productivity
- Provides Design-Builder larger windows to advance critical work along tracks



# Long-Term-Outage Milestones

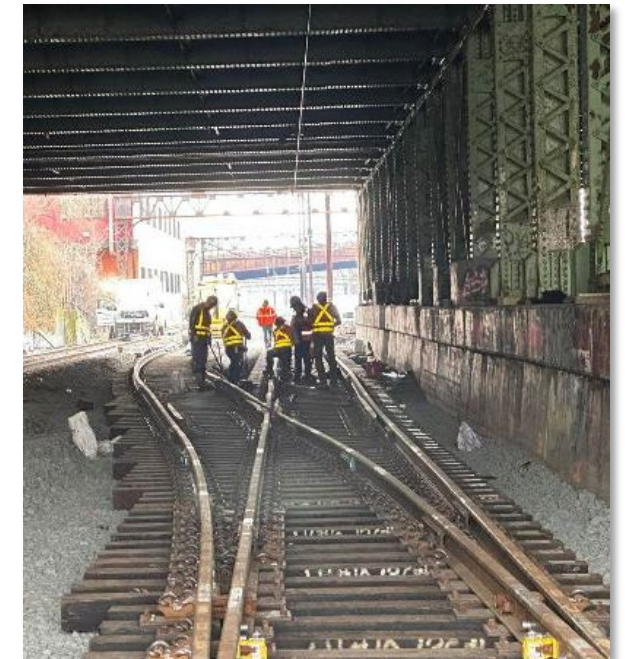
- Completed the Removal of 3mi of CSX Track 5
- Completed CSX-E Switch Installation
- Completed Track 2 Reprofilng



Plate C Overhead Catenary Structure (OCS)  
Wire Raise Inspection



Demolition of Track 5



Installation of CSX-E Switch

# Progress to Date

## Van Nest



## Bridges



## Retaining Walls



# Progress to Date: Leggett Interlocking Crossovers

## Benefits

- Increased operational flexibility
- Enables extended track outages during construction
  - “Permanent LTO”

## 60% of Leggett Interlocking Complete To Date

- Completed OCS Foundation Installation
- 60% of OCS Portal Structures Installed
- 90% of Drainage System Installed
- Progressed Track and Signal Work
- Leggett Crossover special Track 1 work components Installed

## Upcoming Milestones

- Commissioning of Leggett Interlocking in 2024



Drainage system installation near Leggett Interlocking

# Project Schedule / Recovery Strategy

---

- Project Risks & Recovery Strategy
- Upcoming Work
- Street Level Impacts

# Key Project Risks & Recovery Strategy

## Railroad Operators Coordination

- Limited access and support availability of Force Account staff
- Regional schedule coordination

## Potential Schedule Delay

- Time Impact Analysis / Recovery Schedule

## Recovery Strategy

- Collaborating with Amtrak:
  - Second LTO in Spring 2024
  - Installing engineering controls to reduce Force Account needs
  - Increase Amtrak Force Account periods



# UPCOMING WORK 2023-2024

---



## COMMISSION LEGGETT CROSSOVER SPECIAL TRACK WORK COMPONENTS



COMMENCE MORRIS PARK  
AND CO-OP CITY SITE  
PREPARATION AND  
FOUNDATIONS



COMPLETE OCS CAISSON  
INSTALLATION AT VAN NEST, AND  
COMMENCE PORTAL  
INSTALLATION



COMPLETE MICROPILE  
INSTALLATION AT  
BRONXDALE AVE AND  
EASTCHESTER RD BRIDGES



BEGIN OCS CAISSON  
INSTALLATION AT HUNTS POINT  
AND MORRIS PARK



COMMENCE DEMOLITION  
WORK AT BRONXDALE AVE,  
EASTCHESTER RD, PELHAM,  
AND BRONX RIVER BRIDGES.



COMPLETE OCS PORTAL  
INSTALLATION, SIGNAL WORK,  
AND RETAINING WALLS AT  
LEGGETT INTERLOCKING



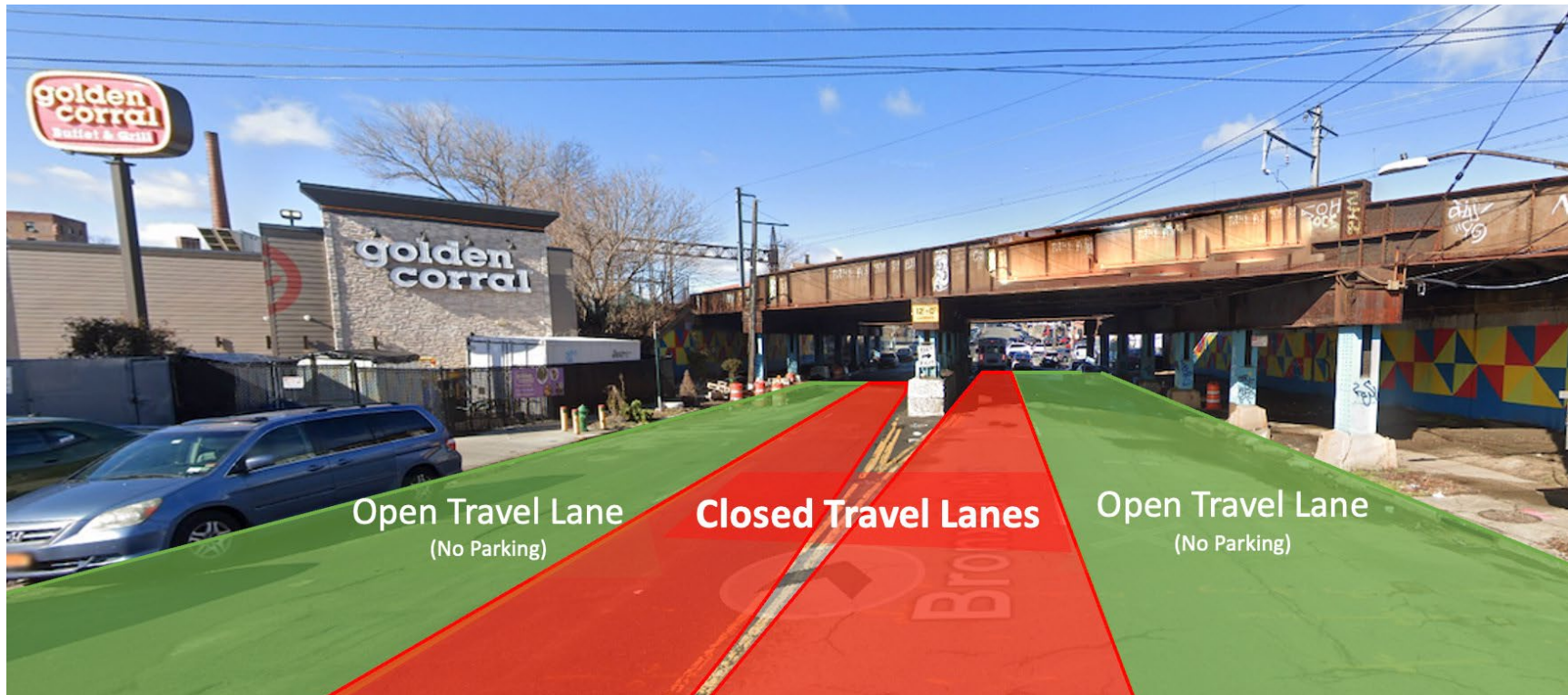
# Street Level Impacts: Eastchester Rd

- Eastchester Road near Bassett Avenue be reduced to one travel lane in each direction.
- Temporary parking restrictions and a change in traffic pattern on Eastchester Road near Bassett Avenue in both directions.
- Beginning on or about Tuesday, May 30, for approximately 6 months.



# Street Level Impacts: Bronxdale Ave

- Bronxdale Ave will be reduced to one travel lane in each direction.
- Lane closures and temporary parking restrictions between Poplar St and Sackett Ave will be in place in both directions.
- Beginning on or about Sept. 25th, 2023, lasting approximately 6 months.



# Street Level Impacts: East Tremont Road

- Temporary parking restriction and sidewalk closure on northbound East Tremont Road between Bronxdale Avenue and Unionport Road.
- A 5-foot protected pedestrian pathway will be maintained at this location.
- Beginning on or about November 1st, 2023, lasting until January 2024.



# Community Engagement



**Hunts Point Spring Mingle**  
**May 18, 2023**



**Eminent Domain Procedure Law Public Hearing**  
**June 22, 2022**

**And Many Other Local Stakeholders Including:** Bronx COC, Greater Hunts Point EDC, Center for Bronx Non-Profits, Hunts Point COC, The Point CDC, and Hunts Point-Longwood CC.



**Ongoing Meetings With Bronx Community Boards and the BWCC**



**Project Ground Breaking Press Event**  
**Dec 9, 2022**



**Job Information Event**  
**June 7, 2022**

# Contact Us



Telephone Hotline: 347-263-7837




Email: [PSAOutreach@mtacd.org](mailto:PSAOutreach@mtacd.org)



Project Webpage: <https://new.mta.info/project/penn-station-access>



Sign-up for future updates and quarterly newsletters on the Project Webpage

An aerial photograph of a city, likely New York City, showing a dense urban landscape with numerous buildings, streets, and a large body of water in the background. A semi-transparent white box with a thin black border is centered over the image, containing the text "Thank You Questions?".

Thank You  
Questions?