



Penn Station Access



Metropolitan Transportation Authority

Construction & Development

Metro-North Railroad



Bronx Community Board 11

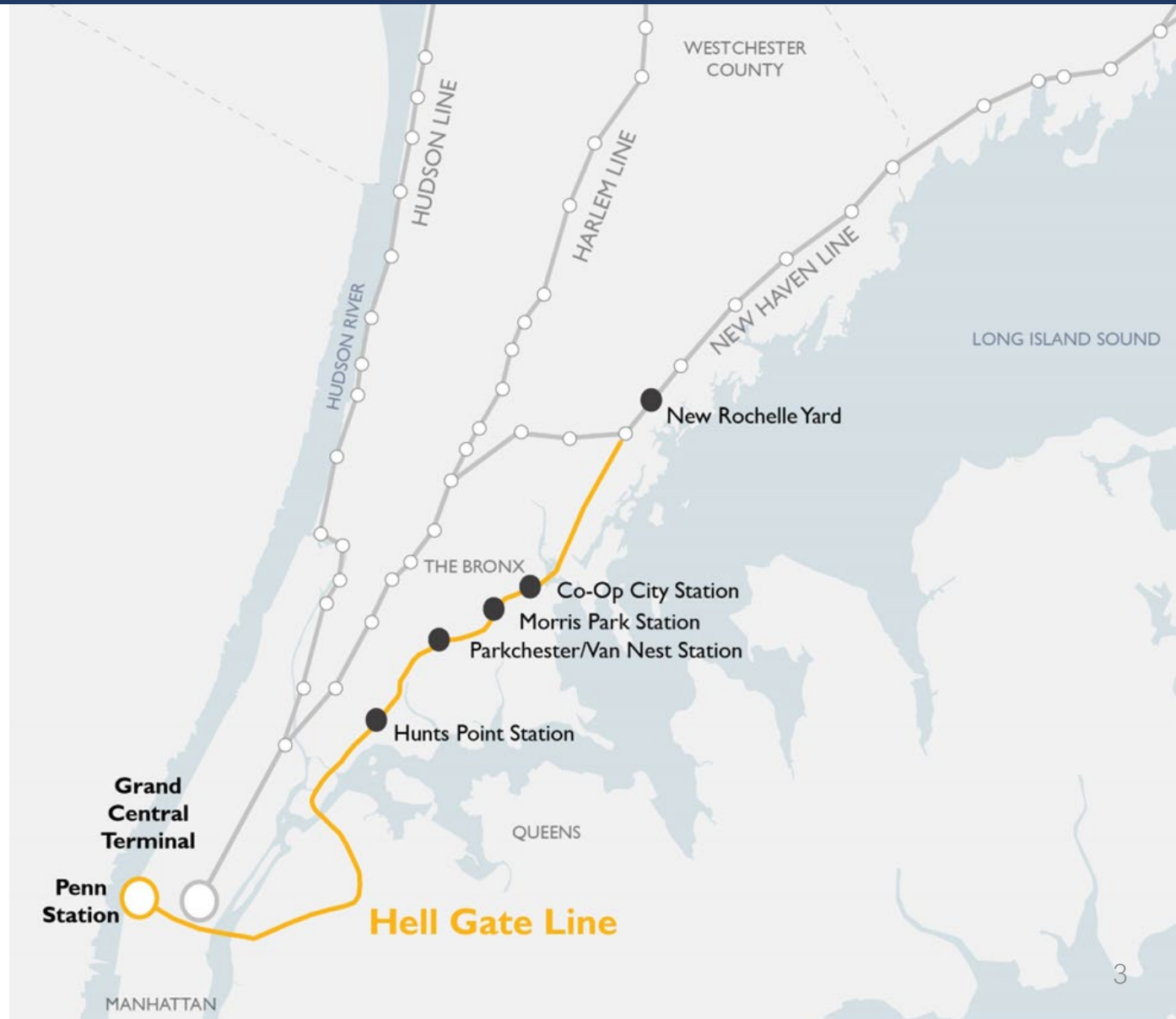
October 2, 2023

Agenda

- Project Overview
- Long-Term-Outage / Progress to Date
- Project Schedule / Recovery Strategy
- Upcoming Work
- Community Engagement
- Contact Us
- Q&A

Project Overview

- New Metro-North rail service to and from Penn Station
- 4 new ADA stations in the Bronx; reduce commutes to Midtown up to 50 minutes each way
- Regional transportation connectivity
- Upgrade Amtrak's Hell Gate Line to a state of good repair
- New Rochelle Yard Expansion



Key Elements

THE
BRONX

Hudson River

New Rochelle AC Substation

New Rochelle Yard

Pelham Lane Bridge

Bronx Interlocking

Pelham Bay Bridge

Pelham Bay Interlocking

Co-Op City Station

Co-Op City AC Substation

Morris Park Station

Hell Gate Line New Track

Eastchester Road Bridge

Bronxdale Avenue Bridge

Van Nest AC Substation

Tremont Interlocking

Parkchester/Van Nest Station

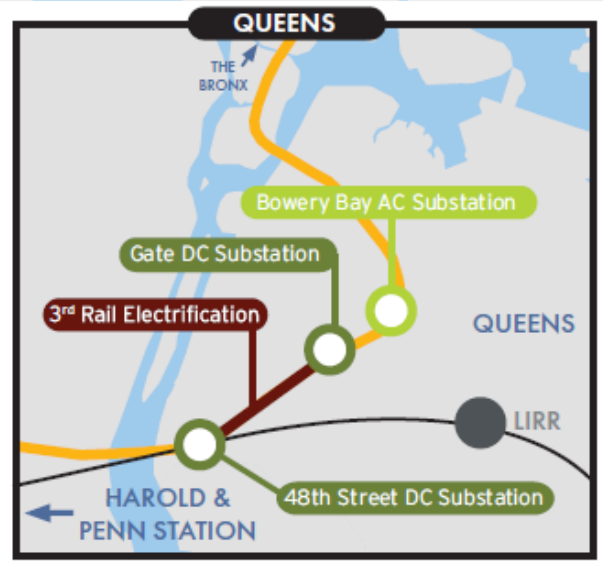
Bronx River Bridge

Hunts Point Station

Young Interlocking

Leggett Interlocking

Oak AC Substation



Overall Project Benefits



Decreased Travel Times

Improves access to underserved neighborhoods and gets you to your destination faster



Economic Vitality

Supports the local and regional economy



Bridging Communities

Connects you to several neighborhoods in the Bronx and throughout the region



Sustainability

Encourages drivers to switch to train travel, reducing traffic congestion and improving air quality



Reverse Commuting Opportunities

Attracts new talent and broadens the job market



Optimizing Existing Infrastructure

Delivers cost-effective transit solutions



Regional Transportation Connectivity

Expands your travel opportunities



Enhanced Network Reliability

Provides flexibility for Metro-North and improves on-time performance for intercity passengers

Time Savings

Departure	Arrival	Approx. Current Travel Time*	Approx. Time with Penn Station Access	Savings
Co-Op City	Penn Station	75 Minutes	25 Minutes	50 Minutes
Co-Op City	Stamford	110 Minutes	37 Minutes	73 Minutes
Morris Park	Penn Station	60 Minutes	25 Minutes	35 Minutes
Morris Park	Stamford	95 Minutes	40 Minutes	55 Minutes
Parkchester/Van Nest	Penn Station	60 Minutes	20 Minutes	40 Minutes
Parkchester/Van Nest	Stamford	85 Minutes	42 Minutes	43 Minutes
Hunts Point	Penn Station	45 Minutes	16 Minutes	29 Minutes
Hunts Point	Stamford	80 Minutes	47 Minutes	33 Minutes

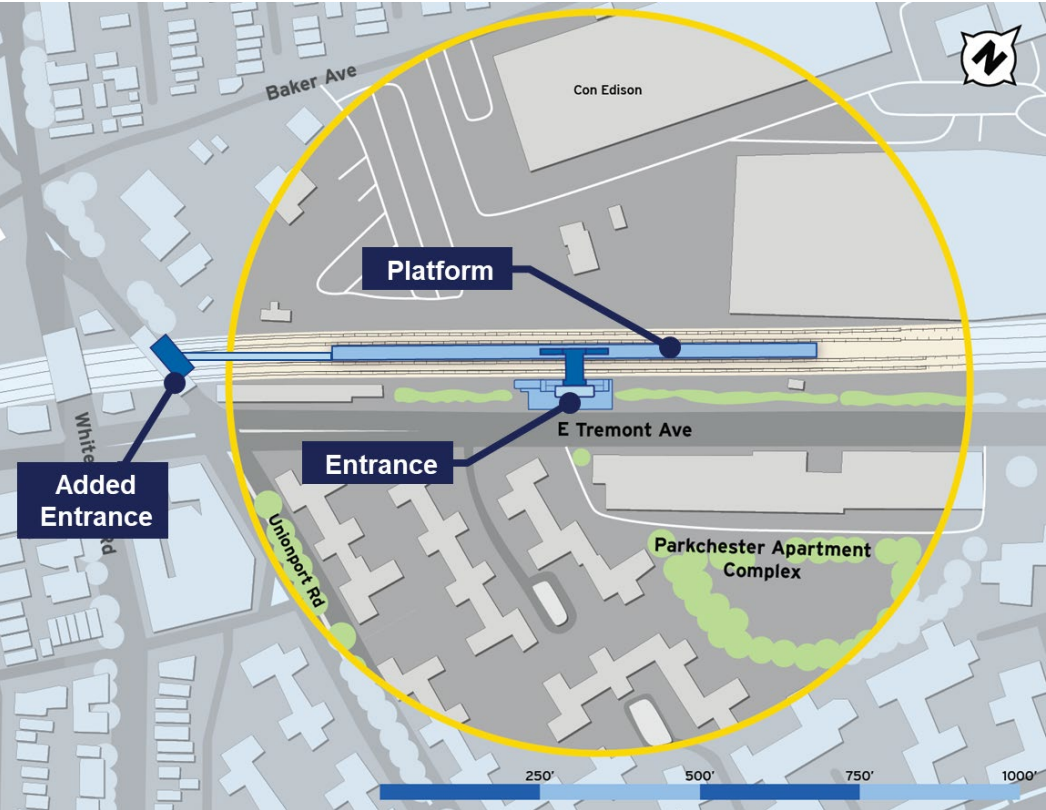
*Estimate based on existing transit options

Amtrak and Freight Railroad Benefits

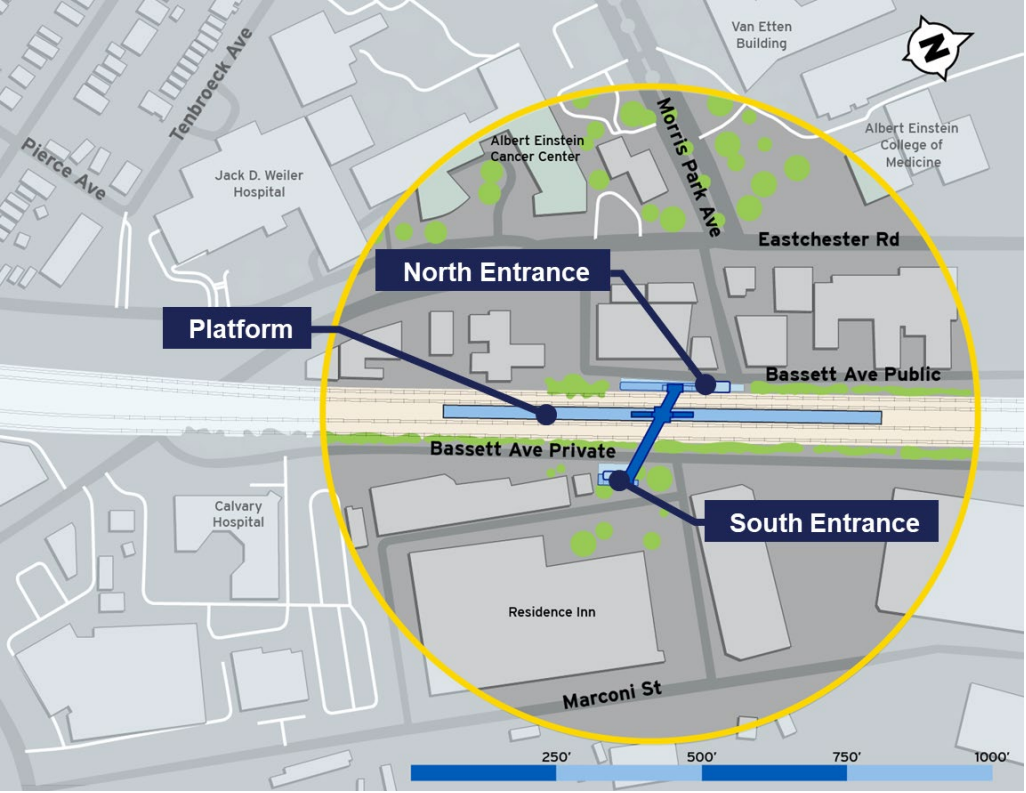
- Improves on-time performance and reliability for intercity passengers
- Brings Amtrak's Hell Gate Line to a state of good repair, including:
 - Hell Gate Line catenary system
 - 100+ year old bridge structures
- Electrical upgrades, improved signal system, and state-of-the-art communication system
- Significant enhancements to stormwater management including new drainage



Parkchester/Van Nest Station Conceptual Site Plan & Rendering



Morris Park Station Conceptual Site Plan & Rendering



Long-Term-Outage / Progress to Date

- LTO Summary
- Major Milestones
- Progress Updates
- Leggett Interlocking

2023 Long-Term Outage

Collaborated with Amtrak to execute a **Single-Track Long-Term Outage (LTO)**:

- Mar. 6 – Sept. 1, 2023
- Improve construction efficiency and productivity
- Provides Design-Builder larger windows to advance critical work along tracks



Long-Term-Outage Milestones

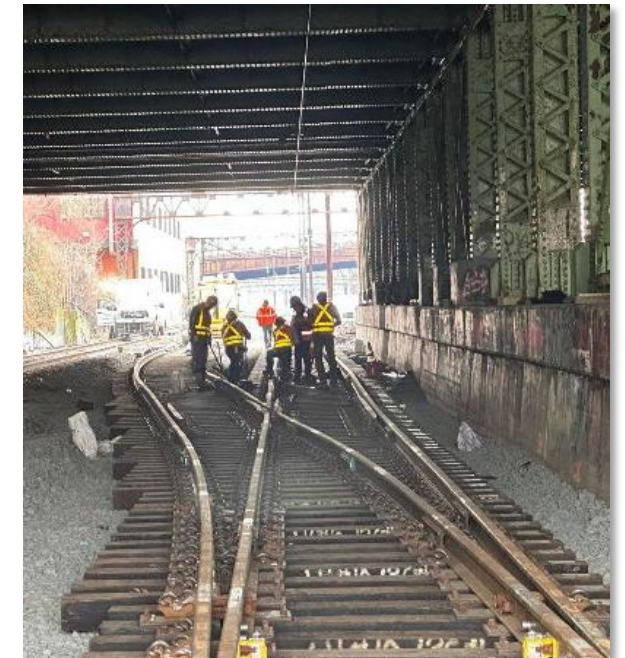
- Completed the Removal of 3mi of CSX Track 5
- Completed CSX-E Switch Installation
- Completed Track 2 Reprofilng



Plate C Overhead Catenary Structure (OCS)
Wire Raise Inspection



Demolition of Track 5



Installation of CSX-E Switch

Progress to Date

Van Nest



Van Nest OCS Foundations - 72%

Van Nest Drainage System - 39%

Bridges



Eastchester Rd Bridge - 25%

Bronxdale Ave Bridge - 15%

Retaining Walls



Retaining Wall 3 - 21%

Retaining Wall 2 - 60%

Retaining Wall 13 - 80%

Progress to Date: Leggett Interlocking Crossovers

Benefits

- Increased operational flexibility
- Enables extended track outages during construction
 - “Permanent LTO”

60% of Leggett Interlocking Complete To Date

- Completed OCS Foundation Installation
- 60% of OCS Portal Structures Installed
- 90% of Drainage System Installed
- Progressed Track and Signal Work
- Leggett Crossover special Track 1 work components Installed

Upcoming Milestones

- Commissioning of Leggett Interlocking in 2024



Drainage system installation near Leggett Interlocking

Project Schedule / Recovery Strategy

- Project Risks & Recovery Strategy
- Upcoming Work
- Street Level Impacts

Key Project Risks & Recovery Strategy

Railroad Operators Coordination

- Limited access and support availability of Force Account staff
- Regional schedule coordination

Potential Schedule Delay

- Time Impact Analysis / Recovery Schedule

Recovery Strategy

- Collaborating with Amtrak:
 - Second LTO in Spring 2024
 - Installing engineering controls to reduce Force Account needs
 - Increase Amtrak Force Account periods



UPCOMING WORK 2023-2024



COMMISSION LEGGETT CROSSOVER SPECIAL TRACK WORK COMPONENTS



COMMENCE MORRIS PARK
AND CO-OP CITY SITE
PREPARATION AND
FOUNDATIONS



COMPLETE OCS CAISSON
INSTALLATION AT VAN NEST, AND
COMMENCE PORTAL
INSTALLATION



COMPLETE MICROPILE
INSTALLATION AT
BRONXDALE AVE AND
EASTCHESTER RD BRIDGES



BEGIN OCS CAISSON
INSTALLATION AT HUNTS POINT
AND MORRIS PARK



COMMENCE DEMOLITION
WORK AT BRONXDALE AVE,
EASTCHESTER RD, PELHAM,
AND BRONX RIVER BRIDGES.



COMPLETE OCS PORTAL
INSTALLATION, SIGNAL WORK,
AND RETAINING WALLS AT
LEGGETT INTERLOCKING

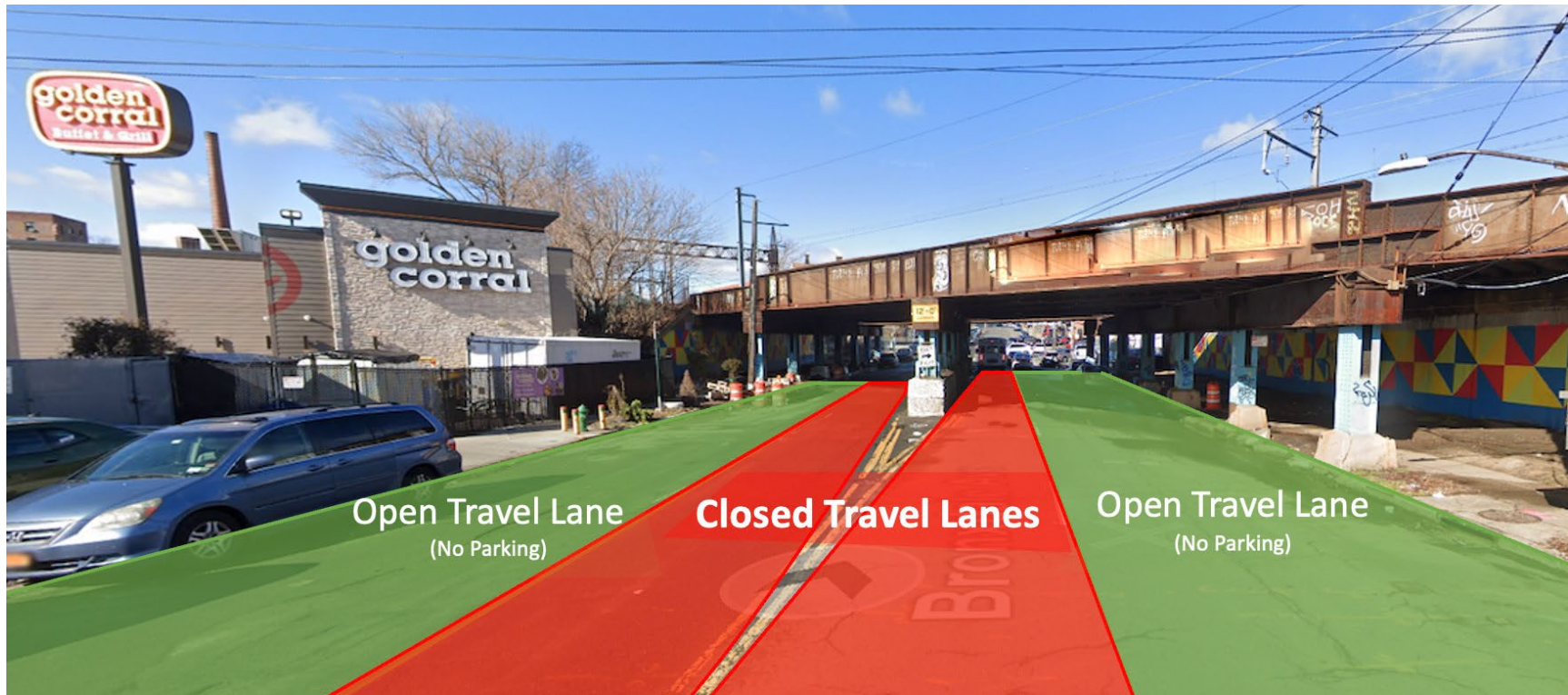
Street Level Impacts: Eastchester Rd

- Eastchester Rd will be reduced to one travel lane in each direction.
- Temporary parking restrictions and a change in traffic pattern on Eastchester Road near Bassett Avenue in both directions.
- Beginning on or about Tuesday, May 30, lasting approximately 6 months.



Street Level Impacts: Bronxdale Ave

- Bronxdale Ave will be reduced to one travel lane in each direction.
- Lane closures and temporary parking restrictions between Poplar St and Sackett Ave will be in place in both directions.
- Beginning on or about Sept. 25th, 2023, lasting approximately 6 months.



Community Engagement



Hunts Point Spring Mingle
May 18, 2023



Eminent Domain Procedure Law Public Hearing
June 22, 2022

And Many Other Local Stakeholders Including: Bronx COC, Greater Hunts Point EDC, Center for Bronx Non-Profits, Hunts Point COC, The Point CDC, and Hunts Point-Longwood CC.



Ongoing Meetings With Bronx Community Boards and the BWCC



Project Ground Breaking Press Event
Dec 9, 2022



Job Information Event
June 7, 2022

Contact Us



Telephone Hotline: 347-263-7837



Email: PSAOutreach@mtacd.org



Project Webpage: <https://new.mta.info/project/penn-station-access>



Sign-up for future updates and quarterly newsletters on the Project Webpage

An aerial photograph of a city, likely New York City, showing a dense urban landscape with numerous buildings, streets, and a large body of water in the background. A semi-transparent white box with a thin black border is centered over the image, containing the text "Thank You Questions?".

Thank You
Questions?