

CENTRAL BUSINESS DISTRICT (CBD) TOLLING PROGRAM

Appendix 4B.7, Transportation: Average Weekday Travel Times to the Manhattan CBD

2023

Tables

Table 4B.7-1.	Average Weekday Travel Time to the Manhattan CBD from the Bronx (minutes)	4B.7-1
Table 4B.7-2.	Average Weekday Travel Time to the Manhattan CBD from Brooklyn (minutes)	4B.7-2
Table 4B.7-3.	Average Weekday Travel Travel Time to the Manhattan CBD from Queens (minutes)	4B.7-3
Table 4B.7-4.	Average Weekday Travel Times to the Manhattan CBD from Staten Island (minutes)	4B.7-4
Table 4B.7-5.	Average Weekday Travel Times to the Manhattan CBD Before/After Peak of Pandemic - The Bronx (minutes)	4B.7-5
Table 4B.7-6.	Average Weekday Travel Time to the Manhattan CBD Before/After Peak of the Pandemic - Brooklyn (minutes).....	4B.7-6
Table 4B.7-7.	Average Weekday Travel Times to the Manhattan CBD Before/After Peak of Pandemic - Queens (minutes)	4B.7-7
Table 4B.7-8.	Average Weekday Travel Times to the Manhattan CBD Before/After Peak of Pandemic - Staten Island (minutes)	4B.7-8

Figures

Figure 4B.7-1.	Average Weekday Travel Times to the Manhattan CBD from the Bronx - AM, MD, PM, ON (minutes)	4B.7-5
Figure 4B.7-2.	Average Weekday Travel Times to the Manhattan CBD from Brooklyn - AM, MD, PM, ON (minutes)	4B.7-6
Figure 4B.7-3.	Average Weekday Travel Times to the Manhattan CBD from Queens - AM, MD, PM, ON	4B.7-7
Figure 4B.7-4.	Average Weekday Travel Times to the Manhattan CBD from Staten Island - AM, MD, PM, ON	4B.7-8

Table 4B.7-1. Average Weekday Travel Time to the Manhattan CBD from the Bronx (minutes)

YEAR	MONTH	AM	MD	PM	ON
2019	October	48.4	43.4	47.1	29.2
	November	45.5	44.1	47.6	28.4
	December	42.7	42.9	49.4	28.7
2020	January	42.5	36.9	38.6	27.5
	February	46.8	39.8	40.5	27.9
	March	36.7	32.3	31.7	25.3
	April	24.5	25.0	24.6	23.3
	May	27.3	28.7	27.8	24.8
	June	31.6	32.5	30.7	26.4
	July	33.1	34.3	32.9	26.0
	August	34.0	36.4	35.0	26.6
	September	41.6	37.9	35.5	26.9
	October	42.6	37.4	37.2	26.6
	November	35.2	35.3	35.4	26.0
	December	33.3	35.7	36.7	26.7
2021	January	33.5	32.9	33.1	25.8
	February	35.9	37.2	34.9	25.9
	March	36.6	36.6	36.2	25.9
	April	38.4	40.1	36.8	26.2
	May	40.2	41.2	41.4	26.7
	June	40.8	43.3	44.5	28.1
	July	37.3	40.4	41.4	27.6
	August	36.4	39.3	38.6	27.9
	September	44.1	41.1	40.5	27.8
	October	47.3	42.0	43.2	27.2
	November	42.0	41.4	42.7	27.2
	December	39.0	38.9	39.8	26.9
2022	January	37.9	34.6	34.6	25.4
	February	43.6	41.3	39.6	26.5
	March	45.2	40.3	39.8	27.0
	April	45.0	43.0	43.3	27.2
	May	46.4	46.3	46.7	28.0
	June	43.7	44.3	45.1	28.5

Source: NYCDOT FHV VMT/VHT Data and WSP Analysis - July 2022

Notes:

- 1 AM 6:00 a.m. to 10:00 a.m. (Morning Peak Period)
- 2 MD 10:00 a.m. to 4:00 p.m. (Midday)
- 3 PM 4:00 p.m. to 8:00 p.m. (Afternoon Peak Period)
- 4 ON 8:00 p.m. to 6:00 a.m. (Overnight)

Table 4B.7-2. Average Weekday Travel Time to the Manhattan CBD from Brooklyn (minutes)

YEAR	MONTH	AM	MD	PM	ON
2019	October	31.3	30.1	29.1	22.1
	November	30.6	30.1	29.2	21.9
	December	28.5	30.0	29.9	22.5
2020	January	28.3	26.3	25.8	21.0
	February	30.8	28.2	27.2	21.4
	March	27.0	25.2	23.7	20.7
	April	21.4	21.9	20.3	21.0
	May	24.2	24.0	21.6	21.3
	June	26.3	26.4	24.3	21.6
	July	27.1	27.8	24.4	19.9
	August	28.2	29.3	26.1	20.3
	September	30.6	30.0	26.8	20.9
	October	31.0	30.0	26.5	20.7
	November	28.8	28.0	26.2	20.9
	December	27.1	28.3	27.0	21.5
2021	January	26.1	26.3	24.0	21.0
	February	28.5	28.9	25.5	21.5
	March	28.4	29.6	25.7	21.1
	April	29.4	30.3	27.1	21.2
	May	30.2	31.5	28.2	21.6
	June	30.7	31.9	30.2	22.3
	July	30.2	31.5	30.5	22.7
	August	30.5	31.0	29.6	22.5
	September	32.9	32.0	30.0	21.9
	October	35.0	32.6	32.1	22.6
	November	32.7	32.6	32.9	22.2
	December	30.0	30.9	32.5	21.8
2022	January	30.1	28.6	26.8	20.9
	February	34.0	32.4	31.6	22.0
	March	34.1	32.3	31.2	22.6
	April	34.5	33.9	33.0	22.5
	May	35.6	34.9	34.7	22.8
	June	34.2	35.1	34.4	22.9

Source: NYCDOT FHV VMT/VHT Data and WSP Analysis - July 2022

Notes:

- 1 AM 6:00 a.m. to 10:00 a.m. (Morning Peak Period)
- 2 MD 10:00 a.m. to 4:00 p.m. (Midday)
- 3 PM 4:00 p.m. to 8:00 p.m. (Afternoon Peak Period)
- 4 ON 8:00 p.m. to 6:00 a.m. (Overnight)

Table 4B.7-3. Average Weekday Travel Time to the Manhattan CBD from Queens (minutes)

YEAR	MONTH	AM	MD	PM	ON
2019	October	44.5	43.9	45.9	30.9
	November	43.4	43.8	45.2	29.5
	December	40.4	44.6	46.0	29.2
2020	January	38.4	34.4	35.6	27.6
	February	42.0	37.0	38.2	28.1
	March	31.3	28.1	27.7	24.5
	April	21.1	21.0	20.5	21.0
	May	23.3	23.4	23.0	21.8
	June	27.0	25.6	24.9	22.8
	July	29.5	27.6	25.5	22.4
	August	29.9	30.0	28.5	22.9
	September	34.2	31.1	28.8	23.7
	October	34.4	31.1	29.3	24.2
	November	30.9	28.6	28.5	23.8
	December	28.0	29.3	29.4	24.2
2021	January	27.7	27.0	27.3	24.5
	February	29.6	29.5	27.6	24.0
	March	30.7	30.2	28.1	23.8
	April	33.0	33.1	30.0	24.4
	May	35.9	36.9	33.9	26.0
	June	36.7	38.9	36.9	26.7
	July	34.8	36.8	35.3	26.8
	August	35.2	37.0	34.7	26.9
	September	40.1	39.2	37.4	27.7
	October	42.6	40.6	39.6	27.2
	November	41.2	41.9	41.4	27.4
	December	36.6	38.7	39.7	26.7
2022	January	33.9	31.2	30.3	24.9
	February	41.0	39.1	36.6	26.2
	March	42.0	39.9	38.4	27.4
	April	42.5	43.6	43.2	28.0
	May	46.6	47.8	46.4	28.5
	June	43.2	46.1	45.5	28.4

Source: NYCDOT FHV VMT/VHT Data and WSP Analysis - July 2022

Notes:

- 1 AM 6:00 a.m. to 10:00 a.m. (Morning Peak Period)
- 2 MD 10:00 a.m. to 4:00 p.m. (Midday)
- 3 PM 4:00 p.m. to 8:00 p.m. (Afternoon Peak Period)
- 4 ON 8:00 p.m. to 6:00 a.m. (Overnight)

Table 4B.7-4. Average Weekday Travel Times to the Manhattan CBD from Staten Island (minutes)

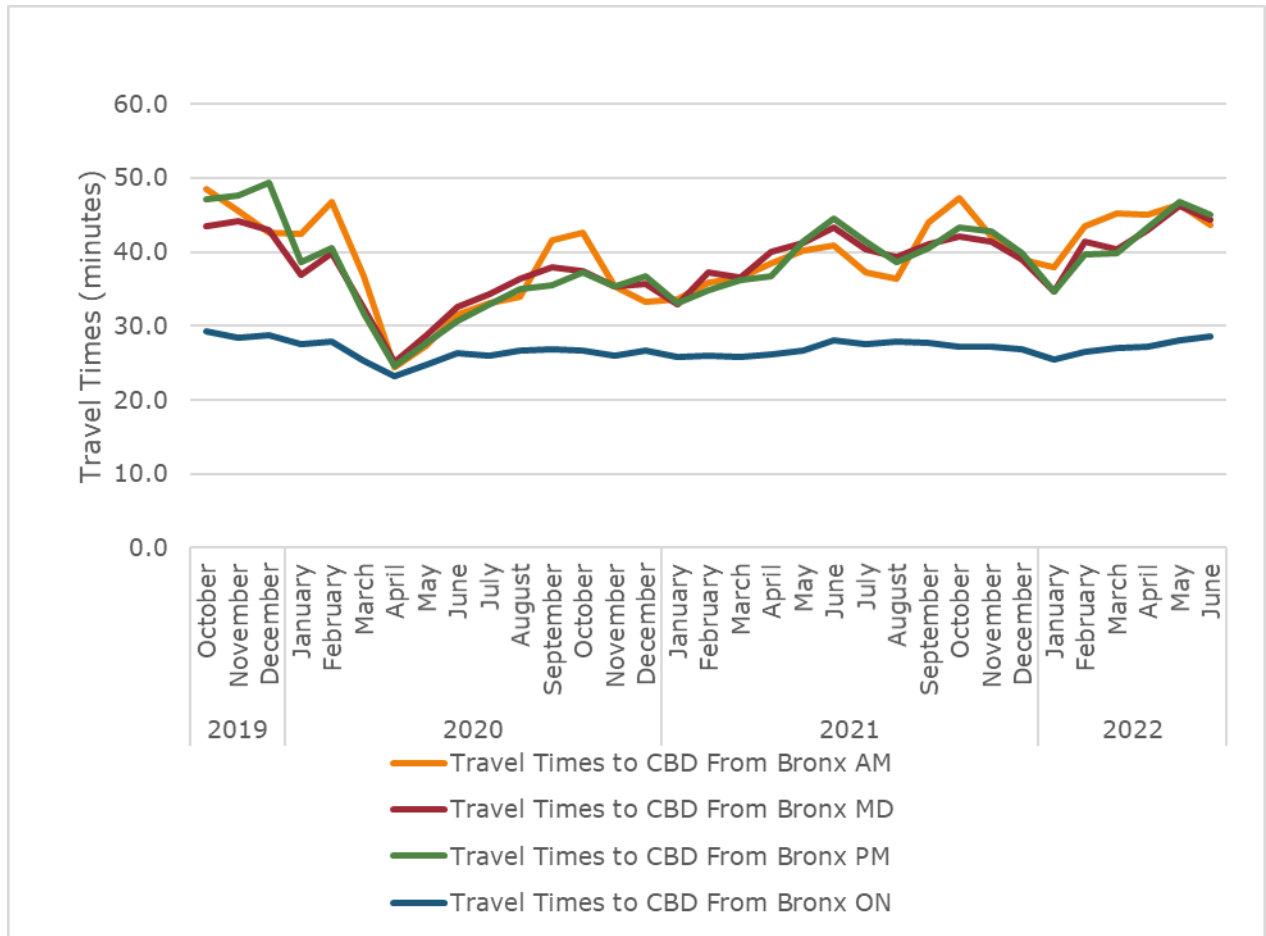
YEAR	MONTH	AM	MD	PM	ON
2019	October	54.9	51.7	53.4	40.3
	November	55.6	51.4	59.3	38.4
	December	55.1	55.5	62.3	39.8
2020	January	50.0	44.7	50.5	35.9
	February	54.3	45.5	50.8	35.7
	March	44.8	40.5	43.0	33.2
	April	33.2	36.3	38.1	34.2
	May	37.1	39.7	37.5	34.3
	June	38.7	41.9	39.8	33.4
	July	38.8	42.0	40.8	36.2
	August	39.9	45.8	39.8	33.3
	September	44.4	46.6	42.6	35.9
	October	44.9	45.7	43.1	35.4
	November	42.8	43.2	44.2	33.9
	December	39.7	45.1	45.2	34.0
2021	January	39.8	42.3	40.2	34.4
	February	43.9	43.8	42.0	34.6
	March	43.9	47.0	43.3	33.1
	April	43.4	46.8	46.0	34.5
	May	45.2	48.3	47.7	37.7
	June	46.3	49.2	52.3	36.8
	July	44.3	45.9	51.6	36.3
	August	42.8	46.1	51.0	36.6
	September	51.8	49.7	51.7	39.2
	October	65.0	53.4	58.1	40.6
	November	54.9	50.7	61.1	39.9
	December	47.1	49.0	60.6	37.5
2022	January	45.7	44.0	46.6	35.7
	February	53.8	47.7	52.8	36.7
	March	57.4	48.3	54.2	37.0
	April	57.6	50.0	56.7	37.2
	May	60.4	53.2	58.5	36.6
	June	55.7	56.1	63.1	38.1

Source: NYCDOT FHV VMT/VHT Data and WSP Analysis - July 2022

Notes:

- 1 AM 6:00 a.m. to 10:00 a.m. (Morning Peak Period)
- 2 MD 10:00 a.m. to 4:00 p.m. (Midday)
- 3 PM 4:00 p.m. to 8:00 p.m. (Afternoon Peak Period)
- 4 ON 8:00 p.m. to 6:00 a.m. (Overnight)

Figure 4B.7-1. Average Weekday Travel Times to the Manhattan CBD from the Bronx—AM, MD, PM, ON (minutes)



Source: NYCDOT FHV VMT/VMT Data and WSP Analysis—July 2022

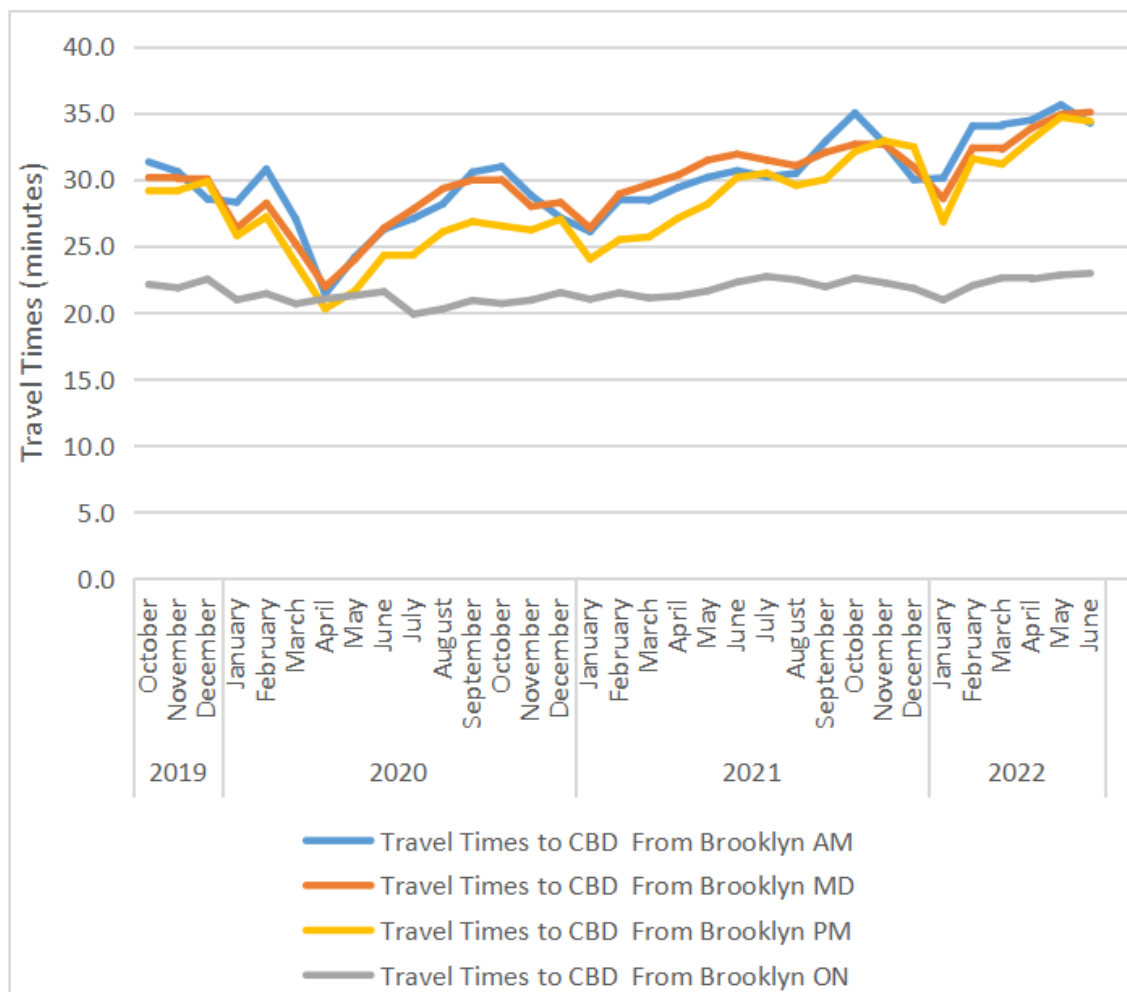
Note: Table 4B.7-1., Average Weekday Travel Time to the Manhattan CBD from the Bronx (minutes), contains the information shown in this chart.

Table 4B.7-5. Average Weekday Travel Times to the Manhattan CBD Before/After Peak of Pandemic—The Bronx (minutes)

PERIOD	MONTH	AM	MD	PM	ON
Pre-Pandemic	October–December 2019	45.5	43.5	48.0	28.8
Post-Pandemic	April–June 2022	45.0	44.5	45.0	27.9
	Change	-0.5	1.1	-3.0	-0.9

Source: NYCDOT FHV VMT/VMT Data and WSP Analysis—July 2022

Figure 4B.7-2. Average Weekday Travel Times to the Manhattan CBD from Brooklyn—AM, MD, PM, ON (minutes)



Source: NYCDOT FHV VMT/VMT Data and WSP Analysis—July 2022

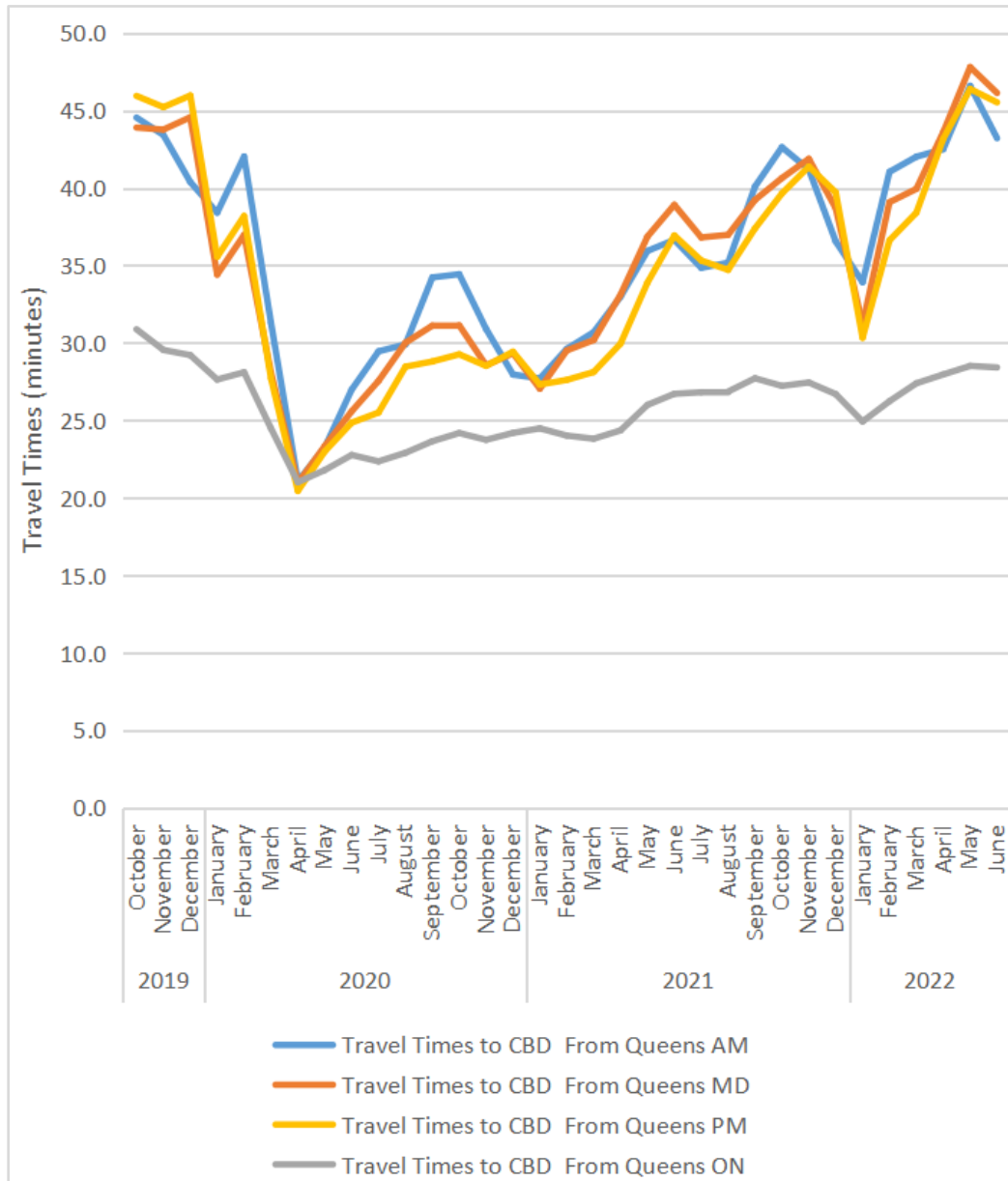
Note: Table 4B.7-2., Average Weekday Travel Time to the Manhattan CBD from Brooklyn (minutes), contains the information shown in this chart.

Table 4B.7-6. Average Weekday Travel Time to the Manhattan CBD Before/After Peak of the Pandemic—Brooklyn (minutes)

PERIOD	MONTH	AM	MD	PM	ON
Pre-Pandemic	October–December 2019	30.1	30.1	29.4	22.2
Post-Pandemic	April–June 2022	34.8	34.6	34.0	22.8
	Change	4.6	4.5	4.6	0.6

Source: NYCDOT FHV VMT/VMT Data and WSP Analysis—July 2022

Figure 4B.7-3. Average Weekday Travel Times to the Manhattan CBD from Queens—AM, MD, PM, ON



Source: NYCDOT FHV VMT/VMT Data and WSP Analysis—July 2022

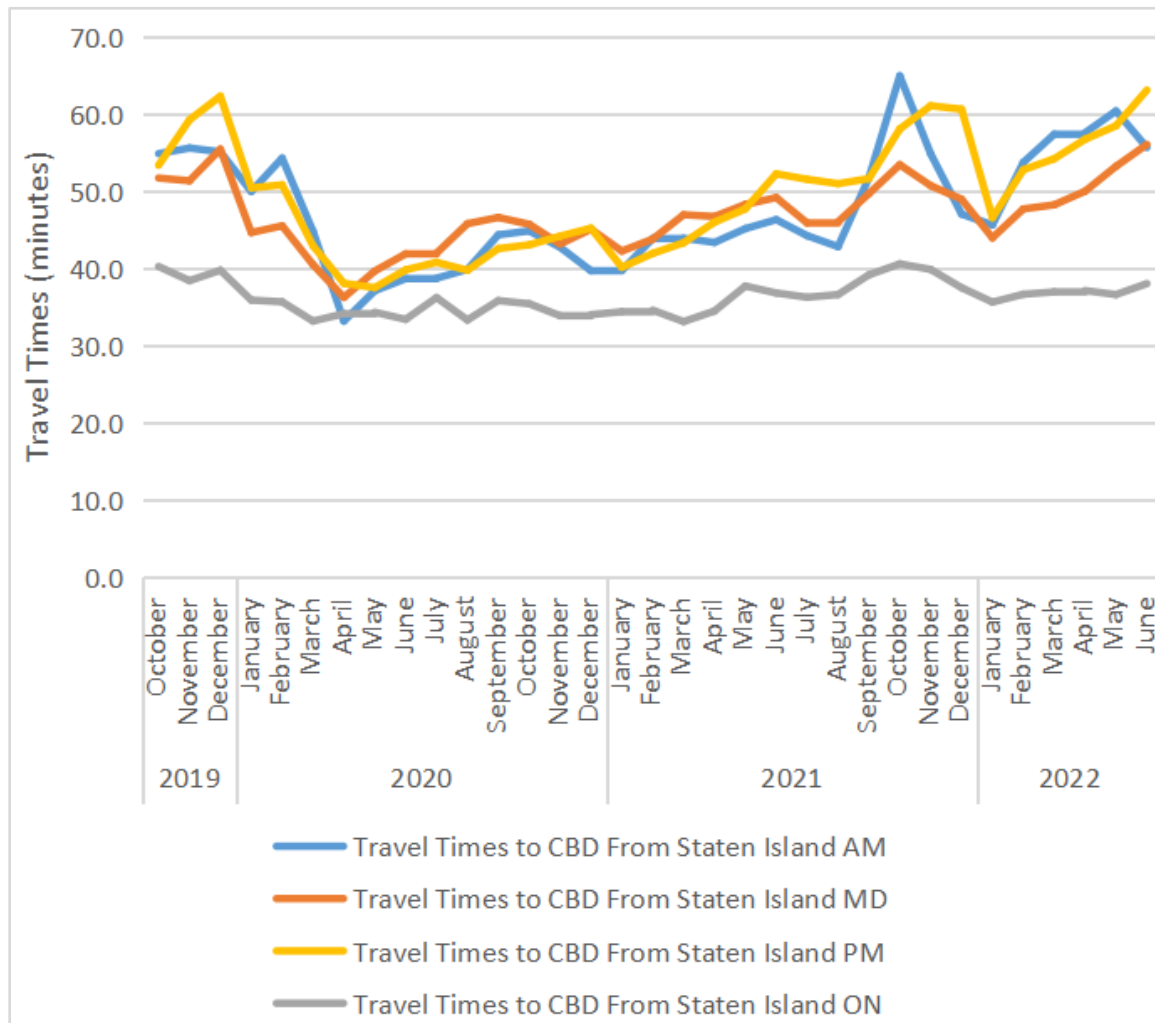
Note: Table 4B.7-3, Average Weekday Travel Time to the Manhattan CBD from Queens (minutes), contains the information shown in this chart.

Table 4B.7-7. Average Weekday Travel Times to the Manhattan CBD Before/After Peak of Pandemic—Queens (minutes)

PERIOD	MONTH	AM	MD	PM	ON
Pre-Pandemic	October–December 2019	42.8	44.1	45.7	29.9
Post-Pandemic	April–June 2022	44.1	45.8	45.0	28.3
	Change	1.3	1.8	-0.7	-1.6

Source: NYCDOT FHV VMT/VMT Data and WSP Analysis—July 2022

Figure 4B.7-4. Average Weekday Travel Times to the Manhattan CBD from Staten Island—AM, MD, PM, ON



Source: NYCDOT FHV VMT/VMT Data and WSP Analysis—July 2022

Note: Table 4B.7-3, Average Weekday Travel Time to the Manhattan CBD from Staten Island (minutes), contains the information that is shown in this chart.

Table 4B.7-8. Average Weekday Travel Times to the Manhattan CBD Before/After Peak of Pandemic—Staten Island (minutes)

PERIOD	MONTH	AM	MD	PM	ON
Pre-Pandemic	October–December 2019	55.2	52.9	58.3	39.5
Post-Pandemic	April–June 2022	57.9	53.1	59.5	37.3
	Change	2.7	0.3	1.1	-2.2

Source: NYCDOT FHV VMT/VMT Data and WSP Analysis—July 2022