

**LEGEND:**

- PROPOSED TRACK - NORTH OF HOWARD BEACH
- PROPOSED TRACK - SOUTH OF HOWARD BEACH
- PROPOSED TRACK - ROCKAWAY BEACH BRANCH



Systra Engineering, Inc.  
520 8th Avenue, Suite 2100  
New York, NY 10018

CONCEPTUAL  
NOT FOR  
CONSTRUCTION

LONG ISLAND RAIL ROAD  
ROCKAWAY BEACH BRANCH /JFK AIRPORT ONE-SEAT RAIL STUDY  
ROCKAWAY BEACH BRANCH /HOWARD BEACH ALIGNMENT LAYOUT  
EXHIBIT 1, SHEET 1 OF 4

SCALE: AS NOTED

DATE: DECEMBER 2017



**LEGEND:**

- PROPOSED TRACK - NORTH OF HOWARD BEACH
- PROPOSED TRACK - SOUTH OF HOWARD BEACH
- PROPOSED TRACK - ROCKAWAY BEACH BRANCH

**SYSTRA**

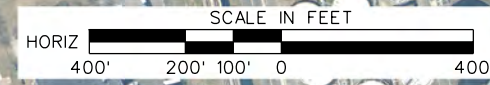
Systra Engineering, Inc.  
520 8th Avenue, Suite 2100  
New York, NY 10018

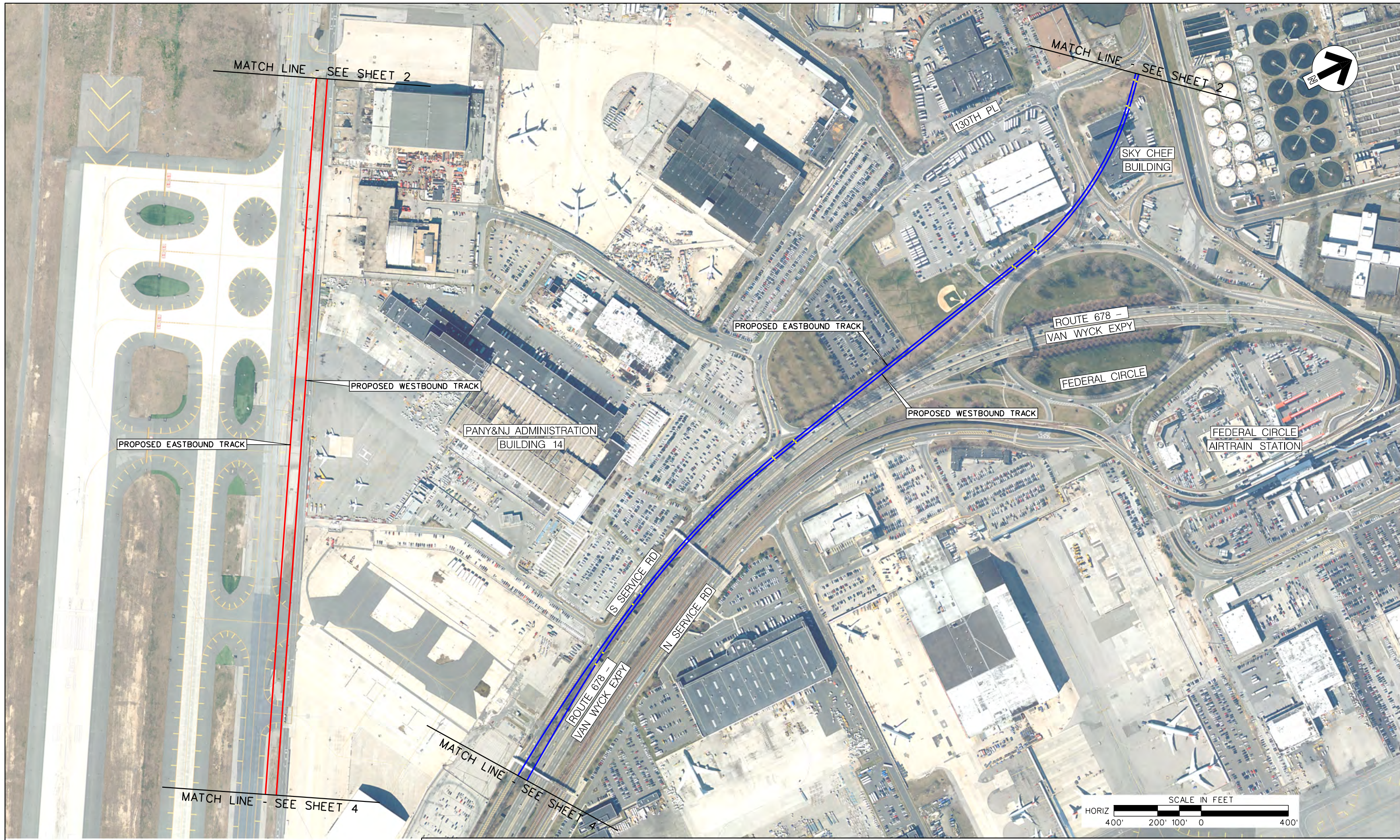
CONCEPTUAL  
NOT FOR  
CONSTRUCTION

LONG ISLAND RAIL ROAD  
ROCKAWAY BEACH BRANCH /JFK AIRPORT ONE-SEAT RAIL STUDY  
ROCKAWAY BEACH BRANCH /HOWARD BEACH ALIGNMENT LAYOUT  
EXHIBIT 1, SHEET 2 OF 4

SCALE: AS NOTED

DATE: DECEMBER 2017





**LEGEND:**

- PROPOSED TRACK - NORTH OF HOWARD BEACH
- PROPOSED TRACK - SOUTH OF HOWARD BEACH
- PROPOSED TRACK - ROCKAWAY BEACH BRANCH

**SYSTRA**

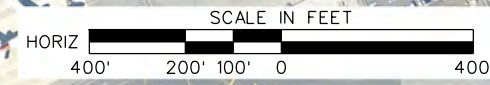
Systra Engineering, Inc.  
520 8th Avenue, Suite 2100  
New York, NY 10018

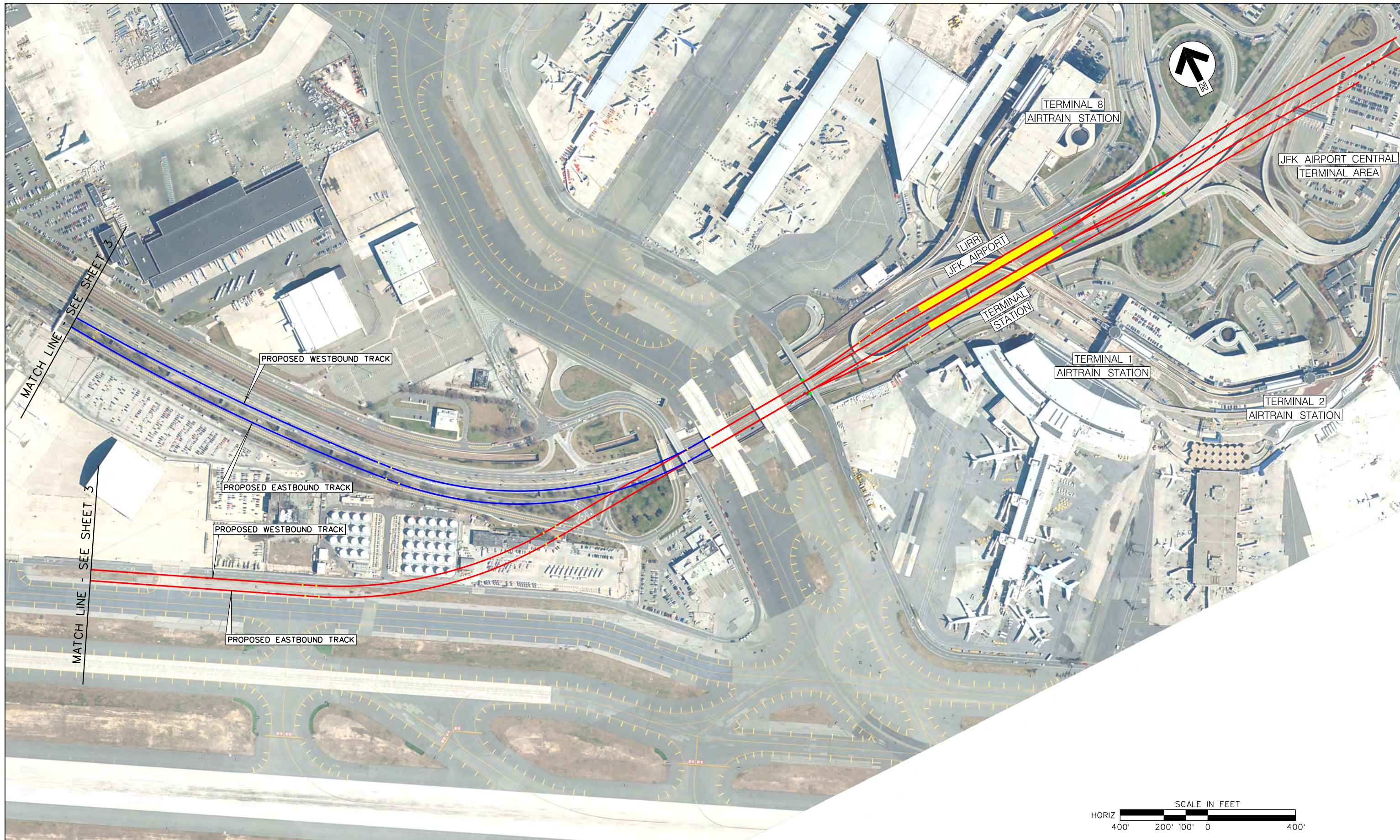
CONCEPTUAL  
NOT FOR  
CONSTRUCTION

LONG ISLAND RAIL ROAD  
ROCKAWAY BEACH BRANCH /JFK AIRPORT ONE-SEAT RAIL STUDY  
ROCKAWAY BEACH BRANCH /HOWARD BEACH ALIGNMENT LAYOUT  
EXHIBIT 1, SHEET 3 OF 4

SCALE: \_\_\_\_\_ AS NOTED

DATE: \_\_\_\_\_ DECEMBER 2017





**LEGEND:**

- PROPOSED TRACK - NORTH OF HOWARD BEACH
- PROPOSED TRACK - SOUTH OF HOWARD BEACH
- PROPOSED TRACK - ROCKAWAY BEACH BRANCH

**SYSTRA**

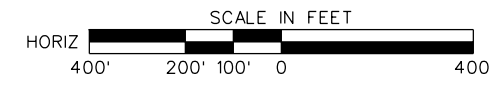
Systra Engineering, Inc.  
520 8th Avenue, Suite 2100  
New York, NY 10018

CONCEPTUAL  
NOT FOR  
CONSTRUCTION

LONG ISLAND RAIL ROAD  
ROCKAWAY BEACH BRANCH /JFK AIRPORT ONE-SEAT RAIL STUDY  
ROCKAWAY BEACH BRANCH /HOWARD BEACH ALIGNMENT LAYOUT  
EXHIBIT 1, SHEET 4 OF 4

SCALE: AS NOTED

DATE: DECEMBER 2017





**LEGEND:**

- PROPOSED TRACK - VIA CARGO PLAZA
- PROPOSED TRACK - VIA JFK EXPRESSWAY

**SYSTRA**

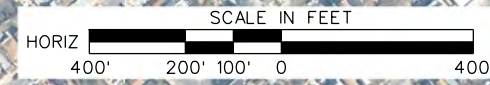
Systra Engineering, Inc.  
520 8th Avenue, Suite 2100  
New York, NY 10018

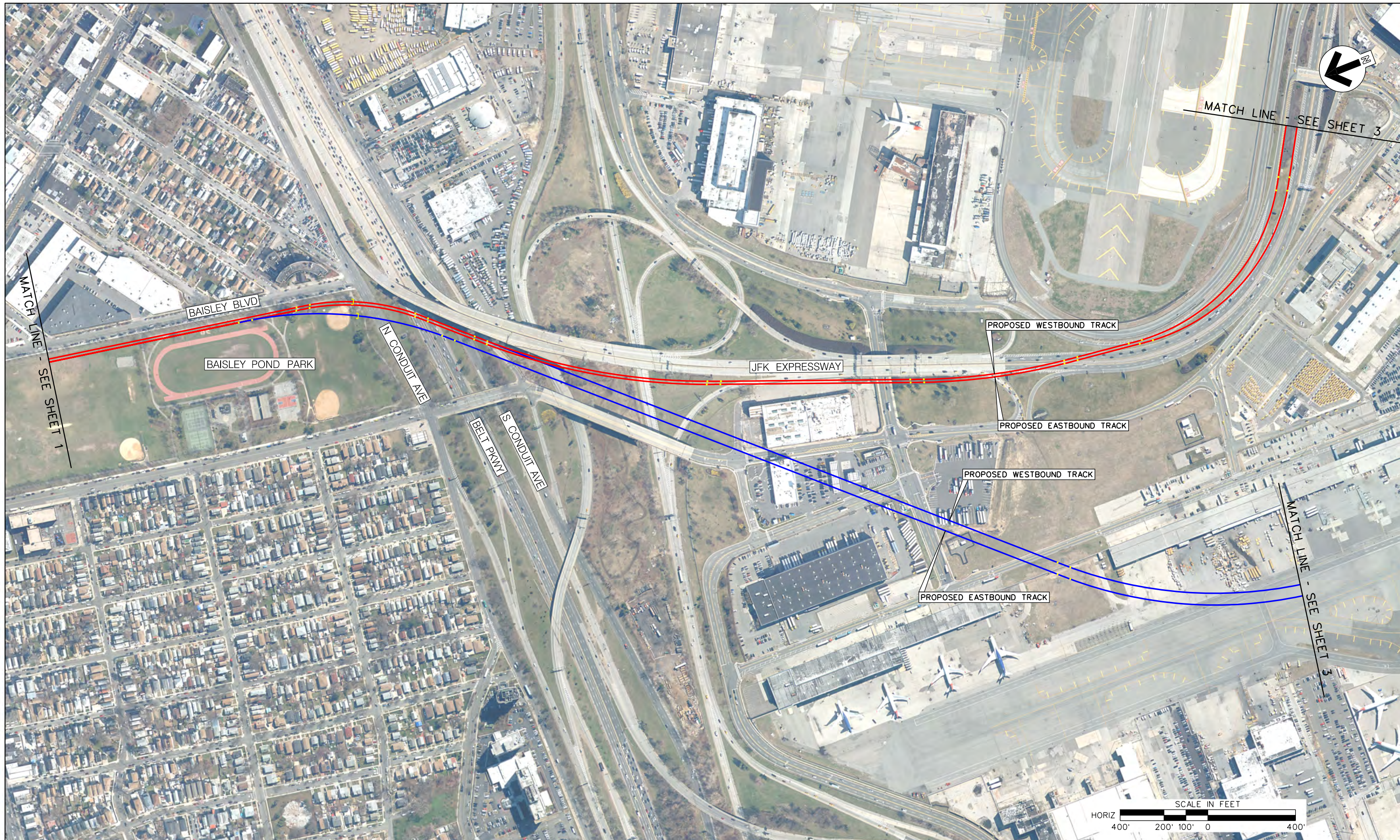
CONCEPTUAL  
NOT FOR  
CONSTRUCTION

LONG ISLAND RAIL ROAD  
ROCKAWAY BEACH BRANCH /JFK AIRPORT ONE-SEAT RAIL STUDY  
FAR ROCKAWAY BRANCH /BAISLEY BLVD ALIGNMENT LAYOUT  
EXHIBIT 2, SHEET 1 OF 3

SCALE: 1" = 400'

DATE: DECEMBER 2017





**LEGEND:**

- PROPOSED TRACK - VIA CARGO PLAZA
- PROPOSED TRACK - VIA JFK EXPRESSWAY

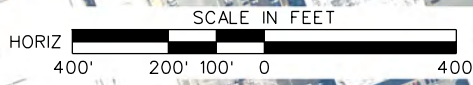


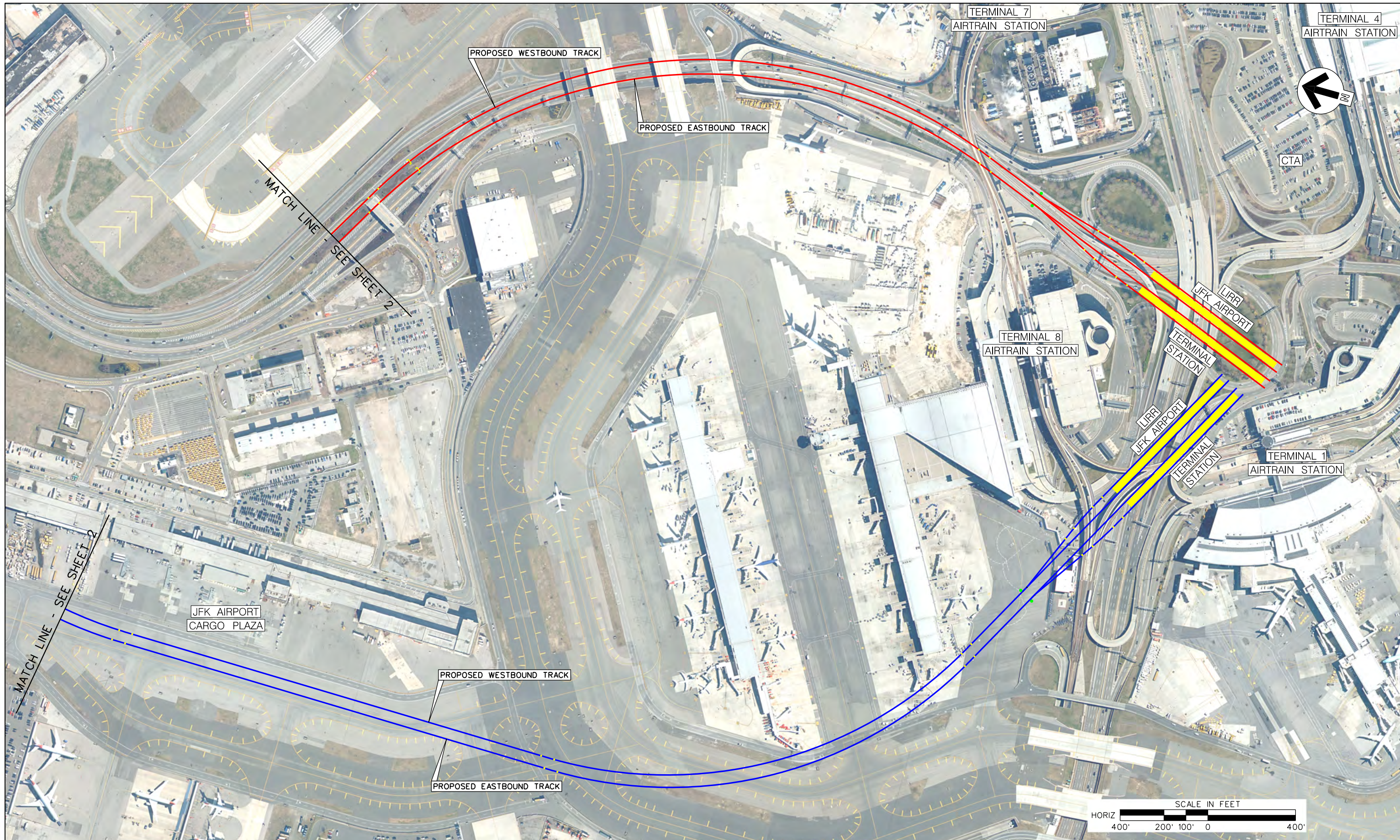
CONCEPTUAL  
NOT FOR  
CONSTRUCTION

LONG ISLAND RAIL ROAD  
ROCKAWAY BEACH BRANCH /JFK AIRPORT ONE-SEAT RAIL STUDY  
FAR ROCKAWAY BRANCH /BAISLEY BLVD ALIGNMENT LAYOUT  
EXHIBIT 2, SHEET 2 OF 3

SCALE: 1" = 400'

DATE: DECEMBER 2017





**LEGEND:**

- PROPOSED TRACK - VIA CARGO PLAZA
- PROPOSED TRACK - VIA JFK EXPRESSWAY

**SYSTRA**

Systra Engineering, Inc.  
520 8th Avenue, Suite 2100  
New York, NY 10018

CONCEPTUAL  
NOT FOR  
CONSTRUCTION

LONG ISLAND RAIL ROAD  
ROCKAWAY BEACH BRANCH /JFK AIRPORT ONE-SEAT RAIL STUDY  
FAR ROCKAWAY BRANCH /BAISLEY BLVD ALIGNMENT LAYOUT  
EXHIBIT 2, SHEET 3 OF 3

SCALE: 1" = 400'

DATE: DECEMBER 2017



**LEGEND:**

- PROPOSED TRACK - HYBRID WESTBOUND
- PROPOSED TRACK - HYBRID EASTBOUND
- PROPOSED TRACK - HYBRID INBOUND
- PROPOSED TRACK - HYBRID OUTBOUND

**SYSTRA**

Systra Engineering, Inc.  
520 8th Avenue, Suite 2100  
New York, NY 10018

CONCEPTUAL  
NOT FOR  
CONSTRUCTION

LONG ISLAND RAIL ROAD  
ROCKAWAY BEACH BRANCH /JFK AIRPORT ONE-SEAT RAIL STUDY  
HYBRID ALIGNMENT LAYOUT  
EXHIBIT 3

SCALE: AS NOTED

DATE: DECEMBER 2017

