

- LEGEND:
- EXISTING TRACK
 - PROPOSED TRACK
 - EXISTING GROUND
 - UG BRIDGE
 - VIADUCT
 - TUNNEL WALL/RETAINING WALL

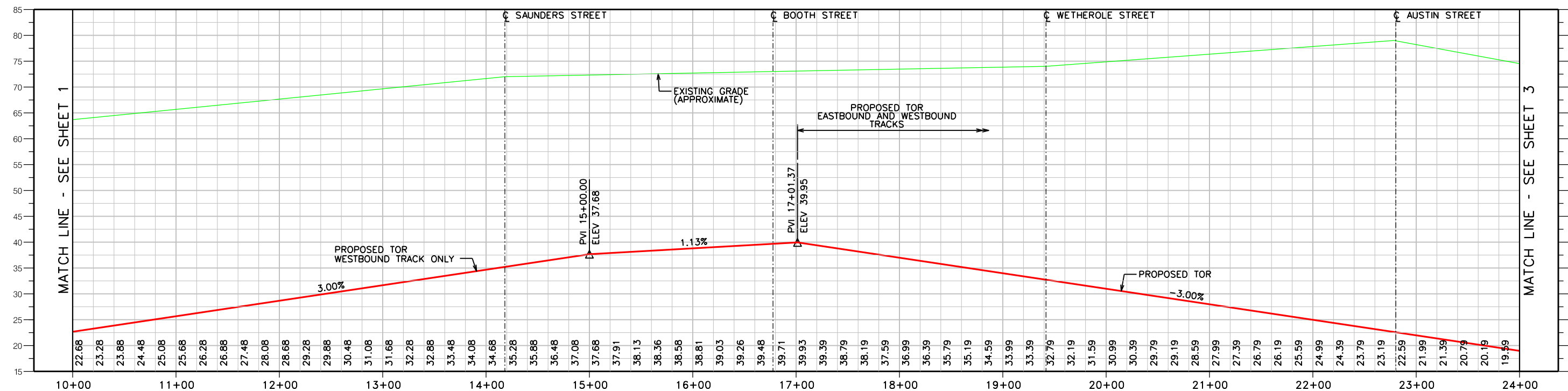
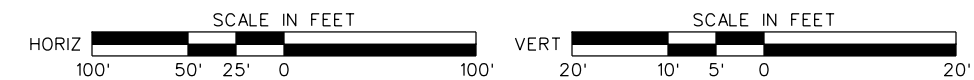
SYSTRA
 Systra Engineering, Inc.
 520 8th Avenue, Suite 2100
 New York, NY 10018

CONCEPTUAL
 NOT FOR
 CONSTRUCTION

LONG ISLAND RAIL ROAD
 RESTORATION OF THE ROCKAWAY BEACH BRANCH
 NYCT ALIGNMENT LAYOUT
 SHEET 1 OF 16

SCALE: AS NOTED

DATE: OCTOBER 2017



LEGEND:

- - - EXISTING TRACK
- PROPOSED TRACK
- EXISTING GROUND
- UG BRIDGE
- VIADUCT
- TUNNEL WALL / RETAINING WALL

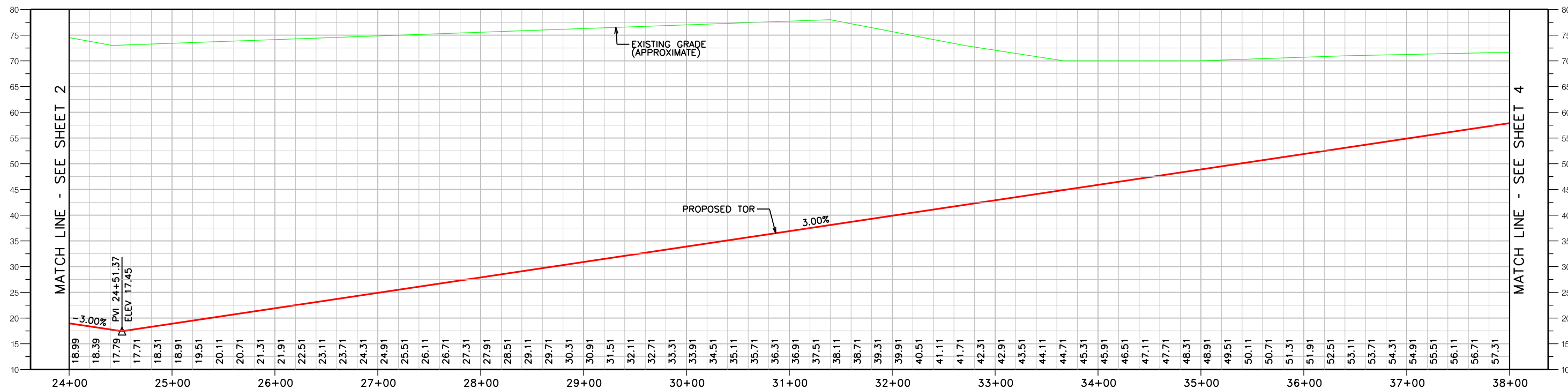
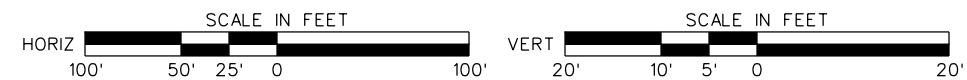
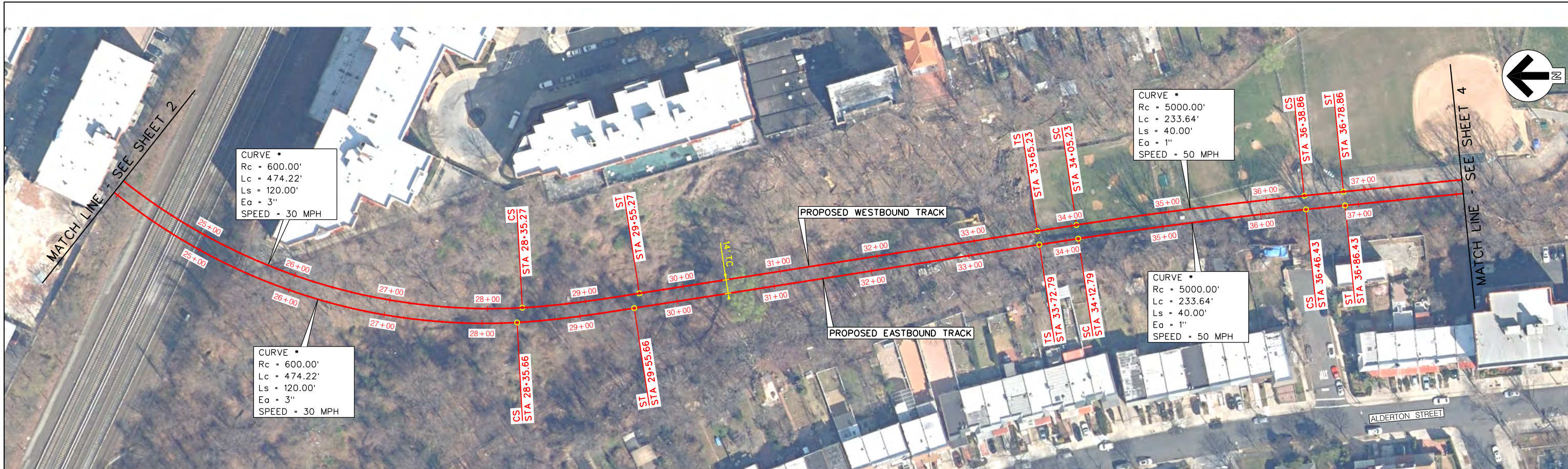
SYSTRA
 Systra Engineering, Inc.
 520 8th Avenue, Suite 2100
 New York, NY 10018

CONCEPTUAL
 NOT FOR
 CONSTRUCTION

LONG ISLAND RAIL ROAD
 RESTORATION OF THE ROCKAWAY BEACH BRANCH
 NYCT ALIGNMENT LAYOUT
 SHEET 2 OF 16

SCALE: AS NOTED
 DATE: OCTOBER 2017





LEGEND:

- - - EXISTING TRACK
- PROPOSED TRACK
- EXISTING GROUND
- UG BRIDGE
- VIADUCT
- TUNNEL WALL/
RETAINING WALL

SYSTRA

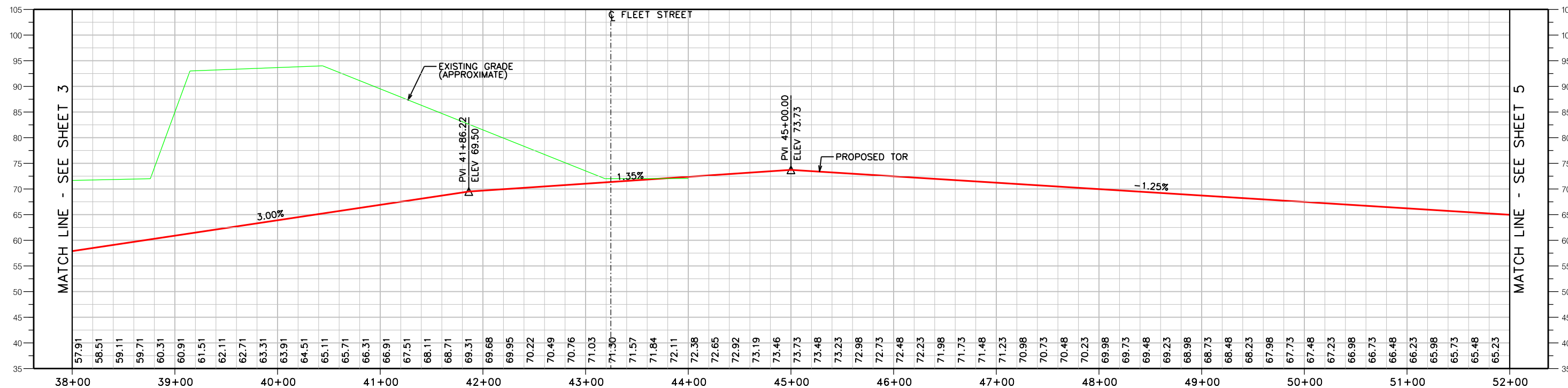
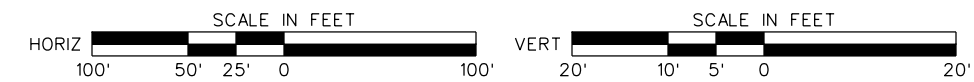
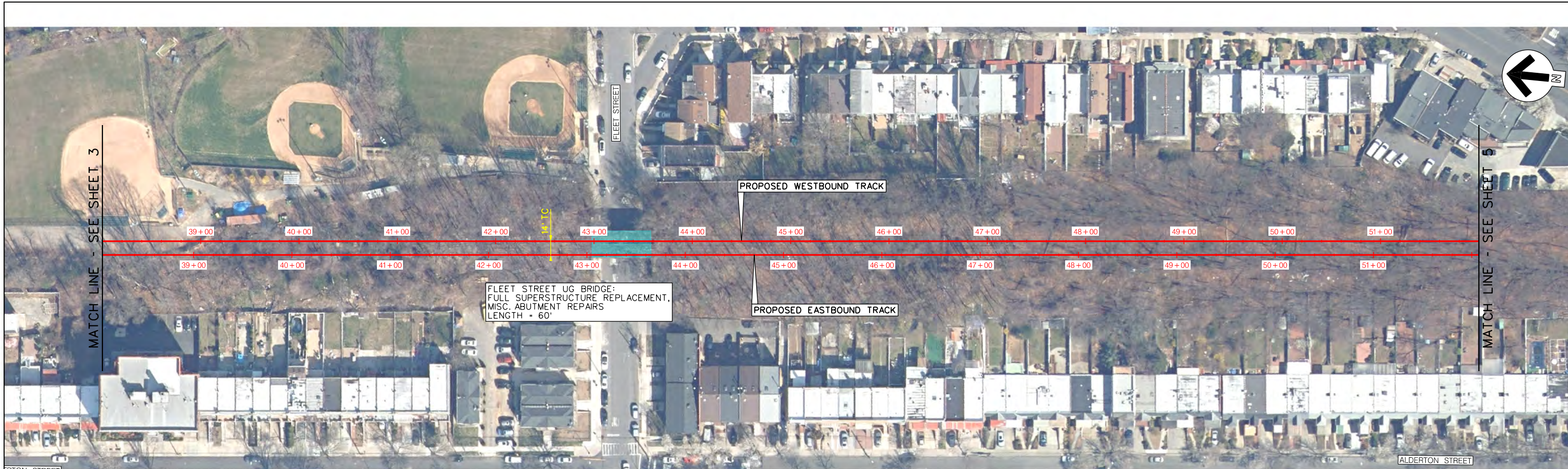
Systra Engineering, Inc.
520 8th Avenue, Suite 2100
New York, NY 10018

CONCEPTUAL
NOT FOR
CONSTRUCTION

LONG ISLAND RAIL ROAD
RESTORATION OF THE ROCKAWAY BEACH BRANCH
NYCT ALIGNMENT LAYOUT
SHEET 3 OF 16

SCALE: AS NOTED

DATE: OCTOBER 2017



LEGEND:

- - - EXISTING TRACK
- PROPOSED TRACK
- EXISTING GROUND
- UG BRIDGE
- VIADUCT
- TUNNEL WALL/RETAINING WALL



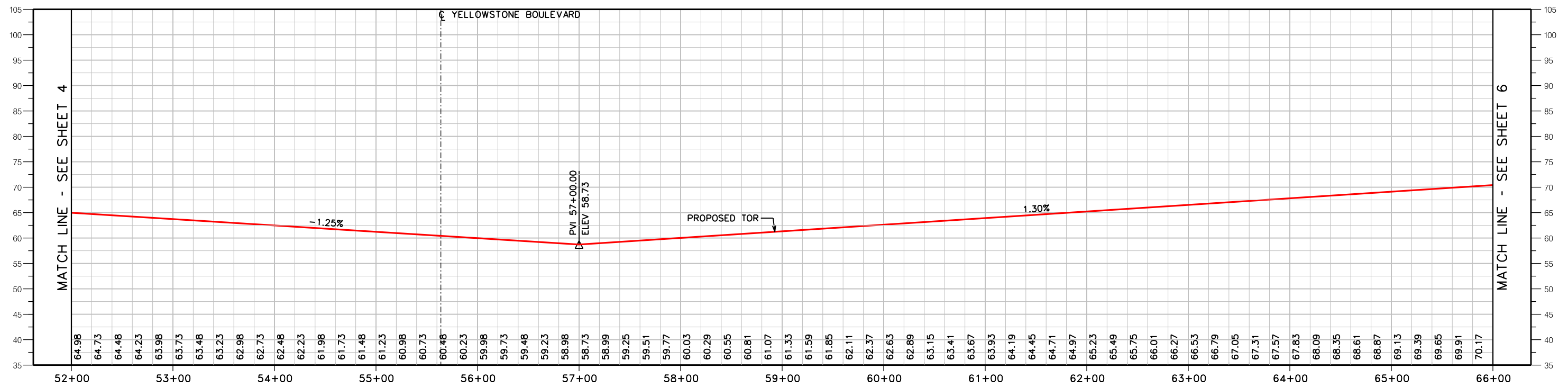
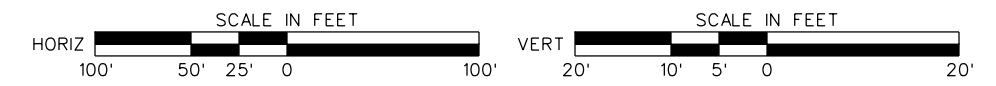
Systra Engineering, Inc.
520 8th Avenue, Suite 2100
New York, NY 10018

CONCEPTUAL
NOT FOR
CONSTRUCTION

LONG ISLAND RAIL ROAD
RESTORATION OF THE ROCKAWAY BEACH BRANCH
NYCT ALIGNMENT LAYOUT
SHEET 4 OF 16

SCALE: AS NOTED

DATE: OCTOBER 2017



LEGEND:

- - - EXISTING TRACK
- PROPOSED TRACK
- EXISTING GROUND
- UG BRIDGE
- VIADUCT
- TUNNEL WALL/RETAINING WALL

SYSTRA

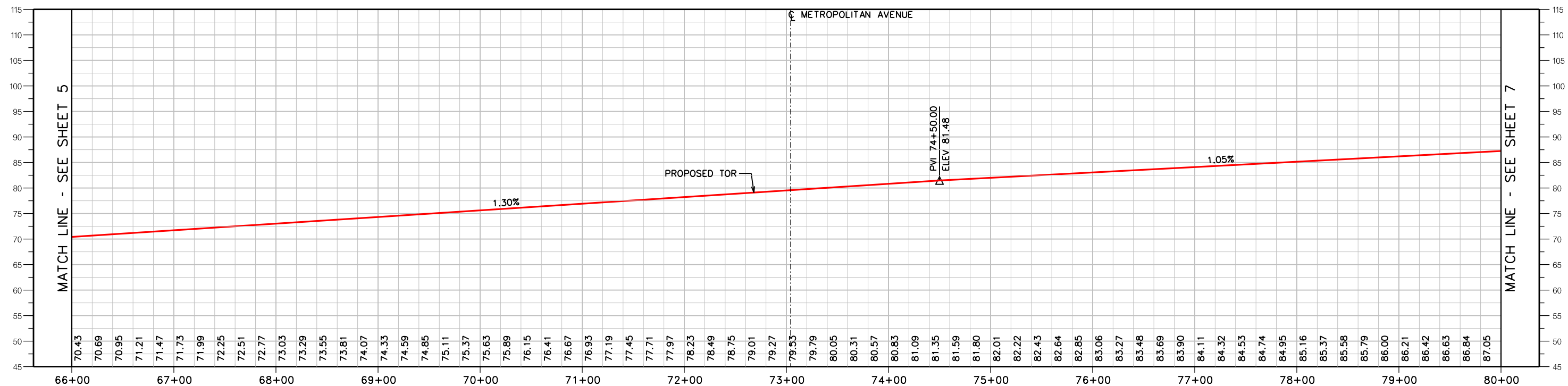
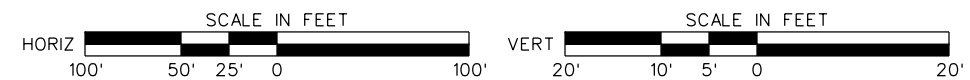
Systra Engineering, Inc.
520 8th Avenue, Suite 2100
New York, NY 10018

CONCEPTUAL
NOT FOR
CONSTRUCTION

LONG ISLAND RAIL ROAD
RESTORATION OF THE ROCKAWAY BEACH BRANCH
NYCT ALIGNMENT LAYOUT
SHEET 5 OF 16

SCALE: AS NOTED

DATE: OCTOBER 2017



LEGEND:

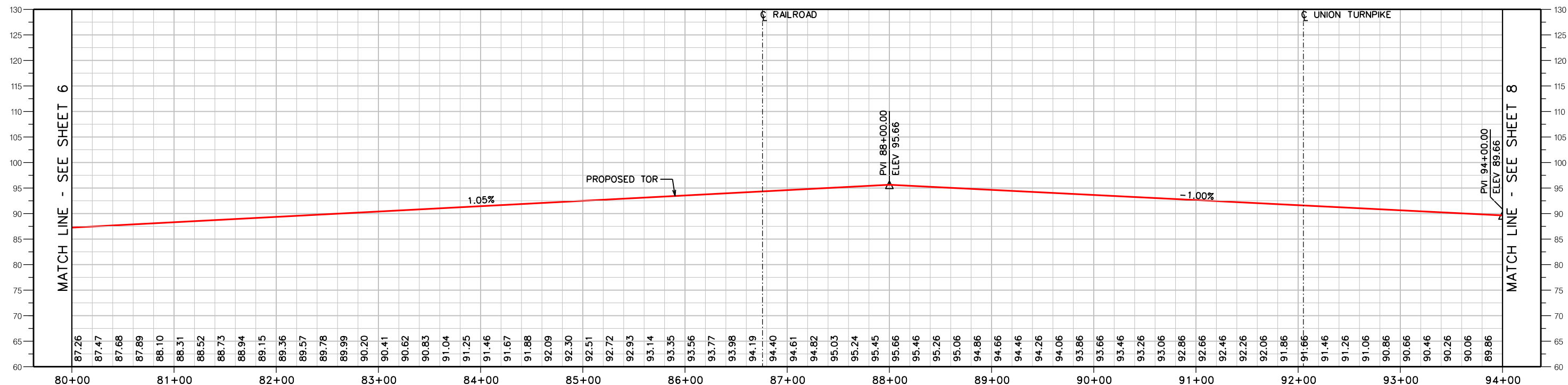
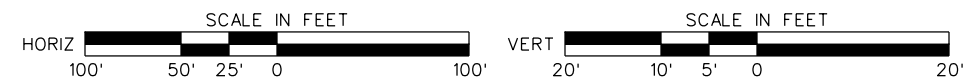
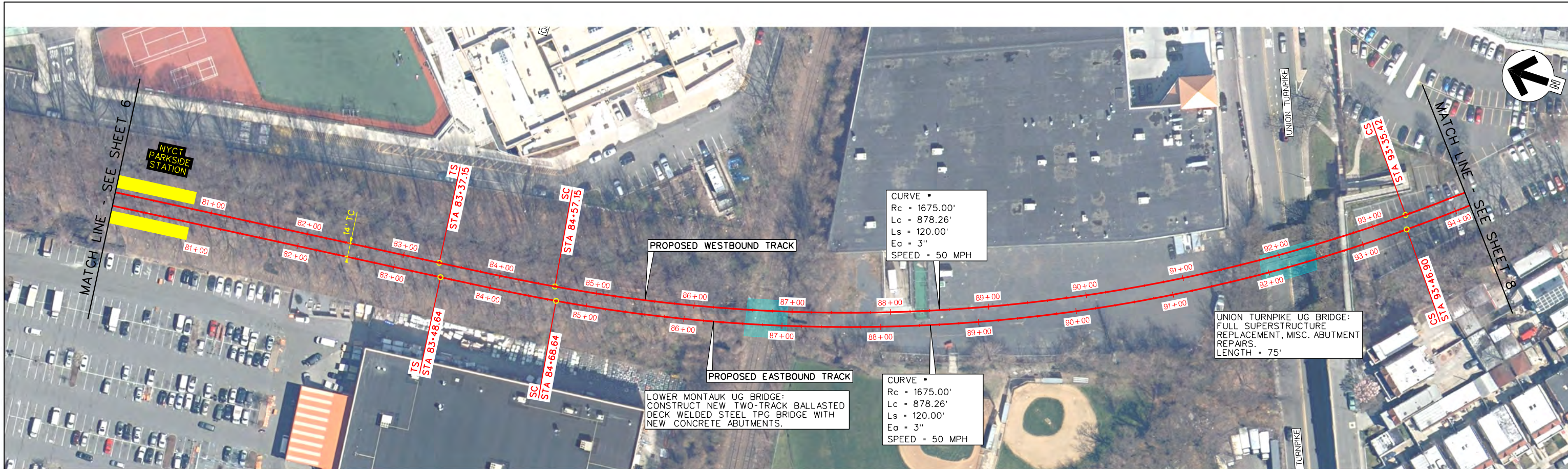
- - - EXISTING TRACK
- PROPOSED TRACK
- EXISTING GROUND
- UG BRIDGE
- VIADUCT
- TUNNEL WALL/RETAINING WALL

SYSTRA
 Systra Engineering, Inc.
 520 8th Avenue, Suite 2100
 New York, NY 10018

CONCEPTUAL
 NOT FOR
 CONSTRUCTION

LONG ISLAND RAIL ROAD
 RESTORATION OF THE ROCKAWAY BEACH BRANCH
 NYCT ALIGNMENT LAYOUT
 SHEET 6 OF 16

SCALE: AS NOTED
 DATE: OCTOBER 2017



LEGEND:

- - - EXISTING TRACK
- PROPOSED TRACK
- EXISTING GROUND
- UG BRIDGE
- VIADUCT
- TUNNEL WALL/RETAINING WALL



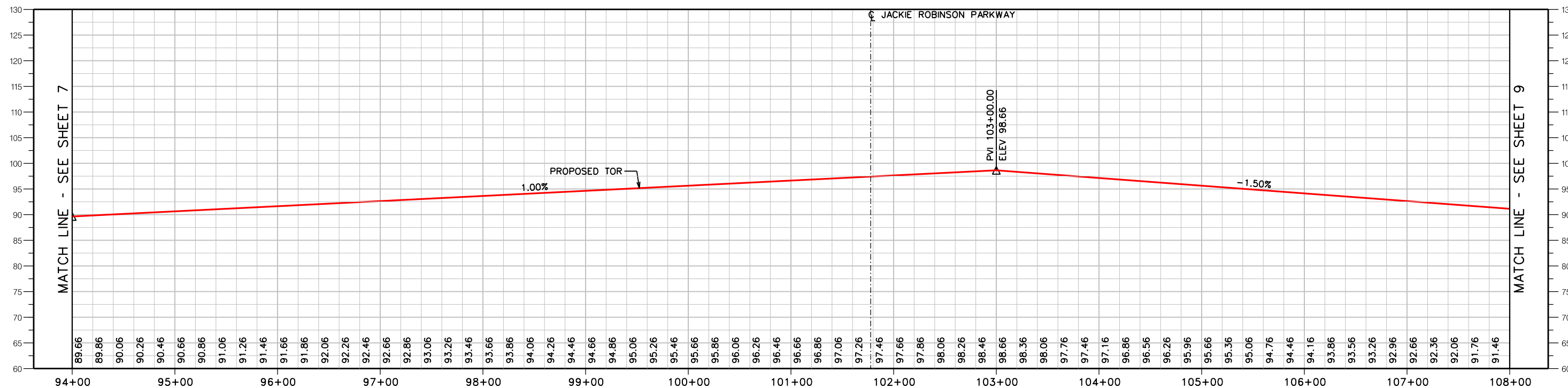
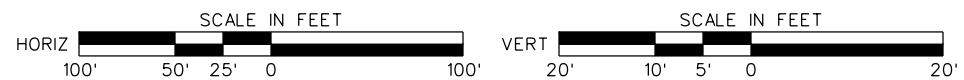
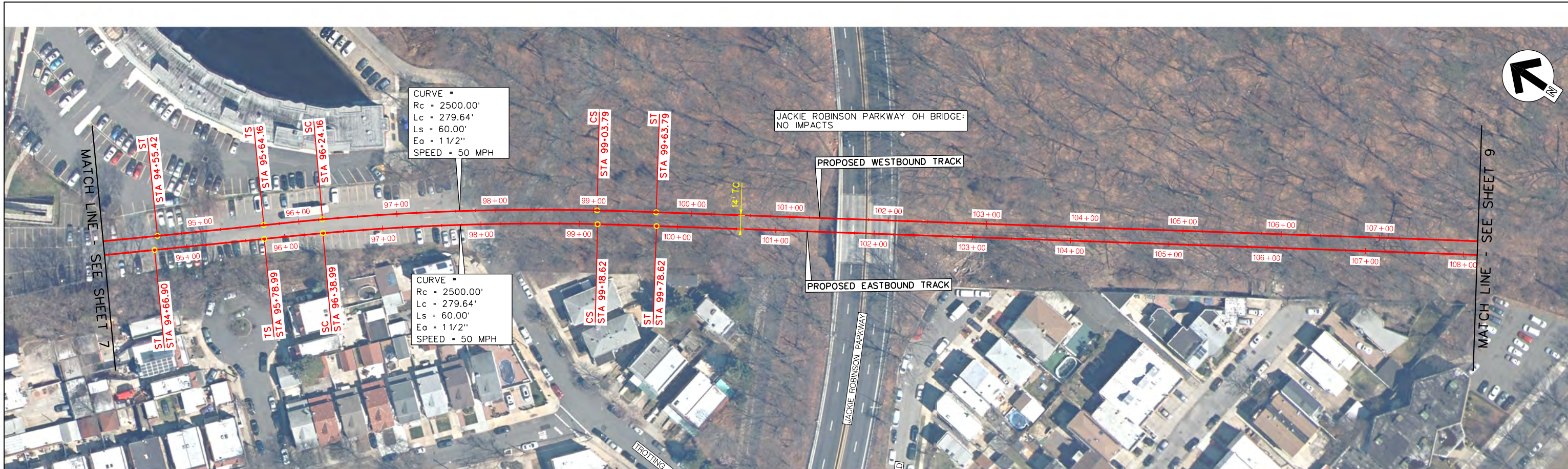
Systra Engineering, Inc.
520 8th Avenue, Suite 2100
New York, NY 10018

CONCEPTUAL
NOT FOR
CONSTRUCTION

LONG ISLAND RAIL ROAD
RESTORATION OF THE ROCKAWAY BEACH BRANCH
NYCT ALIGNMENT LAYOUT
SHEET 7 OF 16

SCALE: AS NOTED

DATE: OCTOBER 2017



LEGEND:

- - - EXISTING TRACK
- PROPOSED TRACK
- EXISTING GROUND
- UG BRIDGE
- VIADUCT
- TUNNEL WALL/
RETAINING WALL

SYSTRA

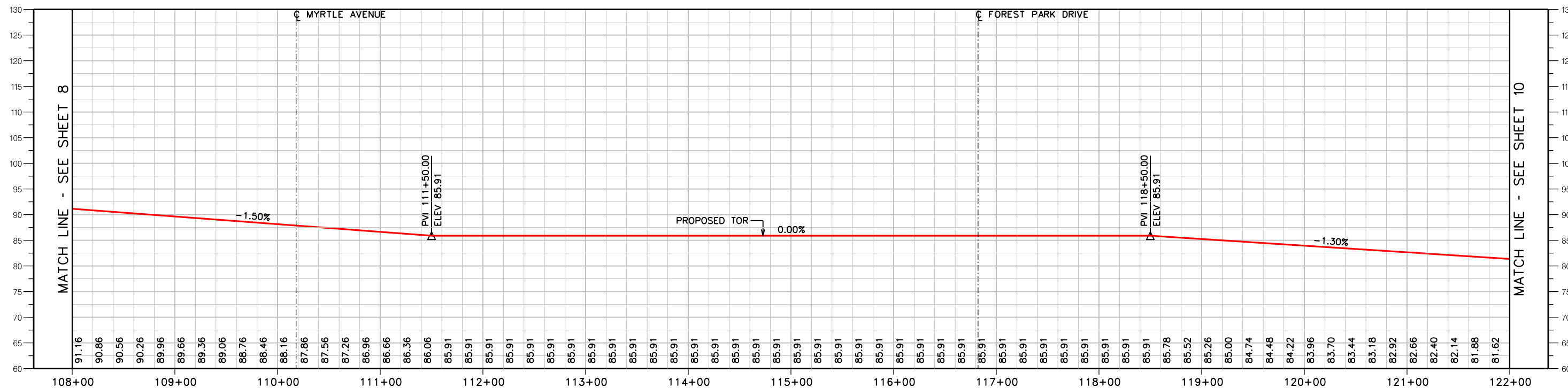
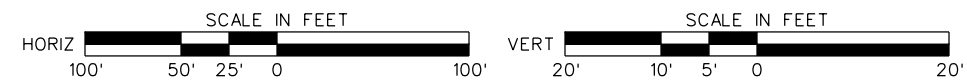
Systra Engineering, Inc.
 520 8th Avenue, Suite 2100
 New York, NY 10018

CONCEPTUAL
 NOT FOR
 CONSTRUCTION

LONG ISLAND RAIL ROAD
 RESTORATION OF THE ROCKAWAY BEACH BRANCH
 NYCT ALIGNMENT LAYOUT
 SHEET 8 OF 16

SCALE: AS NOTED

DATE: OCTOBER 2017



LEGEND:

- - - EXISTING TRACK
- PROPOSED TRACK
- EXISTING GROUND
- UG BRIDGE
- VIADUCT
- TUNNEL WALL/
RETAINING WALL

SYSTRA

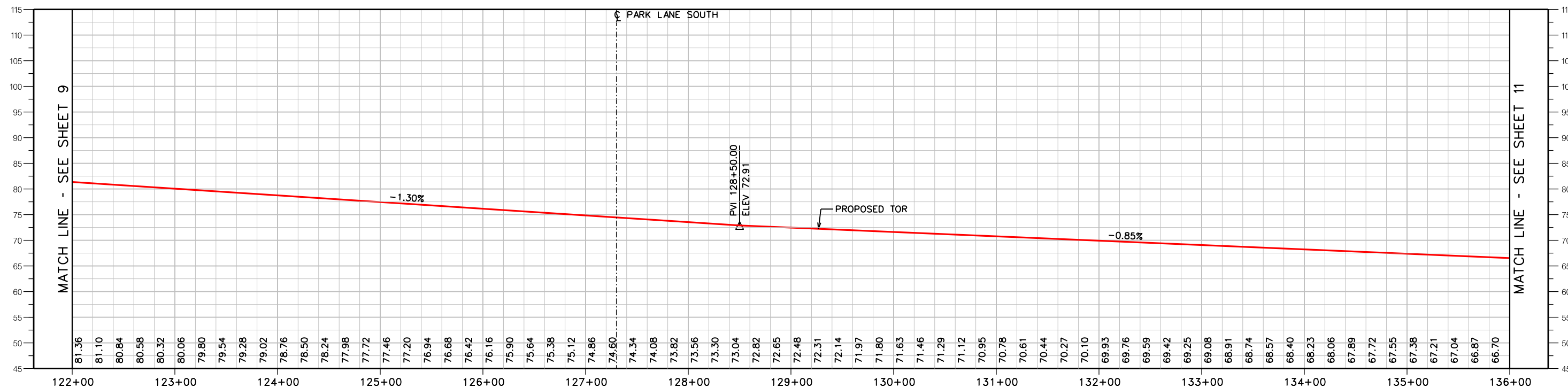
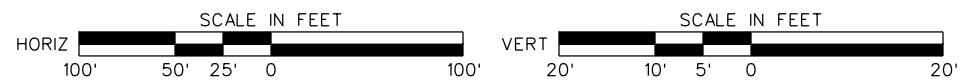
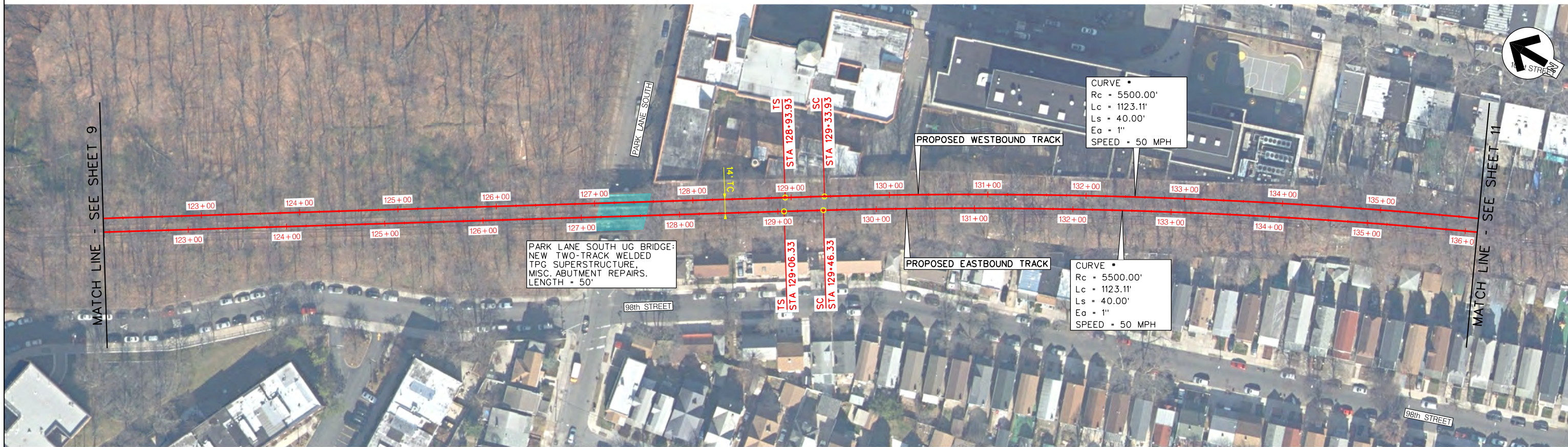
Systra Engineering, Inc.
520 8th Avenue, Suite 2100
New York, NY 10018

CONCEPTUAL
NOT FOR
CONSTRUCTION

LONG ISLAND RAIL ROAD
RESTORATION OF THE ROCKAWAY BEACH BRANCH
NYCT ALIGNMENT LAYOUT
SHEET 9 OF 16

SCALE: AS NOTED

DATE: OCTOBER 2017



LEGEND:

- - - EXISTING TRACK
- PROPOSED TRACK
- EXISTING GROUND
- UG BRIDGE
- VIADUCT
- TUNNEL WALL/RETAINING WALL

SYSTRA

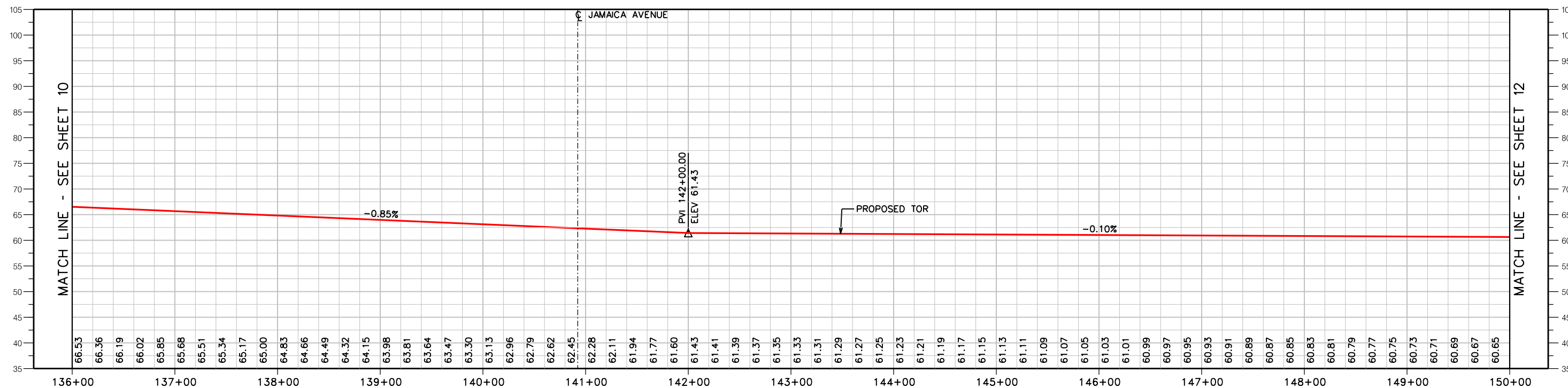
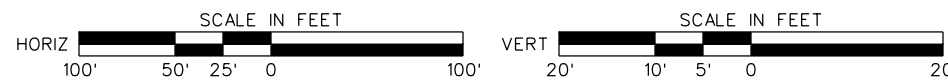
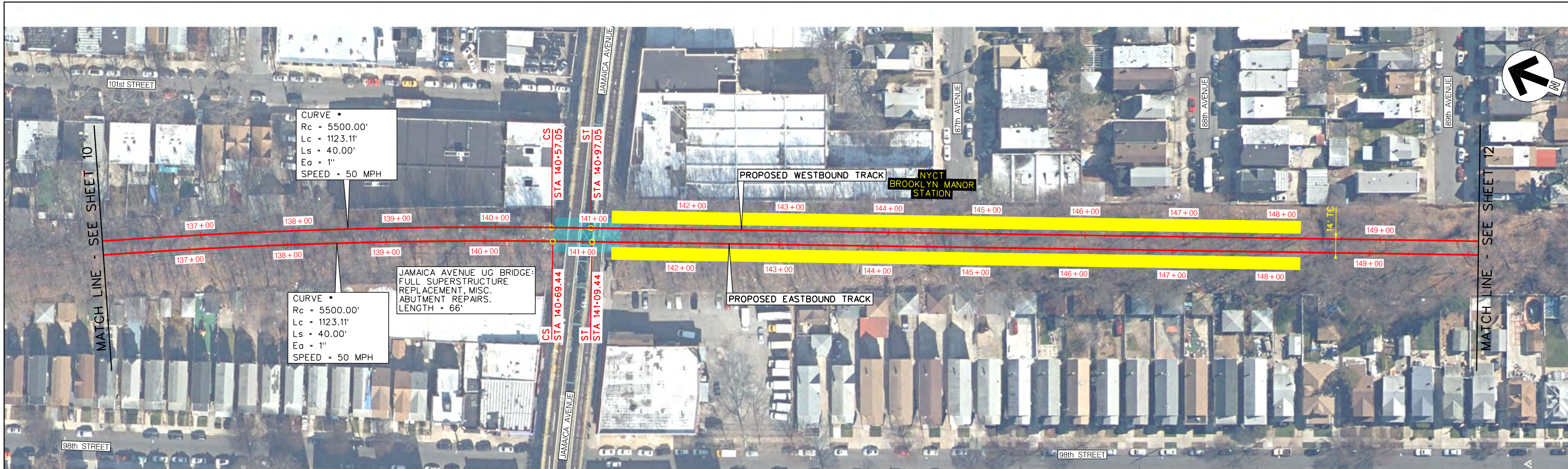
Systra Engineering, Inc.
520 8th Avenue, Suite 2100
New York, NY 10018

CONCEPTUAL
NOT FOR
CONSTRUCTION

LONG ISLAND RAIL ROAD
RESTORATION OF THE ROCKAWAY BEACH BRANCH
NYCT ALIGNMENT LAYOUT
SHEET 10 OF 16

SCALE: AS NOTED

DATE: OCTOBER 2017



LEGEND:

- - - EXISTING TRACK
- PROPOSED TRACK
- EXISTING GROUND
- UG BRIDGE
- VIADUCT
- TUNNEL WALL/
RETAINING WALL

SYSTRA

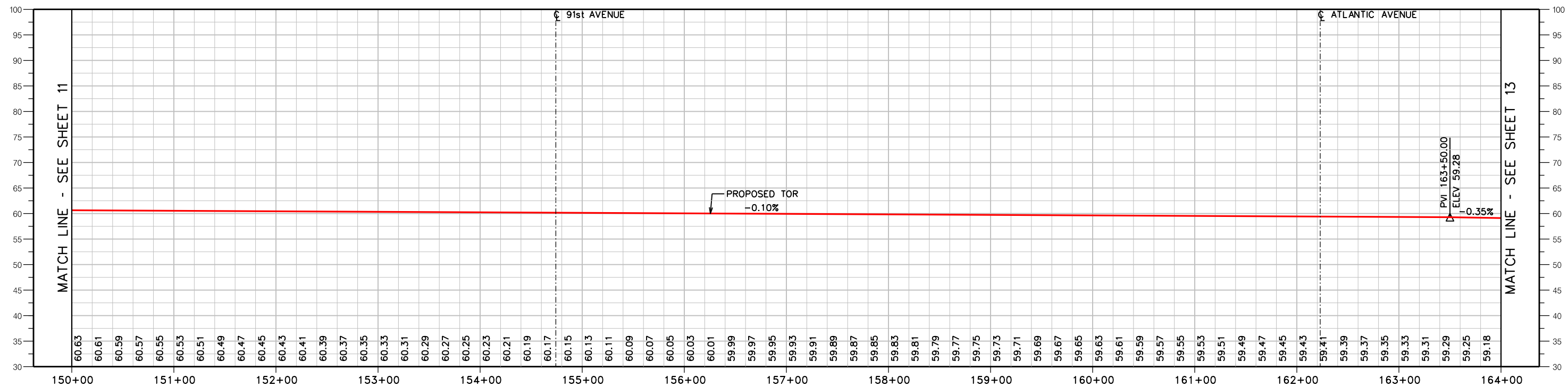
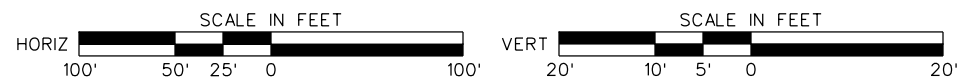
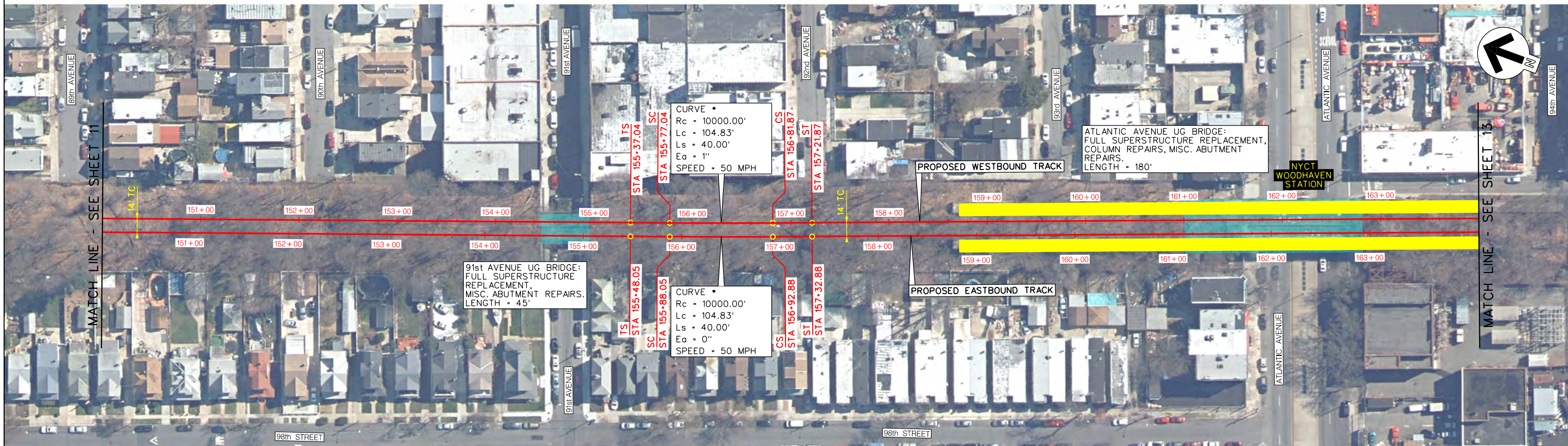
Systra Engineering, Inc.
 520 8th Avenue, Suite 2100
 New York, NY 10018

CONCEPTUAL
 NOT FOR
 CONSTRUCTION

LONG ISLAND RAIL ROAD
 RESTORATION OF THE ROCKAWAY BEACH BRANCH
 NYCT ALIGNMENT LAYOUT
 SHEET 11 OF 16

SCALE: AS NOTED

DATE: OCTOBER 2017



LEGEND:

- - - EXISTING TRACK
- PROPOSED TRACK
- EXISTING GROUND
- UG BRIDGE
- VIADUCT
- TUNNEL WALL / RETAINING WALL



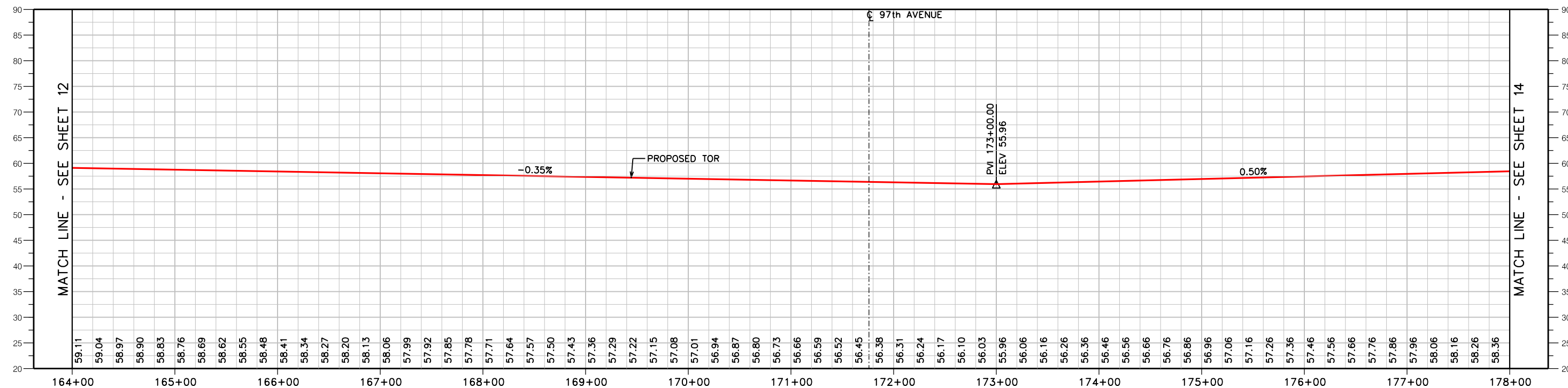
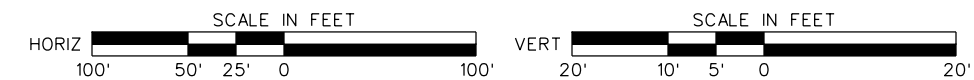
Systra Engineering, Inc.
520 8th Avenue, Suite 2100
New York, NY 10018

CONCEPTUAL
NOT FOR
CONSTRUCTION

LONG ISLAND RAIL ROAD
RESTORATION OF THE ROCKAWAY BEACH BRANCH
NYCT ALIGNMENT LAYOUT
SHEET 12 OF 16

SCALE: AS NOTED

DATE: OCTOBER 2017



LEGEND:

- - - EXISTING TRACK
- PROPOSED TRACK
- EXISTING GROUND
- UG BRIDGE
- VIADUCT
- TUNNEL WALL/RETAINING WALL

SYSTRA

Systra Engineering, Inc.
520 8th Avenue, Suite 2100
New York, NY 10018

CONCEPTUAL
NOT FOR
CONSTRUCTION

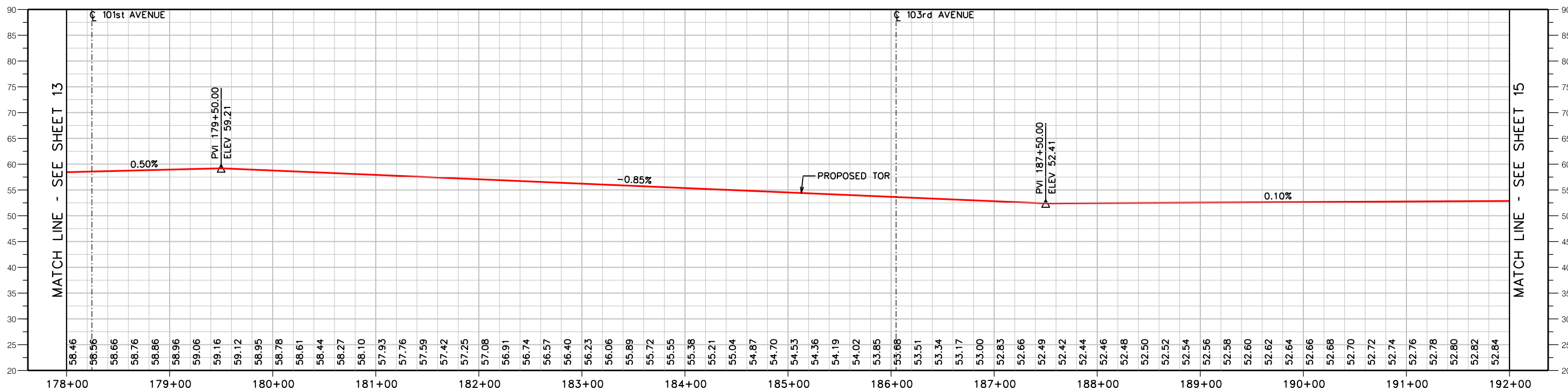
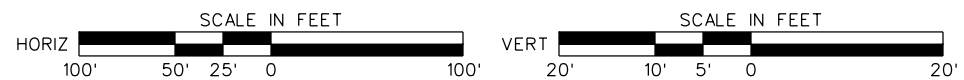
LONG ISLAND RAIL ROAD
RESTORATION OF THE ROCKAWAY BEACH BRANCH
NYCT ALIGNMENT LAYOUT
SHEET 13 OF 16

SCALE: AS NOTED

DATE: OCTOBER 2017



FULL REPLACEMENT OF VIADUCT SUPERSTRUCTURE, REPAIR/REPLACE SUBSTRUCTURES AS REQUIRED.



LEGEND:

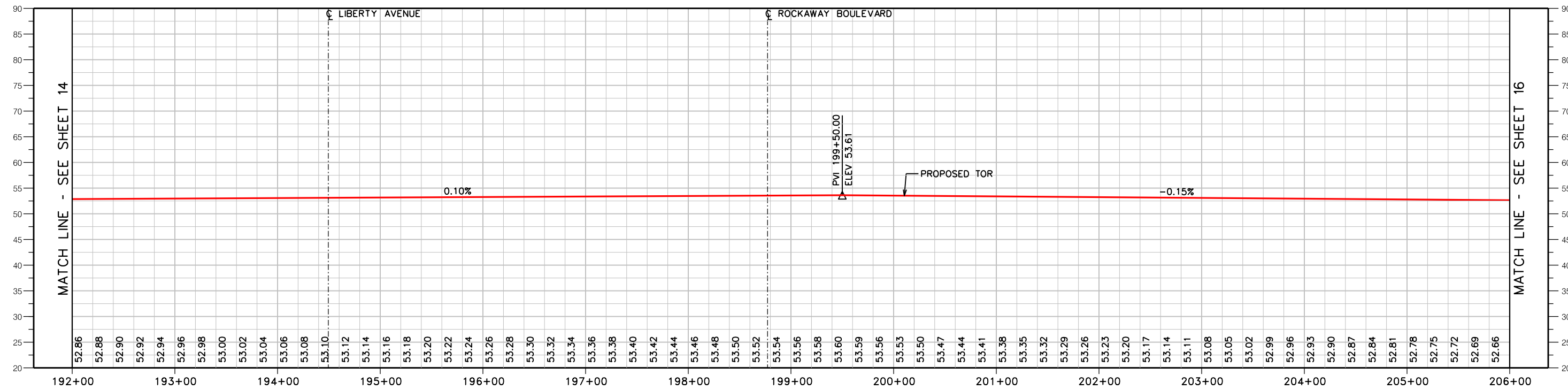
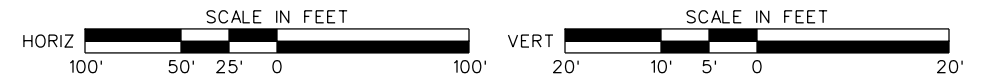
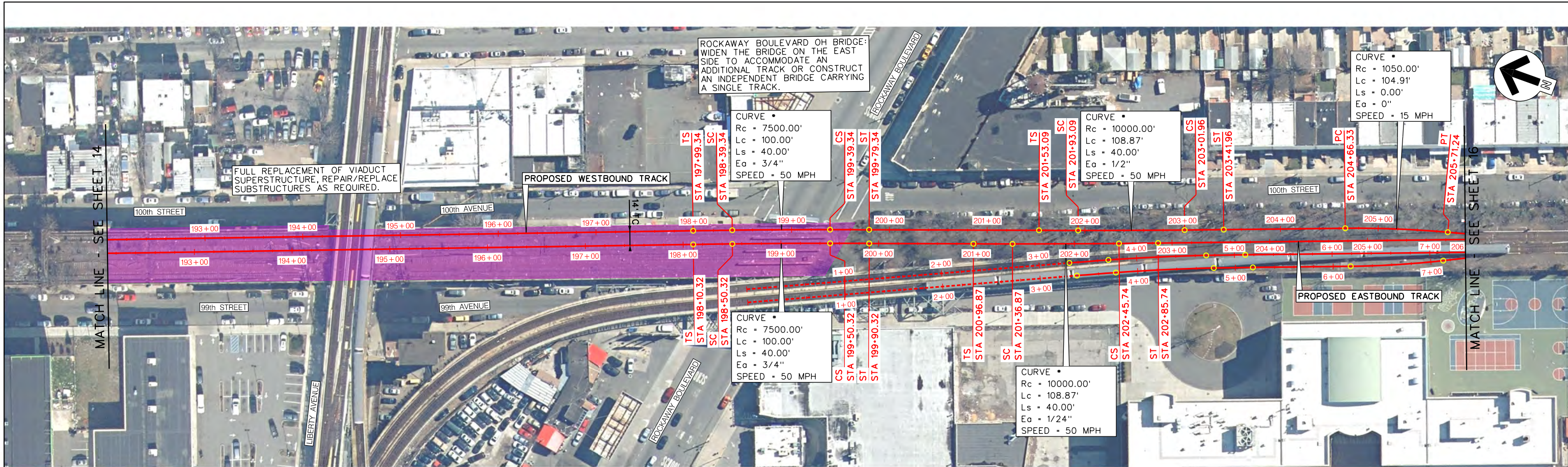
- - - EXISTING TRACK
- PROPOSED TRACK
- EXISTING GROUND
- UG BRIDGE
- VIADUCT
- TUNNEL WALL/RETAINING WALL

SYSTRA
 Systra Engineering, Inc.
 520 8th Avenue, Suite 2100
 New York, NY 10018

CONCEPTUAL
 NOT FOR
 CONSTRUCTION

LONG ISLAND RAIL ROAD
 RESTORATION OF THE ROCKAWAY BEACH BRANCH
 NYCT ALIGNMENT LAYOUT
 SHEET 14 OF 16

SCALE: AS NOTED
 DATE: OCTOBER 2017



LEGEND:

- - - EXISTING TRACK
- PROPOSED TRACK
- EXISTING GROUND
- UG BRIDGE
- VIADUCT
- TUNNEL WALL/
RETAINING WALL

SYSTRA

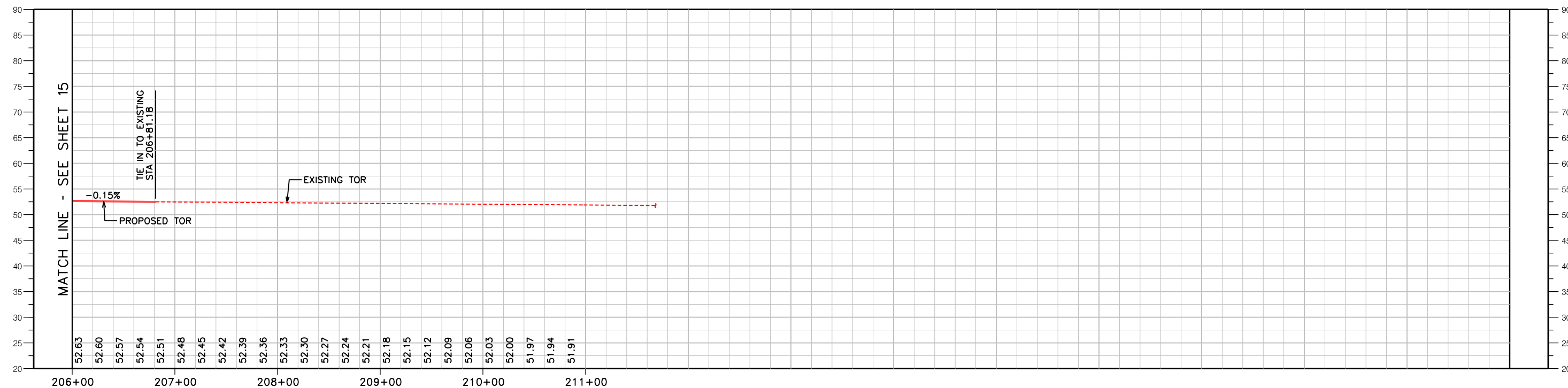
Systra Engineering, Inc.
520 8th Avenue, Suite 2100
New York, NY 10018

CONCEPTUAL
NOT FOR
CONSTRUCTION

LONG ISLAND RAIL ROAD
RESTORATION OF THE ROCKAWAY BEACH BRANCH
NYCT ALIGNMENT LAYOUT
SHEET 15 OF 16

SCALE: AS NOTED

DATE: OCTOBER 2017



LEGEND:

- - - EXISTING TRACK
- PROPOSED TRACK
- EXISTING GROUND
- UG BRIDGE
- VIADUCT
- TUNNEL WALL/RETAINING WALL

SYSTRA

Systra Engineering, Inc.
520 8th Avenue, Suite 2100
New York, NY 10018

CONCEPTUAL
NOT FOR
CONSTRUCTION

LONG ISLAND RAIL ROAD
RESTORATION OF THE ROCKAWAY BEACH BRANCH
NYCT ALIGNMENT LAYOUT
SHEET 16 OF 16

SCALE: AS NOTED

DATE: OCTOBER 2017